



# Ozark Bull Sale

*March 4, 2017*

**120 Red Angus and Red Hybrid Bulls**

Green Springs Bull Development Center • Nevada, Missouri • 1 PM CST



# Index

General Information .....	Page 1
Letter from the Ludvigson's .....	Page 2
LN Cattle Company Elite Nucleus Herd .....	Page 3
Ludvigson Performance Group .....	Page 4
Superior and DV Auction Instructions .....	Page 5
\$Profitability Index Explanations.....	Page 6
Red Angus Premier Herd Bull Prospects .....	Pages 7
Red Angus Two Year Old Herd Bulls and Range Bulls .....	Pages 14
Red Angus 18 Month Old Herd Bulls and Range Bulls .....	Pages 17
Red Angus Yearling Herd Bulls and Range Bulls .....	Pages 24
Sale Terms & Conditions .....	Inside back cover



## Sale Professionals

Auctioneer  
Charly Cummings, Yates Center, Kansas  
620-496-7108

## Publication Representatives

Harold Bertz, RAAA (816)661-2289  
Beth Gaines, RAAA (785)307-3226  
Don Birk, Special Assignment (417)860-8595  
Cole Owens, Superior Livestock Auction (541)519-4893  
Tim Lackey, The Stock Exchange (660)676-2193  
Jordan Hunter, Special Assignment (417)224-6296

## Sight UnSeen Professionals

For those of you unable to attend the sale these professional cattlemen will be able to assist you in evaluating the 126 Red Angus breeding stock available in the sale and will help to determine which animals will fit your program the best. Please do not hesitate to contact any of these individuals with any questions or requests.

Ryan Ludvigson, Ludvigson Stock Farms (406)534-4263 home  
(515)450-3124 mobile  
  
Park Ludvigson, Ludvigson Stock Farms (712)384-2200 office  
(712)384-2392 home  
(712)229-3431 mobile  
  
Kellen Ludvigson (515)314-2883 mobile  
Ludvigson Stock Farms Marketing Specialist  
  
Clint Berry, Superior Livestock Auction (417)844-1009

## Schedule

### Friday, March 3rd

Cattle Available for Viewing • All Day  
Green Springs Bull Sale Center, Nevada, Missouri

“Watering Hole” Hospitality Hour • 5:30 PM  
Green Springs Bull Sale Center

Cattlemen's Seminar • 6:00 PM • Green Springs Bull Sale Center  
Beth Gaines, Red Angus Association of America  
Clint Berry, Superior Livestock Auction

“Beef in the Ozarks” Dinner • 7:00 PM  
Green Springs Bull Sale Center

### Saturday, March 4th

Coffee and Donuts • 8 AM  
Green Springs Bull Sale Center, Nevada, Missouri

“Show Me” Lunch • 11:30 AM  
Green Springs Bull Sale Center, Nevada, Missouri

Ozark Sale • 1 PM • Green Springs Bull Sale Center, Nevada, Missouri

## RETAINED INTEREST

**We are selling a 1/2 interest and full possession in every bull in the sale. This gives us the right to collect semen at our expense and at the convenience of the new owner. The new owner receives the full salvage value of the bull. If anyone has any questions in regard to this please feel free to contact us.**

**Videos will be available on both sites as well as at [ludvigsonstockfarms.com](http://ludvigsonstockfarms.com)**



**Ryan Ludvigson**  
Billings, Montana  
(406)534-4263 office • (515)450-3124  
[rl\\_ludvigson@hotmail.com](mailto:rl_ludvigson@hotmail.com)



**Park Ludvigson**  
Cushing, Iowa  
(712)384-2200 office • (712)229-3431  
[parkludvigson@hotmail.com](mailto:parkludvigson@hotmail.com)



**Kellen Ludvigson**  
Cushing, Iowa  
(515)314-2883 mobile  
[kellen@orionbeefgroup.com](mailto:kellen@orionbeefgroup.com)

# Ozark Bull Sale

## March 4, 2017

### 120 Red Angus and Red Hybred Bulls

Green Springs Bull Development Center • Nevada, Missouri • 1 PM CST

**1** **LSF SRR FREEDOM 6207D**  
 BD: 2/19/16 TATTOO: 6207D REG#: 3532027 HERD: SRR CAT: 100% AR

**TOP \$ ELIGIBLE**  
 BUF CRK LANCER R017  
 BUF CRK THE RIGHT KIND U199  
 BUF CRK SHOSHONE R353

**5L INDEPENDENCE 560-298Y**  
 TC STOCKMAN 365  
 5L BLACK ADINA 525-560  
 5L ADINA 293-525  
 BECKTON NEBULA M045  
 BECKTON NEBULA P P707  
 BECKTON LANA M809 EP

**BROWN MS P707 X7539**  
 G A R RETAIL PRODUCT  
 BROWN MS RETAIL PRODUCT U772  
 BROWN MS VACATION N7921

ACT BW	\$PROFIT
88	Top 18%
WW	\$RANCH
764	Top 58%
PROJ YW	\$FEEDER
1294	Top 12%
	DISP
	***

HERD	GRID	CED	BW	WW	YW	MILK	ME	HPG	CEM	STAY	MARB	YG	CW	REA	BFAT
191	55	13	-2.8	73	126	20	-1	13	9	16	0.89	0.05	41	0.23	0

— Expected Progeny Differences (EPDs) —

**Top \$ Angus** is a premium program available through the RAAA to identify sires and calves that rank in the top 25% of the breed for the Gridmaster Index. There is a large pool of feedlot owners that have signed up to source these cattle for their operations.

**EARLY INSPECTIONS:** All 120 highly culled and selected Red Angus and Red Hybred bulls and females are available for viewing at any time. The bulls and females will be put into place at the sale site on Friday prior to the sale. For anyone wanting to see the bulls prior to Friday please contact us.

**EARLY ARRIVALS:** We welcome everyone to arrive the day before the sale to study the bulls selling as well as our program. Also it will give us time to discuss your program goals and objectives.

**LODGING/ACCOMODATIONS:** There are several lodging options in the area and following is a list of our suggestions:

Sale Headquarters  
 Country Inn and Suites - Nevada, Missouri (417)667-9292  
 Ask for Ludvigson rate - need to make reservations by October 5th.

Other Hotels  
 Holiday Inn Express - Nevada, Missouri (417)283-6177

Super 8 Motel - Nevada, Missouri (417)667-8888

**AIRLINES:** Kansas City International Airport is served by all major airlines.

**HOSPITALITY/FOOD:** Sale hospitality will be provided the day of the sale including coffee and rolls in the morning and lunch served at noon.

**SALE LOCATION:** The sale is located at the Green Springs Bull Sale Center close to Nevada, Missouri and the address is 24327 E Old Town Rd, Nevada, MO 64772.

**TRUCKING:** We provide for all trucking of animals after the sale, unless the buyer wishes to pick animals up after the sale. All bulls selling in this event for \$4,000 or more or any invoices with totals of \$10,000 or more will be delivered for free to the nearest central points. All other bulls will be delivered at cost (\$0.30/mile) to the nearest central points. We will begin delivering bulls after the sale.

**SALE ORDER:** Cattle sell in catalog order for your convenience.

#### Herd of Origin

Individual Performance

**HERD GRID CED** Herdbuilder Index – ranks bulls on the cow herd building traits  
 Gridmaster Index – ranks bulls on the feedlot and carcass traits  
**CED** Calving Ease Direct-percent difference of calves unassisted at birth  
**BW** Birth Weight  
**WW** Weaning Weight  
**YW** Yearling Weight  
**MILK** Milk  
**TM** Total Maternal  
**ME** Mature Cow Maintenance Energy Requirements  
**HPG** Heifer Pregnancy-percent difference daughters conceiving  
**CETM** Calving Ease Total Maternal-percent of difference of daughters calving unassisted  
**STAY** Stayability-percent difference of daughters staying in a herd until six years of age.  
**MARB** Marbling  
**REA** Rib Eye Area  
**DISP** \*\*\*\* Extremely Quiet \*\*\* Very Quiet  
 \*\*\* Average \*\* Below Average \* Much Below Average

**\$PROFIT - \$RANCH - \$FEEDER**  
 All three indexes are expressed in terms of % breed rank with the lower number being better. Those bulls with a "0" are at the very top of the breed.

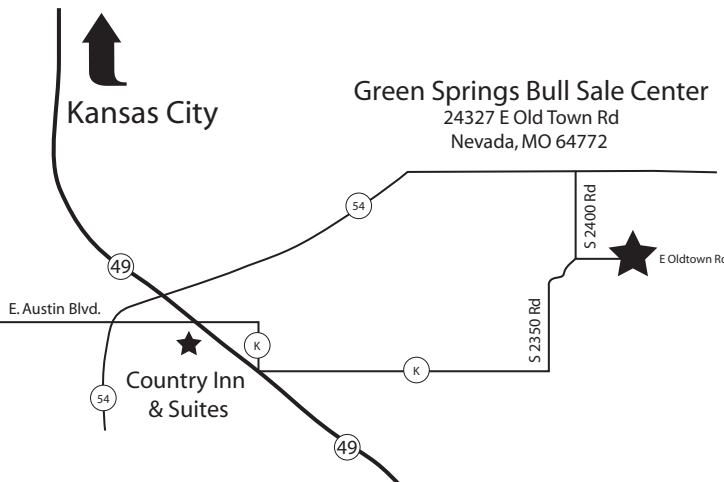
**GeneSeek Genomic Profiler™ (GGP-LD)**  
 the EPD's have been enhanced to have increased accuracy.

**SIGHT UNSEEN PURCHASES (SUS):** We encourage everyone to attend the sale but we understand that not everyone can be with us sale day. We offer a 100% Satisfaction Guaranteed Sight Unseen Purchase program through our seasoned and professional marketing representatives. Please feel free to contact any of our representatives on the inside front cover for your buying needs.

**FERTILITY:** All of the bulls are guaranteed breeders. We encourage that all bulls be fertility tested prior to turn out.

**Veterinarian:**  
 Dr Eric Anderson, 54 Vet Clinic, 13615 E 54 Hwy, Nevada, MO 64772

**GENETIC TESTING:** All necessary genetic testing has been carried out as prescribed by the Red Angus Association of America. No tested carriers are selling in this event.





Welcome to Ludvigson Stock Farms Fourth Spring Edition Ozark Bull Sale. The bulls again this year have been fed and developed at the Green Springs Bull Development Center near Nevada, Missouri. We made this change to be able to feed efficiency test the bulls using the patented Grow Safe feeding system. We have made a commitment to our customers to select and provide the most efficient Red Angus bulls in the breed. We know this is a long process but feel it is necessary to provide the genetics that will be most profitable for our customers.

The Red Angus breed is extremely “hot” right now and we as stakeholders both seed stock and commercial are experiencing a great demand for our product. Red Angus cattle have always been known as “blue collar” workers without a lot of “flash.” The cattle have been known for good dispositions, calving ease, adaptability and keeping operations in the black. These convenience traits are more in demand today than at any time in history and will continue to make this breed grow at an exponential pace.

The group of bulls that we are offering in this event, excel for calving ease, growth, maternal and carcass. The leading sires and sire groups in the Red Angus breed are very well represented in this offering. We along with our cooperators have always placed a high level of emphasis on structure and soundness. We realize our customers our making a considerable investment and the bulls and females need to have the necessary soundness to hold up to difficult environments and produce longevity in the herd. The cattle in this sale represent some of the highest quality Red Angus genetics offered anywhere in the country.

As we stated above the bulls have been developed at the Green Springs Bull Development Center near Nevada, Missouri. The bulls have been fed a high roughage ration that allows the bulls to express their genetic potential and at the same time provide an excellent condition for turnout. The bulls have been running in 10-40 acre fescue pastures during the development period for added exercise and adaptability. The bulls are in excellent shape and will not miss a beat when transitioning to your operation at home.

We are experiencing new times in the cattle business even though prices are down from last year these are still some of the best times in the industry. Cattle will be “sorted” more now and “quality” cattle will bring the premium over average or plain cattle. The industry continues to move towards high marbling, high quality cattle. In this offering you will find some of the highest quality cattle to sell anywhere this year.

If we can be of assistance to you in making reservations or travel plans, please feel free to contact us. The sale headquarters will be the Country Inn and Suites located conveniently right off of Interstate 49 in Nevada, Missouri. We will host a Cattlemen’s Seminar, hospitality hour and dinner the night before the sale at the Gobblers Roost next to the Green Springs Bull Sale Facility and we would like to invite everyone to join us. We look forward to seeing you on March 3rd and 4th.

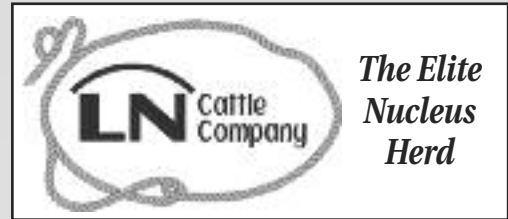
*Ryan Ludvigson*



**Ryan Ludvigson**  
Billings, Montana  
(406)534-4263 office • (515)450-3124 mobile  
[rl\\_ludvigson@hotmail.com](mailto:rl_ludvigson@hotmail.com)

**Park Ludvigson**  
Cushing, Iowa  
(712)384-2200 office • (712)229-3431 mobile  
[parkludvigson@hotmail.com](mailto:parkludvigson@hotmail.com)





**Our Program**

Ludvigson Stock Farms is a family operation established in 1954. Our roots are based in the commercial cow calf and cattle feeding sectors. We understand what is needed to be successful in these areas and it has shaped our breeding philosophies in the genetics that we produce.



**Our Ranches**

The Elite Nucleus herd runs on our "home" ranch located 10 miles south of Lewistown, Montana in the Snowy Mountains. We also have an advanced genetics center located in Iowa where our parents began farming over 50 years ago. In addition to these ranches we have established regional ranch centers in Mandan, North Dakota and Raton, New Mexico.

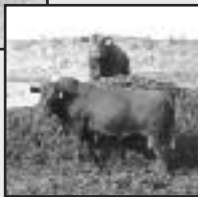
**Our Genetics**

We have established a breeding philosophy that incorporates optimizing multiple traits without over emphasizing any single trait. Our herd sires Expectation and Packer are perfect examples that balance all traits and produce least cost cattle with exceptional phenotypes. Our next generation of herd sires such as Takeover, Nextpection, Night Calver and Saga continue this tradition and headline the bulls that we will be selling in this event.



**Our Bull and Heifer Development**

We develop our bulls and females at various development centers throughout the United States. All the bulls are fed a highroughage ration designed to produce a 3.0 lb ADG with 0.2 of an inch back fat. The replacement females are fed a carrying ration and we have maintained over an 80% first service AI conception rate on our females. The cattle are developed to adapt to any environment and thrive.



**Our Team**

The LSF team includes not only our family but our managers, cooperators and customers. It takes a team to remain competitive in the industry today and we value the input from all of our team members.

**Our Key Members:**

- Ryan Ludvigson – is our main marketing representative and oversees the cowherd and development operations in Montana.
- Park Ludvigson – is our main breeding specialist, managing our embryo collection and transfer program as well as our embryo export program.
- Steve Newberry – our chief business strategist that oversees LN Cattle Company operations.
- Rodger Reitman – Our main reproductive specialist and development manager – numerous years experience with seed stock and commercial herds.
- Kraig Sweeney – Our ranch manager that oversees the Elite Nucleus Herd in Lewistown. Well qualified with years of experience in seedstock and commercial cow calf production.

**Our Customers**

Our customers play an integral and ongoing part in our breeding program. It would be impossible for us to remain competitive without constant input by our customers. Our customer's environments range from the High Desert to the High Plains and from the Midwest to the Rio Grande. Adaptability of our genetics has been the key to why our customers come back year after year.

**\$Profitability**

Again this year, every bull will have a \$Profit Index. This index ranks cattle on their ability to return "profit" to the beef industry. We believe that this index will simplify the selection process for our customers and move their operations in the right direction faster in this competitive market. Please contact us to visit about this ground breaking index as well as to receive materials that explain the process in more detail.

**LN Cattle Company**



*The Ludvigsons*



*The Newberrys*

**Partners in Progress**

In the summer of 2013, Steve Newberry and Ryan Ludvigson met and discussed the state of the beef industry and out of these discussions a partnership was formed to meet the increasing demand for Red Angus influenced genetics. Like minded and extremely progressive, the Ludvigson and Newberry families are committed to providing the

beef industry with the most cutting edge genetics as well as industry leading customer service. In addition to providing some of the top genetics to the industry look for this partnership to introduce some of the most dynamic customer service programs that the industry has ever seen.

## Butcher Red Angus (BRA)

Butcher Red Angus is owned and operated by Ben and Brianna Butcher in Holstein, Iowa. Ben joined our Red Angus family in 2007 by purchasing his first Red Angus females from us during our annual Focus on Females Sale. Ben interned with us during the Spring of 2008 and had the opportunity to participate in all aspects of our operation and was instrumental in our calving operations as well as the development of our bulls. The Butcher's also feed a number of cattle each year and have been competitive buyers of high quality Red Angus feeder cattle in Montana and the upper plains. They see first hand the benefits of how genetics can play a huge role in the profitability of each segment of the beef industry. Ben and Brianna have a very bright future in the livestock industry and we look forward to working with them for many years.

## Rhodes Red Angus (RHO)

Rhodes Red Angus is owned and operated by Darryl and Susan Rhodes in Wichita, Kansas. Darryl and Susan have been making quite a name for themselves by acquiring some of the best bulls and females over the last few years. We became acquainted with Darryl and Susan when they purchased LSF Night Calver 9921W and LSF Combo Pack 9942W in our Spring 2010 Herdbuilder Sale. These two featured herd sires have not only left an impact on their herd but also the breed. They have had a "keen" eye for selecting cattle that perform at a very high level. The Rhodes are turning into one of the "hot" new operations in the breed and fit in very well with our philosophies and expectations.

## D&D Cattle Company (DDC)

D & D Cattle Company is owned and operated by the Dan Braesch family from Herman, Nebraska. The Braesch's have been customers of ours for many years and built a strong foundation of females through selections from our Focus on Females sales that we held at our home farm in Iowa for many years. They have utilized AI for a very long time and have "stacked" their pedigrees with some of the best sires that the Red Angus breed has to offer. The Braesch's are well known for producing high performance cattle that have the "look." This operation is one of the new "hot" breeders in the country and have a tremendous amount of genetic potential to offer the breed. Look for this operation to produce many Ozark herd bulls for us.

## Henderson Red Angus (H2R)

Henderson Red Angus is owned and operated by Frank and Karen Henderson along with their son and daughter in law, Toby and Amy as well as their children, Raynee, Kaycee and Levi in Springtown, Texas. The Henderson's are relatively new Red Angus breeders but have been quietly putting together one of the best herds of Red Angus cows in Texas. Selecting several top females from the historic R.A. Brown Dispersal sale and doubling down with these purchases by utilizing both A.I. and embryo transfer, the Henderson's are fast becoming one of the "hot" young operations in the country. Look for this operation to offer some of the top genetics in the Ozark Sale for years to come.

## Dubas Red Angus (DRA)

Dubas Red Angus is located in Fullerton, Nebraska and is owned and operated by Jarrid Dubas and assisted by Whitney Engel. The Dubas Family has been involved in the Angus business for years but Jarrid Dubas ventured out on his own to start with Red Angus 7 years ago. Dubas has focused on breeding moderate, maternal cattle that are highly efficient. Dubas has not spared any expense investing in some of the top sires from LSF and this is definitely one of the programs on the move in the Red Angus breed.

## Idle Wind Farm (IWF)

Idle Wind Farm is owned and operated by Michael and Victoria Dierking and their family. It is located in the rolling hills of the Northern Ozarks in East Central Missouri near Union. The Dierking's have raised

cattle nearly 4 decades focusing primarily with an Angus commercial cow calf operation. In 2007 they acquired their first Red Angus cattle and after that began developing the Red Angus genetics that would perform in the Missouri climate as well as thrive on the tall fescue pastures that dominate the landscape. They employ AI and ET to select some of the best breeding pieces in the breed.

## Johnson Family Cattle Company (JFC)

Johnson Family Cattle Company is located in Shawano, WI and is owned/operated by Brad & Lindsay Johnson. The JFCC program is designed to produce functional, performance cattle that are the "cattlemen's kind". Having both been in the beef industry all their lives, the Johnsons started in the Red Angus breed in 2006. They continue to develop their herd with an aggressive A.I. and E.T. program, strict culling and an unwavering pursuit of the ideal beef animal.

## Kunkel Farms (KRA)

Kunkel Farms owned and operated by Dale and Diane Kunkel from Neosho, Missouri. The Kunkel's are 4th generation cattlemen and have been rooted in the commercial cow calf business for many years. The Kunkel's have been supplying females for the last 6 years to the Missouri Show-Me-Select Sales so they know the value of good commercial breeding stock. In addition to this aspect, the Kunkel's have been very active in participating in carcass contests in Missouri. The Kunkel's have embraced the use of AI and have purchased top notch herd sires to constantly improve their genetic inputs. Their are several young family members that have an interest in the cattle business it looks like the Kunkel's traditions will be carried on for a very long time.

## Whitley Red Angus (WRA)

Whitley Red Angus is a seventh generation family operation owned and operated by Henry, Jane, Tim, Jim and Kathy Whitley. The operation is located in North Alabama near Horton. This historic and well known Red Angus operation has been producing Red Angus Seedstock for 50 years. The true testament of Stayability in the seedstock business. The focus of the Whitley operation has been to develop a strong maternal herd that will grow and prosper on fescue pasture. The herd emphasis has been for structurally sound cattle with great dispositions.

## Hornung Red Angus (HOR)

Hornung Red Angus is located in Cottage Grove, Wisconsin. Established in 2002, Hornung Red Angus is a family owned operation, managed by Andy and Alisa Hornung. Their passion for Red Angus started out as a 4-H project, and continued to grow over the years. They grew up showing livestock at local shows, county and state fairs. Their passion of working with cattle continued to grow, which led to multiple job opportunities working on cow calf operations. Today, their main focus is on building a top herd of Red Angus cattle by utilizing extensive AI and embryo transfer. They are looking forward to producing some of the best performance cattle in the breed and are excited to be working with the Ludvigson performance group.

## Key Red Angus (JKK)

Key Red Angus is owned and operated by Jerrell and Holly Key along with their children Maggie, Nicholas and Colton. Key Red Angus is headquartered in the Texas Panhandle at Gruver. Even though their operation is rooted in commercial cattle production, they made the move in 2015 to purchase seedstock females from the LN Cattle Company Nucleus herd. Running a commercial cow calf herd has had a tremendous influence on the seedstock that they have purchased and produced. The Key cattle are moderate, structurally correct cattle that excel for longevity and maternal traits while being superior for feed efficiency and carcass traits. Look for this operation to be leaders in our performance group for years.

# HOW TO PARTICIPATE AS AN ABSENTEE BUYER

We have made preparations to bid and buy livestock through Superior Productions' "Call or Click-To-Bid" service for those unable to attend in person on sale day. Please note that all of the lots in the sale will also be available for viewing online prior to sale day at [www.superiorlivestock.com](http://www.superiorlivestock.com).

## HERE'S HOW IT WORKS

**Turn in Bids Over the Phone.** This is our traditional method of buying livestock and is the suggested process for anyone who does not have consistent, high-speed internet. To get started simply go online to [www.superiorlivestock.com](http://www.superiorlivestock.com) and click on the tab titled "Register for a Buyer Number". Select the registration form for Superior Productions and print the registration form. Fill it out and fax it in to Superior Productions at (817) 378-3380 with a signature on it, or scan and email the form to [info@superiorauction.com](mailto:info@superiorauction.com). You can also mail it in to the address provided on the form. Upon receipt of this information Superior will call you with a buyer's number and the bid line phone number that you will use on sale day to place bids over the phone.

**Click-To-Bid.** This is Superior's online bidding platform for cattle buying. Please note that high speed internet is required – this is not for dial-up or satellite internet. Registration is free, but you must become a member of [www.superiorclicktobid.com](http://www.superiorclicktobid.com) to sign up. Becoming a member is easy – just go to the homepage of [www.superiorclicktobid.com](http://www.superiorclicktobid.com) and follow the out-lined steps to get started. Input your information and select a username and password. You will receive an e-mail confirming you are a member. From that point forward you just have to sign in and select the sale you would like to register for and once approved you will receive an e-mail or call confirming which sale you are now registered for.

**Viewing the Auction.** The sale will be broadcast via satellite on Dish Network channel 998. Please note that there is a delay if you are watching the auction on television so be sure to call in a couple lots ahead of the lot you are interested in bidding on. There are 2 places to view the sale broadcast live on the internet: [www.superiorlivestock.com](http://www.superiorlivestock.com) or [www.superiorclicktobid.com](http://www.superiorclicktobid.com). Just go to the home page of either website and select the auction. If you just want to watch the auction on your computer, smartphone or tablet go to [www.superiorlivestock.com](http://www.superiorlivestock.com), but if you want to bid over the computer you must go to [www.superiorclicktobid.com](http://www.superiorclicktobid.com). Remember you can call in to bid whether you watch on the TV or on the internet, but you must be a member of [www.superiorclicktobid.com](http://www.superiorclicktobid.com) to "click-to-bid". Your computer must have Flash Media Player installed for this website to view the auction. If you have any questions, please call the Superior Productions office at 800-431-4452.

**Buyers will be contacted by the ranch after the sale for payment and delivery details. IF YOU NEED ANY ASSISTANCE CALL SUPERIOR AT (800) 422-2117.**



**Can't make the sale?  
Watch it LIVE and bid in  
real-time on**

***DVAuction***  
***Broadcasting Real-Time Auctions***

**The Livestock Industry's Leading Online Marketplace!**

**[www.dvauction.com](http://www.dvauction.com)**

**For technical support, our full-time support team can always be reached at  
(402) 474-5557 | [support@dvauction.com](mailto:support@dvauction.com)**

**For general questions and bidder approval, contact Roxane Shipp at  
(402) 649-7946 | [roxane@dvauction.com](mailto:roxane@dvauction.com) or Kate Kraenow at  
(402) 649-8048 | [kate@dvauction.com](mailto:kate@dvauction.com)**

# \$Profit™ - The Next Generation of Cattle Evaluation

## Why \$Profit helps:

Today, ranchers have too much data to study. With over 20 traits, buying the best bull has become really confusing. We have actual weights, adjusted weights, ratios, and then a host of EPD's. Every bull is good on some traits and weak on others. The challenge is figuring out how each of those traits is going to impact your bottom line. We wish we truly knew which bull would make the most money from birth to slaughter, but most of the time, we end up guessing. Back in 2005, Leachman Cattle started working with the BIO group out of Canada. The goal was to come up with one number that sorted the bulls on their bottom line impact. Since 2005, Leachman's have calculated and selected for \$Profit. Through test herds, cooperated herds, and feedlot performance data -- \$Profit has been proven to work. The same technology used to calculate \$Profit is now being used by Verified Beef to estimate the value of feeder calves. Verified Beef will certify the Relative Market Value of your calves through their Reputation Feeder Calf program. This program uses \$Profit to predict the value of the calves in the feedlot and on the rail. This will allow you to earn premiums on genetically superior calves.

## How \$Profit works:

\$Profit assumes that the average commercial bull will have 100 progeny over its lifetime. Let's compare a \$10,000 \$Profit bull to \$6,000 \$Profit bull (the average 2008 born Angus bull). The predicted difference between the bulls is \$4,000 or about \$40 per calf. The model assumes that you keep 30% of your heifers and that you retain ownership on the remainder and sell the finished animals on a grid. We realize that many don't retain ownership, but with the Reputation Feeder Calf program, you can get paid and sell at weaning. Feedlots have already proven their willingness to pay premiums for superior \$Profit calves.

## What traits are included in \$Profit:

\$Profit includes nearly every trait that impacts profitability. The effect of most traits on profit is fairly simple to understand. Here is the list of what is included:

### Revenue Traits

- Calving ease = more calves
- Weaning & yearling EPD = more weight
- Fertility (days to conception) = more weight & more calves
- Carcass weight = worth more up to 1050 lbs.
- Marbling = valued based on the grid premiums
- Ribeye area = value as impacts yield grade
- % Retail Product = more yield

### Cost Traits

- Cow mature size = bigger eats more
- Cow intake = more intake costs more
- Feedlot feed efficiency = cost of gain

Some traits are not so easily characterized as more is better for \$Profit. Milk, for example, is a good thing until you get too much. In the \$Profit model, each pound of milk EPD over +25 has a more negative effect on fertility than it has a positive effect on weaning weight. There are a few traits not yet included in \$Profit: longevity, structure, and disposition. These traits are important but difficult to express in dollars.

Index selection has been proven to work in chickens, pigs, and dairy cows. There is little doubt that it can accelerate the rate of genetic improvement in beef cattle as well. That is why we have decided to provide \$Profit to our bull customers.

The technical team at BIO consists of Dr. Steve Miller, Dr. Peter Sullivan, and independent consultant, Brian Pogue. Dr. Miller helped design the \$Profit simulation model. Dr. Peter Sullivan calculates all of the underlying EPD's for the Leachman program. Each month, Dr. Sullivan analyzes the database and updates our \$Profit predictions. Brian Pogue works to ensure data integrity and model accuracy. This great team excels at generating the \$Profit index exclusively for Leachman Cattle of Colorado.

BIO is a company with a mandate for genetic improvement. Their science is leading edge in a number of different areas. BIO has estimated Across Breed Comparison EPD's on commercial and seedstock cattle in Canada since 1988. Economic simulation models have been used to generate indexes since 1996. BIO works in conjunction with the Centre for Genetic Improvement of Livestock (CGIL) at the University of Guelph in the development of new technologies for beef cattle improvement. For further information on BIO or CGIL visit their websites: [www.biobeef.com](http://www.biobeef.com) and [www.CGIL.uoguelph.ca](http://www.CGIL.uoguelph.ca)



LSF SRR FREEDOM 6207D

**1** LSF SRR FREEDOM 6207D  
 BD: 2/19/16 TATTOO: 6207D REG#: 3532027 HERD: SRR CAT: 100% AR

**TOP \$ ELIGIBLE**

BUF CRK LANCER R017  
 BUF CRK THE RIGHT KIND U199  
 BUF CRK SHOSHONE R353

**5L INDEPENDENCE 560-298Y**

TC STOCKMAN 365  
 5L BLACK ADINA 525-560  
 5L ADINA 293-525  
 BECKTON NEBULA M045  
 BECKTON NEBULA P P707  
 BECKTON LANA M809 EP

**BROWN MS P707 X7539**

G A R RETAIL PRODUCT  
 BROWN MS RETAIL PRODUCT U772  
 BROWN MS VACATION N7921

	<b>\$PROFIT</b>
<b>ACT BW</b>	<b>Top 18%</b>
<b>88</b>	<b>\$RANCH</b>
<b>WW</b>	<b>Top 58%</b>
<b>764</b>	<b>\$FEEDER</b>
<b>PROJ YW</b>	<b>Top 12%</b>
<b>1294</b>	<b>DISP</b>
	<b>***</b>

HERD	GRID	CED	BW	WW	YW	MILK	ME	HPG	CEM	STAY	MARB	YG	CW	REA	BFAT
191	55	13	-2.8	73	126	20	-1	13	9	16	0.89	0.05	41	0.23	0

Welcome to the annual Ludvigson Ozark Bull sale. We appreciate your interest in our program. The industry has been in a state of flux, but one thing that has remained constant in video sales across the country is that steers and heifers out of top genetics command top dollar. Our sale today is loaded from front to back with top genetics to enable your program to offer maximum profit. We start the sale with a fantastic son of one of the most exciting bulls in the breed, Independence. His 50K enhanced EPDs show him to completely explode the antagonisms between birth and growth with top 3% CED, 25% BW, 9% WW and 2% YW. Think of the quality of females this guy can put out with his top 16% HPG, 4% CEM, 2%ST, 1% HBI and the fact that his superior dam posts a 104.5 MPPA.



5L INDEPENDENCE 560-298Y

EPD Averages for Non-Parents Under Two Years of Age															
95 HB	49 GM	5 CED	-2.0 BW	59 WW	90 YW	21 MILK	1 ME	11 HPG	4 CEM	10 STAY	0.46 MARB	0.02 YG	22 CW	0.12 REA	0.00 BFAT



LSF SRR RELIANCE 6110D

**2** LSF SRR RELIANCE 6110D  
 BD: 1/26/16 TATTOO: 6110D REG#: 3532587 HERD: SRR CAT: 100% AR

**TOP \$ ELIGIBLE**

BUF CRK LANCER R017  
 BUF CRK THE RIGHT KIND U199  
 BUF CRK SHOSHONE R353

**5L INDEPENDENCE 560-298Y**

TC STOCKMAN 365  
 5L BLACK ADINA 525-560  
 5L ADINA 293-525  
 BECKTON NEBULA M045  
 BECKTON NEBULA P P707  
 BECKTON LANA M809 EP

**BROWN MS P707 Y7850**

BROWN REVELATION P7021  
 BROWN MS REVELATION T7635  
 BROWN MS JULIA M7788



ACT BW	\$PROFIT
87	Top 1%
WW	\$RANCH
753	Top 6%
PROJ YW	\$FEEDER
1212	Top 1%
	DISP
	***

HERD	GRID	CED	BW	WW	YW	MILK	ME	HPG	CEM	STAY	MARB	YG	CW	REA	BFAT
181	56	14	-4.6	69	116	21	3	13	9	14	1.08	-0.07	32	0.5	0

WOW! Check out the calving ease and growth spread that this long and deep made stud offers going from top 2% CED and 7% BW to 16% WW and 7% YW. You will be hard pressed to find another bull with that kind of spread. Maybe even more impressive than these numbers is the impressive end product merit that he offers. Whether your herd is needing help with carcass quality, yield, carcass weight or muscle he has you covered with his top 1% MB, 20% YG, 17% CW and 7% REA. With numbers like this it's easy to see how he ranks in the elite top 1% for GMI. Just imagine the phenomenal females that this guy can produce. They should be loaded with fertility, calving ease and be profit centers in the herd for years to come with his top 20% HPG, 4% CEM, 5% ST and 1% HBI.

**3** LSF DDC LIBERTY 61D  
 BD: 1/16/16 TATTOO: 61D REG#: 3539328 HERD: DDC CAT: 100% AR

**TOP \$ ELIGIBLE**

BUF CRK LANCER R017  
 BUF CRK THE RIGHT KIND U199  
 BUF CRK SHOSHONE R353

**5L INDEPENDENCE 560-298Y**

TC STOCKMAN 365  
 5L BLACK ADINA 525-560  
 5L ADINA 293-525  
 PIE ATLANTIC 2204  
 CREEK CASH 2R  
 RED CORNER  
 RED NORTHLINE PRINCESS 59L

**RED SOO LINE BANE BERRY 7251**

BASIN SENSATION 702E  
 RED SOO MS BANE BERRY 3193  
 RED SIX MILE BANE BERRY 362J



ACT BW	\$PROFIT
76	Top 4%
WW	\$RANCH
697	Top 26%
PROJ YW	\$FEEDER
1256	Top 3%
	DISP
	***

HERD	GRID	CED	BW	WW	YW	MILK	ME	HPG	CEM	STAY	MARB	YG	CW	REA	BFAT
130	51	11	-3.2	68	106	13	-6	14	5	10	0.42	-0.05	28	0.11	-0.03

Take a look at the huge actual spread from birth to growth that this rascal offers. How about going from a super low 92 birth weight ratio to and incredible 118 weaning ratio? Don't you wish all of your calves could achieve ratios like that? This exceptional performance spread is reflected in his outstanding calving ease and growth EPDs with rankings in the top 9% CED, 19% BW, 17% WW and 17% YW. If your inputs are starting to outrun your outputs this guy can help correct the situation with his outstanding ME that ranks in the top 8% of the breed. He can give your herd a big shot in the arm if you are lacking in the important traits of fertility and maternal calving ease with his top 31% CEM and 11% HPG. Notice that his dam offers elite outcross Canadian genetics.

EPD Averages for Non-Parents Under Two Years of Age															
95 HB	49 GM	5 CED	-2.0 BW	59 WW	90 YW	21 MILK	1 ME	11 HPG	4 CEM	10 STAY	0.46 MARB	0.02 YG	22 CW	0.12 REA	0.00 BFAT



LSF BRA SALVATION 6707D

**4** **LSF BRA SALVATION 6707D**  
 BD: 1/23/16 TATTOO: 6707D REG#: 3538978 HERD: BRA CAT: 100% AR

**TOP \$ ELIGIBLE**

BECKTON NEBULA M045  
 BECKTON NEBULA P P707  
 BECKTON LANA M809 EP  
 LJC MISSION STATEMENT P27  
 JYJ MS JOLENE W16  
 HXC JOLENE R548  
 BFCK CHEROKEE CNYN 4912  
 LCC CHEYENNE B221L  
 HXC 701G  
 LCHMN GOLD ROBBER 1909E  
 JEFFRIES PR PRIDE 1207-P315  
 LMAN PR PRIDE B1207

\$PROFIT
Top 1%
\$RANCH
Top 17%
\$FEEDER
Top 1%
DISP
***

ACT BW
85
WW
828
PROJ YW
1358



**LSF JLJ VICTORIA S405**

HERD	GRID	CED	BW	WW	YW	MILK	ME	HPG	CEM	STAY	MARB	YG	CW	REA	BFAT
162	55	12	-4.3	80	135	21	3	8	7	14	0.71	0.12	44	0.15	0.01

Take one look at this deep and soggy made dude and it's easy to see why the Redemption sons have been so popular across the country. If it was me I would keep every daughter I could out of this stud, especially when you combine this bull's female maker "look" with his top 12% CEM, 7% ST and 3% HerdBuilder Index. With his elite top 2% WW and 1% YW EPDs this very well could be one of the highest performance Redemptions in the breed. One of the great things about LSF bulls is their multi-trait superiority and this bull is a prime example with his combination of top 7% CED and 9% BW with top of the breed growth. Speaking of prime, if you need help with the end product merit of your cowherd this guy can get it done with his top 1% GridMaster Index.



BROWN JYJ REDEMPTION Y1334

95 HB	49 GM	5 CED	-2.0 BW	59 WW	90 YW	EPD Averages for Non-Parents Under Two Years of Age									
						21 MILK	1 ME	11 HPG	4 CEM	10 STAY	0.46 MARB	0.02 YG	22 CW	0.12 REA	0.00 BFAT



LSF SRR FAST TRACK 6053D



BROWN PREMIER X7876

**5 LSF SRR FAST TRACK 6053D**

BD: 1/19/16 TATTOO: 6053D REG#: 3531823 HERD: SRR CAT: 100% AR

BECKTON NEBULA M045  
BECKTON NEBULA P P707  
BECKTON LANA M809 EP

**BROWN PREMIER X7876**

5L DESTINATION 893-6215  
BROWN MS DESTINATION T7664  
BROWN MS JULIA M7788  
LCHMN ON TARGET 1016E  
LCHMN ENTERPRISE 1370H  
PARK CHERISH D419

**LSF DINA R5000 U8039**

LCHMN ENTERPRISE 1370H  
LSF DINA N3044 R5000  
LSF DINA J1404 N3044



	<b>\$PROFIT</b>
	<b>Top 21%</b>
<b>ACT BW</b>	<b>\$RANCH</b>
<b>86</b>	<b>Top 25%</b>
<b>WW</b>	<b>\$FEEDER</b>
<b>758</b>	<b>Top 27%</b>
<b>PROJ YW</b>	<b>DISP</b>
<b>1433</b>	<b>***</b>

HERD	GRID	CED	BW	WW	YW	MILK	ME	HPG	CEM	STAY	MARB	YG	CW	REA	BFAT
115	53	5	-1.6	75	126	20	3	11	9	9	0.73	0.21	43	-0.01	0.03

OH, MY! You want to talk about stout, this bull is a complete stud! Imagine the performance that his offspring will have when you combine his look with his exceptional 108 weaning weight ratio and growth EPDs in the top 6% WW and 2% YW. With numbers that good this guy can pay for himself in a hurry. I'd imagine that you can throw away those calf pullers when it comes time to calve his daughters out with his CEM EPD that ranks in the top 3% of the breed. If you want to put your herd on the FAST TRACK to carcass superiority this guy can help get you there with his top 9% MB. Stop leaving dollars on the table with light carcasses, use his top 4% CW EPD to help maximize your profit. With numbers like these it's easy to see why he ranks in the top 4% GMI.

EPD Averages for Non-Parents Under Two Years of Age															
95 HB	49 GM	5 CED	-2.0 BW	59 WW	90 YW	21 MILK	1 ME	11 HPG	4 CEM	10 STAY	0.46 MARB	0.02 YG	22 CW	0.12 REA	0.00 BFAT



*Birk*  
LSF RHO LEADER 615

**6**

**LSF RHO LEADER 615**

BD: 2/22/16 TATTOO: 615 REG#: 3523752 HERD: RHO CAT: 100% AR

BECKTON NEBULA M045  
BECKTON NEBULA P P707  
BECKTON LANA M809 EP

**BROWN PACESETTER Y7170**

BROWN REVELATION P7021  
BROWN MS REVELATION U7748  
BROWN MS ABBY P7944  
5L DIRECT FIRE 1641-6443  
5L DESTINATION 893-6215  
5L ADINA 525-893

**SCHMIDT'S DELLA 14Y**

BECKTON LANCER F442 T  
LSF DELLA G1372 P4062  
PARK ROBIN HOOD G1372



	<b>\$PROFIT</b>
	<b>Top 9%</b>
<b>ACT BW</b>	<b>\$RANCH</b>
<b>83</b>	<b>Top 43%</b>
<b>WW</b>	<b>\$FEEDER</b>
<b>734</b>	<b>Top 6%</b>
<b>PROJ YW</b>	<b>DISP</b>
<b>1382</b>	<b>***</b>

HERD	GRID	CED	BW	WW	YW	MILK	ME	HPG	CEM	STAY	MARB	YG	CW	REA	BFAT
191	55	12	-4.1	67	109	15	5	15	10	16	0.99	-0.07	29	0.41	0

WOW! Wait until you lay your eyes upon this soggy made rascal, he has herd bull written all over him. If you want to impress the neighbors you might want to put this stud in the front pasture. What's even more exciting that this bull's phenotype is his superb genotype. He destroys the antagonisms between birth and growth with calving ease EPDs in the top 6% CED and 10% BW combined with growth EPDs in the top 19% WW and 13% YW. My suggestion would be to keep as many daughters as possible out of this guy with his outstanding ERTs in the top 5% HPG, 2% CEM and 2% ST. You might want to retain interest in his steers as well with his top 2% MB, 20% YG, 24% CW and 11%. This bull's combination of top 1% HBI and GMI is one of the best that you are going to find.



**BROWN PACESETTER Y7170**

EPD Averages for Non-Parents Under Two Years of Age															
95 HB	49 GM	5 CED	-2.0 BW	59 WW	90 YW	21 MILK	1 ME	11 HPG	4 CEM	10 STAY	0.46 MARB	0.02 YG	22 CW	0.12 REA	0.00 BFAT



LSF BRA LIBERATION 6700D



LSF BRA RANSOM 6696D



LSF SRR SIX SHOOTER 6074D

**7 LSF BRA LIBERATION 6700D**  
 BD: 12/29/15 TATTOO: 6700D REG#: 3538973 HERD: BRA CAT: 100% AR

BECKTON NEBULA M045  
 BECKTON NEBULA P P707  
 BECKTON LANA M809 EP  
**BROWN JYJ REDEMPTION Y1334**  
 LJC MISSION STATEMENT P27  
 JYJ MS JOLENE W16  
 HXC JOLENE R548  
 BECKTON EPIC K F075  
 BECKTON EPIC R397 K  
 BECKTON KIT F468 JL  
**BRA VICTORIA Z2892 B4650**  
 LSF ENTERPRISE 7040T  
 BRA VICTORIA S405 Z2892  
 LSF JLJ VICTORIA S405

ACT BW	66	\$PROFIT	Top 9%
SRANCH			
WW	738	\$FEEDER	Top 14%
DISP			
PROJ YW	1135	***	Top 15%

HERD	GRID	CED	BW	WW	YW	MILK	ME	HPG	CEM	STAY	MARB	YG	CW	REA	BFAT
178	54	13	-6.3	65	116	21	-3	14	7	14	0.72	0.21	30	-0.05	0.05

Man, these Redemption sons are good, aren't they? Redemption consistently sires "good" cattle as much as any sire in the history of the breed. If you don't have a son you owe it to yourself, your herd, and your bottom line to incorporate him into your operation. If you have a group of heifers to breed, this bull's combination of a low 66# actual birth weight and calving ease EPDs in the top 3% CED and 2% BW should ensure a much more peaceful calving season for both you and your heifers. Unlike many calving ease bulls this stud also offers mature cow type growth with EPDs in the top 27% WW and 7% YW. His daughters should be show stoppers with decreased inputs, high fertility, calving ease and longevity with his top 23% ME, 9% HPG, 15% CEM and 5% ST.

**8 LSF BRA RANSOM 6696D**  
 BD: 1/2/16 TATTOO: 6696D REG#: 3538967 HERD: BRA CAT: 100% AR

BECKTON NEBULA M045  
 BECKTON NEBULA P P707  
 BECKTON LANA M809 EP  
**BROWN JYJ REDEMPTION Y1334**  
 LJC MISSION STATEMENT P27  
 JYJ MS JOLENE W16  
 HXC JOLENE R548  
 LMAN KING ROB 8621  
 FEDDES ROB 044  
 FED'S BLOCKANA 5114  
**BOXT ERICA 36**  
 BASIN GOLD 508G  
 BOX T BUTTERCUP  
 BROWN CREEK ERICA 330

ACT BW	75	\$PROFIT	Top 38%
SRANCH			
WW	689	\$FEEDER	Top 32%
DISP			
PROJ YW	1208	***	Top 45%

HERD	GRID	CED	BW	WW	YW	MILK	ME	HPG	CEM	STAY	MARB	YG	CW	REA	BFAT
137	52	12	-5.5	49	88	23	-2	12	7	11	0.5	-0.08	15	0.15	-0.02

You might want to sell your calf pullers if you get this guy back home. You could be your heifer's new best friend with his combination of a super low 91 birth weight ratio and calving ease EPDs in the top 6% for CED and 3% BW. The daughters out of this dude should be something else considering his combination of Redemption on the top side and King Rob on the bottom side. They should be filled with fertility, calving ease and they should stay in the herd for years to come with his EPDs in the top 28% HPG, 16% CEM and 29% ST. He also offers the ability to decrease the inputs in your herd with a top 31% ME EPD. If you have been getting docked for those YG 4s this guy can more than help with a YG EPD that ranks in the top 18% of the breed.

**9 LSF SRR SIX SHOOTER 6074D**  
 BD: 1/22/16 TATTOO: 6074D REG#: 3532586 HERD: SRR CAT: 100% AR

**TOP \$ ELIGIBLE**  
 BUF CRK PATRIOT M183  
 VGW JUSTICE 614  
 VGW M82-FIREFLY 0479  
**FRITZ JUSTICE 8013**  
 5L HOBO BEN 04-4422  
 FRITZ CHRIS 6047  
 FRITZ CRIS 1051  
 BECKTON NEBULA M045  
 BECKTON NEBULA P P707  
 BECKTON LANA M809 EP  
**BROWN MS P707 Y7844**  
 BROWN SHAZZAM M6270  
 BROWN MS SHAZZAM P7940  
 BROWN MS MARIAS L7740

ACT BW	71	\$PROFIT	Top 9%
SRANCH			
WW	732	\$FEEDER	Top 3%
DISP			
PROJ YW	1269	***	Top 27%

HERD	GRID	CED	BW	WW	YW	MILK	ME	HPG	CEM	STAY	MARB	YG	CW	REA	BFAT
151	54	12	-4.7	75	117	29	3	10	5	13	0.93	0.2	33	0.29	0.08

Check out the length of spine on this stud. If you want to raise calves with that extra rib look, he can do it. This guy has a superb actual performance spread going from a low 90 birth weight ratio to a 104 weaning ratio. This is reflected in his incredible EPD spread where he obtains calving ease EPDs in the top 6% for both CED and BW as well as top growth EPDs in the top 6% for both WW and YW. That is what I call getting it done. Expect his daughters to be profit centers for years to come with his top 11% ST and 5% HBI. Notice also that his dam was one of our top picks from the Brown dispersal sale. She posts a 102.4 MPPA and is a maternal sister to the \$100,000 Commitment. Check out that carcass merit with his top 2% MB, 16% CW, 21% REA and 1% GMI.

EPD Averages for Non-Parents Under Two Years of Age															
95 HB	49 GM	5 CED	-2.0 BW	59 WW	90 YW	21 MILK	1 ME	11 HPG	4 CEM	10 STAY	0.46 MARB	0.02 YG	22 CW	0.12 REA	0.00 BFAT



# Ludvigson Genetics

## Simply Work

13

LSF RHO MULBERRY 510

BD: 4/5/15 TATTOO: 510 REG#: 1742690 HERD: RHO CAT: 100% AR

**TOP \$ ELIGIBLE** RED HR RAMBO ET 91K  
RED COMPASS MULBERRY 449M  
RED BRYLOR MISS ROC 20H

**RED FINE LINE MULBERRY 26P**  
SILVEIRAS REDFORD  
RED DUS FAYETTE 8G  
RED MC DOUGALL FAYETTE 59A  
BIEBER MAKE MIMI 7249  
FEDDES BIG SKY R9  
FEDDES LAKINA 310

**BROWN MS BIG SKY U7829**  
MYTTY IN FOCUS  
BROWN MS IN FOCUS S7549  
BROWN MS B3 FLOWER N7873

**ACT BW**  
70

**WW**  
615

**PROJ YW**  
1078

**\$PROFIT**  
Top 20%

**\$RANCH**  
Top 9%

**\$FEEDER**  
Top 37%

**DISP**  
\*\*\*

HERD	GRID	CED	BW	WW	YW	MILK	ME	HPG	CEM	STAY	MARB	YG	CW	REA	BFAT
99	50	1	-1	70	110	13	5	19	7	8	0.27	0.01	34	0.28	0

14

LSF RHO MR FORBIDDEN 531

BD: 4/13/15 TATTOO: 531 REG#: 1736604 HERD: RHO CAT: 100% AR

RED COMPASS MULBERRY 449M  
RED FINE LINE MULBERRY 26P  
RED DUS FAYETTE 8G

**WR MR FORBIDDEN 2514 ET**  
CITATION 138  
GT CITA 4060  
JMD F MISS LANA  
BECKTON JULIAN GG B571  
HXC CONQUEST 4405P  
HXC ELLIE MAY MA638

**BROWN MS CONQUEST A7067**  
GLACIER LOGAN 210  
BROWN MS ABIGRACE L7730  
LCHMN ABIGAIL E1013

**ACT BW**  
94

**WW**  
748

**PROJ YW**  
1224

**\$PROFIT**  
Top 13%

**\$RANCH**  
Top 44%

**\$FEEDER**  
Top 11%

**DISP**  
\*\*\*

HERD	GRID	CED	BW	WW	YW	MILK	ME	HPG	CEM	STAY	MARB	YG	CW	REA	BFAT
82	51	4	-1.5	66	105	22	7	11	8	7	0.64	0.09	30	-0.12	-0.01



LSF RHO MR FORBIDDEN 531



LSF SRR ROLLIN DEEP 5293C

15

LSF SRR ROLLIN DEEP 5293C

BD: 4/24/15 TATTOO: 5293C REG#: 1744254 HERD: SRR CAT: 100% AR

BIEBER ROOSEVELT W384  
BIEBER ROLLIN DEEP Y118  
BIEBER TILLY 399W

**BIEBER ROLLIN DEEP A500**  
C A FUTURE DIRECTION 5321  
BASIN ROSE 710P  
BASIN ROSE F521  
BIEBER ROOSEVELT W384  
BIEBER RUSHMORE Y106  
BASIN SAM W169

**LSF SRR GILDA Y1360 A3351**  
LSF MEATPACKER 9076W  
LSF RR GILDA U8267 Y1360  
LSF GILDA P4021 U8267

**ACT BW**  
83

**WW**  
532

**PROJ YW**  
NA

**\$PROFIT**  
Top 8%

**\$RANCH**  
Top 2%

**\$FEEDER**  
Top 29%

**DISP**  
\*\*\*\*

HERD	GRID	CED	BW	WW	YW	MILK	ME	HPG	CEM	STAY	MARB	YG	CW	REA	BFAT
130	51	6	-2.4	65	98	18	-1	16	6	12	0.77	0.16	24	0.05	0.05

Tremendous carcass merit on this bull. He earned a superb 107 IMF ratio on his ultrasound which helps to give him a MB EPD that ranks in the top 7% of the breed. Check out those ERTs. You might want to keep every daughter possible out of him with his top 32% ME, 3% HPG, 28% CEM and 24% ST. On top of that he offers low birth/high growth with top 31% BW and 25% WW.

EPD Averages for Non-Parents Under Two Years of Age

95 HB 49 GM 5 CED -2.0 BW 59 WW 90 YW 21 MILK 1 ME 11 HPG 4 CEM 10 STAY 0.46 MARB 0.02 YG 22 CW 0.12 REA 0.00 BFAT

**16 LSF SRR ROLLIN DEEP 5171C**

BD: 3/9/15 TATTOO: 5171C REG#: 1744264 HERD: SRR CAT: 100% AR

BIEBER ROOSEVELT W384  
BIEBER ROLLIN DEEP Y118  
BIEBER TILLY 399W

**BIEBER ROLLIN DEEP A500**

C A FUTURE DIRECTION 5321  
BASIN ROSE 710P



BASIN ROSE F521  
BECKTON EPIC K F075  
BECKTON EPIC R397 K  
BECKTON KIT F468 JL

**LSF TBJ CRYSTAL R5145 A3431**

LCC RIBEYE A133L  
LSF CRYSTAL LA394 R5145  
LSF CRYSTAL G1382 LA394

ACT BW	83	\$PROFIT	Top 3%
WW	538	\$RANCH	Top 9%
PROJ YW	1060	\$FEEDER	Top 6%
		DISP	***

HERD	GRID	CED	BW	WW	YW	MILK	ME	HPG	CEM	STAY	MARB	YG	CW	REA	BFAT
107	52	5	-3.5	57	89	22	-6	17	4	9	0.86	-0.06	18	0.42	0.02

If you would like a Grid Master Award from the Red Angus Association, you just might want to make sure you take this guy back to the hacienda with you. Check out the phenomenal 121 IMF ratio that he obtained. With scan data like that it's easy to see how he scores a top 4% MB. He gets it done on the other end product traits as well with top 20% YG and 10% REA.



LSF SRR ROLLIN DEEP 5171C

**17 LSF TRA VICTORY 515C**

BD: 4/13/15 TATTOO: 515C REG#: 3473175 HERD: TRA CAT: 100% AR

BECKTON JULIAN GG B571  
HXC CONQUEST 4405P  
HXC ELLIE MAY MA638

**LSF SRR VICTORY 3013A**

BASIN EXT 5233  
LSF DINA T7103 Y1079  
LSF DINA N3114 T7103  
RED NORTHLINE ROB ROY 122K  
ROY ROGERS 5604  
PIE PATTI ANNE 9221



ACT BW	76	\$PROFIT	Top 21%
WW	641	\$RANCH	Top 21%
PROJ YW	1044	\$FEEDER	Top 30%
		DISP	***

**BATTERSON LAKINA 99W**

GLACIER NYACK 688  
BATTERSON LAKINA 323N  
RD LAKINA 6A

HERD	GRID	CED	BW	WW	YW	MILK	ME	HPG	CEM	STAY	MARB	YG	CW	REA	BFAT
95	50	9	-3.1	59	95	25	6	7	5	9	0.29	0.01	22	0.04	-0.01

Got calving ease? If not you might want to load this guy up. Calving season should go much smoother for both you and your cow herd with his top 19% CED and 21% BW. Even with his birth weight ratio that is 2 percent under herd average he still gets it done on performance by earning an impressive 104 weaning ratio. He offers great maternal as well with top 16% MK.



LSF TRA VICTORY 515C

**18 LSF SRR CHRONICLE 5290C**

BD: 4/20/15 TATTOO: 5290C REG#: 1744640 HERD: SRR CAT: 100% AR

BECKTON EPIC R397 K  
LSF SAGA 1040Y  
LSF MINOLA T7172 W9041

**LSF SRR CHRONICLE 3001A**

MESSMER PACKER S008  
LSF MINOLA W9057 Y1039  
LSF MINOLA T7162 W9057  
BASIN EXT 1925  
BASIN EXT 5233  
BASIN PRIMROSE 2043



ACT BW	60	\$PROFIT	Top 4%
WW	529	\$RANCH	Top 3%
PROJ YW	1025	\$FEEDER	Top 13%
		DISP	***

**LSF LARKABA R5195 Z2200**

LCHMN ENTERPRISE 1370H  
LSF LARKABA 59J R5195  
CV 6384 LARKABA 59J

HERD	GRID	CED	BW	WW	YW	MILK	ME	HPG	CEM	STAY	MARB	YG	CW	REA	BFAT
123	52	11	-5.2	49	81	34	10	17	7	9	0.75	-0.01	11	0.25	0.03

How about the calving ease that this guy offers. You might want to see how much you can get for your calf pullers with his combination of a low 56# actual birth weight and 72 birth weight ratio that helps to give him elite calving ease EPDs in the top 10% CED and 4% BW. He brings worlds of fertility and maternal calving ease to the table as well with top 14% CEM and 1% HPG.



LSF SRR CHRONICLE 5290C

EPD Averages for Non-Parents Under Two Years of Age															
95 HB	49 GM	5 CED	-2.0 BW	59 WW	90 YW	21 MILK	1 ME	11 HPG	4 CEM	10 STAY	0.46 MARB	0.02 YG	22 CW	0.12 REA	0.00 BFAT

LUDVIGSON STOCK FARMS • TWO YEAR OLD RED ANGUS BULLS



LSF TRA CHIVAS 536C

**19 LSF TRA CHIVAS 536C**  
 BD: 4/22/15 TATTOO: 536C REG#: 3473168 HERD: TRA CAT: 100% AR

LMAN KING ROB 8621  
 GLACIER CHATEAU 744  
 GLACIER REBALA

**KOESTER CHIVAS 005**  
 RED FINE LINE MULBERRY 26P  
 JACOBSON RAZZBERRY 8014

**JAT MISS AHNA A306**  
 MID-AM KING ROB RRA 507  
 JAT MISS EXCEL ROB 100  
 RRA MISS EXCEL 414

ACT BW	81	\$PROFIT	NA
WW	514	\$SRANCH	NA
PROJ YW	NA	\$FEEDER	NA
		DISP	NA
			★★★★

HERD	GRID	CED	BW	WW	YW	MILK	ME	HPG	CEM	STAY	MARB	YG	CW	REA	BFAT
82	48	-1	-0.6	53	79	25	3	14	2	10	0.38	0.02	16	0.27	0.03

Could your herd use a big dose of the two "M"s? If your cows are lacking in maternal and muscle, this rascal can go a long way toward obtaining your goals with his top 21% MK and 23% REA. Check out that HPG. He ranks in the top 14% for fertility, which is far and away the most important trait in your cowherd and the trait that impacts your bottom line the most.



LSF TRA NEXT 568C

**20 LSF TRA NEXT 568C**  
 BD: 5/26/15 TATTOO: 568C REG#: 3510587 HERD: TRA CAT: 100% AR

BASIN EXT 1925  
 BASIN EXT 5233  
 BASIN PRIMROSE 2043

**LSF NEXT 2107Z**  
 LCC RIBEYE A133L  
 LSF CRYSTAL LA394 R5145  
 LSF CRYSTAL G1382 LA394  
 LCHMN ENTERPRISE 1370H

**TLA MISS DYNA TANK 208**  
 LSF TANK 7005T  
 LSF VICILA H7553 R5168  
 GLACIER CHATEAU 744  
 TC DYNA 14P  
 PIE DYNA CANOOK 8184

ACT BW	56	\$PROFIT	Top 2%
WW	516	\$SRANCH	Top 3%
PROJ YW	NA	\$FEEDER	Top 9%
		DISP	★★★★

HERD	GRID	CED	BW	WW	YW	MILK	ME	HPG	CEM	STAY	MARB	YG	CW	REA	BFAT
68	52	3	-2.6	53	91	26	8	11	6	6	0.7	-0.07	21	0.45	0.01

Have you been wondering how to get one of those coveted Grid Master Awards from the Red Angus Association? It's pretty simple, you use bulls like this with top 11% MB, 20% YG and 8% REA. With numbers like this he obviously has a high GridMaster Index. There is no need to give up calving ease for end product merit, check out this guy's top 27% BW EPD.



LSF TRA PACKER 564C

**21 LSF TRA PACKER 564C**  
 BD: 5/19/15 TATTOO: 564C REG#: 3473158 HERD: TRA CAT: 100% AR

MESSMER JOSHUA 019P  
 MESSMER PACKER S008  
 MESSMER MILLIE 124P

**BIEBER PACKER Y133**  
 GMRA LARAMIE 5110  
 BIEBER SUSAN 340W  
 BIEBER TILLY 9627  
 LMAN KING ROB 8621

**JAT MISS NEW TANK 227**  
 MID-AM KING ROB RRA 507  
 LSF VICTORIA J1393  
 RED BRYLOR NEW TREND 22  
 MFIN MISS NEW TREND N8  
 MFIN FINCH'S LIGHT H24

ACT BW	56	\$PROFIT	Top 38%
WW	478	\$SRANCH	Top 5%
PROJ YW	NA	\$FEEDER	Top 68%
		DISP	★★★★

HERD	GRID	CED	BW	WW	YW	MILK	ME	HPG	CEM	STAY	MARB	YG	CW	REA	BFAT
100	49	1	-0.8	60	91	21	4	15	4	11	0.5	0.15	23	0.21	0.06

Fertility is the biggest driver of profitability in a cow herd. Just think the time, labor and maybe most of all money that is lost if a heifer comes up open. This rascal can help put an end to this problem with his impressive HPG EPD that ranks in the top 5% of the breed. He gets it done on carcass as well with EPDs that rank in the top 32% MB and 31% REA.

EPD Averages for Non-Parents Under Two Years of Age															
95 HB	49 GM	5 CED	-2.0 BW	59 WW	90 YW	21 MILK	1 ME	11 HPG	4 CEM	10 STAY	0.46 MARB	0.02 YG	22 CW	0.12 REA	0.00 BFAT

# LUDVIGSON STOCK FARMS • 18 MONTH OLD RED ANGUS BULLS

## 22 LSF IWF Z02 C17

BD: 8/31/15 TATTOO: C17 REG#: 3512041 HERD: IWF CAT: 99.9% AR 0.1% XX

### TOP \$ ELIGIBLE

BFCK CHEROKEE CNYN 4912  
LCOC WORLD SERIES A041R  
KRN REBA'S ROBIN

### Z02 IWF

W09 IWF NEO-SHO LAST CHANCE S558



KBK GR 288  
NSF ICON P532  
NEO-SHO LAST CHANCE S558  
MS NSF MIMI N525

### Y09 IWF

KBK GOLD ROBBER 173  
KCK GR 308  
KCK MS HUD 180

\$PROFIT	NA
\$RANCH	NA
\$FEEDER	NA
\$DISP	NA
\$STAR	**
ACT BW	82
WW	643
PROJ YW	1137

HERD	GRID	CED	BW	WW	YW	MILK	ME	HPG	CEM	STAY	MARB	YG	CW	REA	BFAT
77	48	-1	0	72	110	18	5	10	6	8	0.13	0.16	36	-0.05	0.02

If you get paid by the pound (and we all do in one way or another) this guy can pay huge dividends to your bottom line. With growth EPDs than rank in the top 10% WW and 12% YW this dude can pay for himself in a hurry. Even with all this growth he still offers calving ease with top 20% CEM. Don't leave dollars on the table with light carcasses, cash in with his top 11% CW.



## 23 LSF IWF Z02 C10

BD: 8/13/15 TATTOO: C10 REG#: 3512036 HERD: IWF CAT: 99.9% AR 0.1% XX

### TOP \$ ELIGIBLE

BFCK CHEROKEE CNYN 4912  
LCOC WORLD SERIES A041R  
KRN REBA'S ROBIN

### Z02 IWF

W09 IWF NEO-SHO LAST CHANCE S558



KBK GR 288  
NSF ICON P532  
NEO-SHO LAST CHANCE S558  
MS NSF MIMI N525

### W09 IWF

KBK GOLD ROBBER 173  
KBK GR 288  
KBK BC7 170

\$PROFIT	NA
\$RANCH	NA
\$FEEDER	NA
\$DISP	NA
\$STAR	**
ACT BW	90
WW	544
PROJ YW	1188

HERD	GRID	CED	BW	WW	YW	MILK	ME	HPG	CEM	STAY	MARB	YG	CW	REA	BFAT
82	49	-1	0.7	68	109	14	5	10	5	9	0.42	0.12	36	0.19	0.03

Here is a 3/4 brother to the previous lot. Just like his brother he offers tremendous profit potential with growth EPDs that rank in the top 17% WW and 13% YW. Just imagine the consistency that these brothers can impart on your next calf crop. This guy offers extra value as well with his top 10% CW. My suggestion would be to load up both of these brothers.



## 24 LSF IWF TRILOGY C18

BD: 9/1/15 TATTOO: C18 REG#: 3512037 HERD: IWF CAT: 99.9% AR 0.1% XX

### TOP \$ ELIGIBLE

MESSMER JOSHUA 019P  
MESSMER PACKER S008  
MESSMER MILLIE 124P

### GMRA TRILOGY 0226

GLACIER CHATEAU 744  
GMRA LAKOTA 625  
GMRA LAKOTA 380  
NSF ICON P532  
NEO-SHO LAST CHANCE S558  
MS NSF MIMI N525



### X02 IWF

KBK GOLD ROBBER 173  
KBK GOLD ROB 225  
KBK MS COUNTERPART 63

\$PROFIT	Top 13%
\$RANCH	Top 5%
\$FEEDER	Top 32%
\$DISP	NA
\$STAR	**
ACT BW	65
WW	600
PROJ YW	1075

HERD	GRID	CED	BW	WW	YW	MILK	ME	HPG	CEM	STAY	MARB	YG	CW	REA	BFAT
114	50	8	-2.1	71	108	12	5	10	8	10	0.38	0.14	31	0.09	0.03

How about the actual performance figures on this guy? He destroys the antagonisms between birth and growth with ratios of 90 birth weight and 110 weaning. That is what I call getting it done. These ratios are reflected in his outstanding EPD line that ranks in the top 22% CED, 12% WW and 15% YW. He offers calving ease as well with top 7% CEM.



### EPD Averages for Non-Parents Under Two Years of Age

95 HB 49 GM 5 CED -2.0 BW 59 WW 90 YW 21 MILK 1 ME 11 HPG 4 CEM 10 STAY 0.46 MARB 0.02 YG 22 CW 0.12 REA 0.00 BFAT



LSF JDC KNOCKOUT 516



LSF SRR TYSON 3025A

**25** LSF JDC KNOCKOUT 516  
 BD: 8/8/15 TATTOO: 516 REG#: 3518731 HERD: JDC CAT: 100% AR

**TOP \$ ELIGIBLE** BUF CRK LANCER R017  
 MUSHRUSH IMPRESSIVE CA U236  
 MUSHRUSH MADAM LT R265

**LSF SRR TYSON 3025A** MESSMER PACKER S008  
 LSF JIBA R5009 W9247  
 LSF JIBA K1004 R5009  
 SITZ TRAVELER 8180  
 S A V FINAL ANSWER 0035  
 S A V EMULOUS 8145

**LCS 012** LCC CHEYENNE B221L  
 BDEE MISS PAGE 748  
 PELTONS MISS PAGE 0729P

ACT BW	77	SPROFIT	Top 74%
WW	490	SRANCH	Top 80%
PROJ YW	1065	SFEEDER	Top 64%
		DISP	***

HERD	GRID	CED	BW	WW	YW	MILK	ME	HPG	CEM	STAY	MARB	YG	CW	REA	BFAT
112	52	8	-3.9	68	110	23	-1	14	6	8	0.57	0.03	30	0.34	0.02

WOW! WOW! WOW! This bull is a stud! It will be easy to spot this square made dude out in the pens. His EPD profile might even be more eye appealing than he is. How does top 23% CED, 12% BW, 17% WW, 12% YW, 8% HPG, 22% CEM, 22% MB, 23% CW and 16% REA sound? Yes that is a top 25% or better ranking on 9 traits. Don't pass up this outstanding outcross!

EPD Averages for Non-Parents Under Two Years of Age															
95 HB	49 GM	5 CED	-2.0 BW	59 WW	90 YW	21 MILK	1 ME	11 HPG	4 CEM	10 STAY	0.46 MARB	0.02 YG	22 CW	0.12 REA	0.00 BFAT

**26 LSF JLW PASSWORD 4586**

BD: 11/5/15 TATTOO: 4586 REG#: 3538191 HERD: WRA CAT: 100% AR

RED CROWFOOT OLE'S OSCAR  
RED SSS OLY 554T  
RED SSS GOLD EDGE 77R

**VGW PASSWORD 170**

LSF BREAKOUT 4081P  
VGW BO-YOGO 0876  
VGW PAT-YOGO 0632  
BFCK CHEROKEE CNYN 4912



LCC CHEYENNE B221L  
HXC 701G

**MONTVUE B221L BONNEBELL R060**

BUF CRK HOBO 2595  
JRN BONNEBELL 921J  
JR BONNEBELL 700G

\$PROFIT	Top 29%
\$RANCH	Top 43%
\$FEEDER	Top 28%
DISP	***
ACT BW	77
WW	694
PROJ YW	1031

HERD	GRID	CED	BW	WW	YW	MILK	ME	HPG	CEM	STAY	MARB	YG	CW	REA	BFAT
133	51	3	-2.2	64	102	20	2	11	7	13	0.75	0.12	28	0	0.02

If you want to produce calves with that "extra rib" look to this long made dude can do it for you. Imagine the look, calving ease and longevity that this stud's daughters can have when you combine his great looks with his top 19% CEM and 16% ST. He will inject growth into his offspring as well with EPDs that rank in the top 30% WW and 22% YW. Notice the top 8% MB as well.



LSF JLW PASSWORD 4586

**27 LSF JLW PASSWORD 4604**

BD: 11/18/15 TATTOO: 4604 REG#: 3538187 HERD: WRA CAT: 100% AR

RED CROWFOOT OLE'S OSCAR  
RED SSS OLY 554T  
RED SSS GOLD EDGE 77R

**VGW PASSWORD 170**

LSF BREAKOUT 4081P  
VGW BO-YOGO 0876  
VGW PAT-YOGO 0632  
LMAN ROBIN HOOD 1174B  
LCHMN BANDITO TRES1781H  
LEACHMAN ELEANOR



**JLW COPPER QUEEN 3890**

FCC RAMBO 502  
FORSTER COPPRQUEEN 7172  
MISS FORSTER CPRTOP 591

\$PROFIT	Top 23%
\$RANCH	Top 30%
\$FEEDER	Top 27%
DISP	****
ACT BW	77
WW	708
PROJ YW	1083

HERD	GRID	CED	BW	WW	YW	MILK	ME	HPG	CEM	STAY	MARB	YG	CW	REA	BFAT
67	50	1	-1.4	61	90	18	2	9	5	7	0.57	0.03	21	0.05	0

Great actual performance spread on this great made bull. He goes from a very moderate 77 pound actual birth weight to an impressive 708 weaning weight with a 105 ratio, which is quite a feat on fescue as many of you know. He brings end product merit to the table as well with a MB EPD that ranks in the top 21% of the breed.



LSF JLW PASSWORD 4604

**28 LSF JLW PASSWORD 4547**

BD: 10/23/15 TATTOO: 4547 REG#: 3538188 HERD: WRA CAT: 100% AR

RED CROWFOOT OLE'S OSCAR  
RED SSS OLY 554T  
RED SSS GOLD EDGE 77R

**VGW PASSWORD 170**

LSF BREAKOUT 4081P  
VGW BO-YOGO 0876  
VGW PAT-YOGO 0632  
5L DESTINATION 893-6215  
MARQUIS ALABAMA BOUND  
FEDDES BLOCKANA 899



**JLW DORY BELLE 3925**

LMN PROOF POSITIVE1305E  
JLW DORY BELLE 3070  
LCHMN DORYJIBA J1265

\$PROFIT	Top 14%
\$RANCH	Top 9%
\$FEEDER	Top 27%
DISP	***
ACT BW	69
WW	648
PROJ YW	1019

HERD	GRID	CED	BW	WW	YW	MILK	ME	HPG	CEM	STAY	MARB	YG	CW	REA	BFAT
117	51	7	-3.1	55	86	22	-1	14	9	10	0.62	0.02	17	0.02	0

Throw away those calf pullers! With this stud's combination of low 68 pound actual birth weight and 92 ratio with a top 21% BW EPD calving season should go much smoother for both you and your heifers. When you study this guy's ERT profile that ranks in the top 33% ME, 23% HPG and 4% CEM you just might want to keep every daughter out of this guy.



VGW PASSWORD 170

EPD Averages for Non-Parents Under Two Years of Age															
95 HB	49 GM	5 CED	-2.0 BW	59 WW	90 YW	21 MILK	1 ME	11 HPG	4 CEM	10 STAY	0.46 MARB	0.02 YG	22 CW	0.12 REA	0.00 BFAT

LUDVIGSON STOCK FARMS • 18 MONTH OLD RED ANGUS BULLS



LSF JLW PASSWORD 4578

**29 LSF JLW PASSWORD 4578**  
 BD: 11/3/15 TATTOO: 4578 REG#: 3538190 HERD: WRA CAT: 100% AR

**TOP \$ ELIGIBLE** RED CROWFOOT OLE'S OSCAR  
 RED SSS OLY 554T  
 RED SSS GOLD EDGE 77R

**VGW PASSWORD 170** LSF BREAKOUT 4081P  
 VGW BO-YOGO 0876  
 VGW PAT-YOGO 0632  
 LAKOTAS HEAVENLY 305  
 LCHMN HEVN'S SAKE 1002F  
 LEACHMAN PRILARK

**LCC DINA LA447** LMAN KING ROB 8621  
 LEACHMAN DINA F1284  
 PRF DINA M283

ACT BW	77	\$PROFIT	Top 4%
WW	659	\$BRANCH	Top 8%
PROJ YW	NA	\$FEEDER	Top 8%
		DISP	★★★★

HERD	GRID	CED	BW	WW	YW	MILK	ME	HPG	CEM	STAY	MARB	YG	CW	REA	BFAT
105	51	6	-1.7	65	107	20	6	12	11	8	0.53	0.04	31	0.11	0

Check out the length of spine and growth that this rascal offers. If you get paid by the pound he can pay for himself in a hurry with growth EPDs in the top 27% WW and 15% YW. Even with all of this performance expect a quiet calving season when you calve out his daughters with his elite top 1% CEM. He brings it on carcass as well with top 27% MB.



LSF JLW P707 4575

**30 LSF JLW P707 4575**  
 BD: 11/2/15 TATTOO: 4575 REG#: 3538182 HERD: WRA CAT: 100% AR

BECKTON NEBULA M045  
 BECKTON NEBULA P P707  
 BECKTON LANA M809 EP

**BROWN P707 Y7002** GLACIER LOGAN 210  
 BROWN MS ABIGRACE L7730  
 LCHMN ABIGAIL E1013  
 LMAN MILKY WAY 2434B  
 HW MILKY WAY 2756  
 HW LUBBOCK 1775

**JLW ICE MAIDEN 3307** LCHMN MON UR GOOD 1705F  
 JLW ICE MAIDEN 2238  
 JLW ICE MAIDEN 1869

ACT BW	78	\$PROFIT	Top 9%
WW	664	\$BRANCH	Top 38%
PROJ YW	1044	\$FEEDER	Top 8%
		DISP	★★★

HERD	GRID	CED	BW	WW	YW	MILK	ME	HPG	CEM	STAY	MARB	YG	CW	REA	BFAT
95	50	4	-0.4	59	90	25	4	14	6	9	0.56	-0.02	23	0.14	-0.01

Here is a chance to incorporate genetics into your herd out of the breed icon Abigrace L7730 with the sire of this bull being a direct son. Take a look at the fertility that this bull offers with his HPG that ranks in the top 15% of the breed. If your herd could use an increase in carcass quality this guy can get it done with his top 15% ranking for MB.



LSF HW P707 4576

**31 LSF HW P707 4576**  
 BD: 11/2/15 TATTOO: 4576 REG#: 3538210 HERD: WRA CAT: 100% AR

BECKTON NEBULA M045  
 BECKTON NEBULA P P707  
 BECKTON LANA M809 EP

**BROWN P707 Y7002** GLACIER LOGAN 210  
 BROWN MS ABIGRACE L7730  
 LCHMN ABIGAIL E1013  
 LSF COMBINATION A301M  
 PAULS CHERRY BOMB 5158  
 BJR CHEROK 101

**HW MISS PRETTY 4007** CORA 11E  
 HW MISS PRETTY 2221  
 H W MISS PRETTY 1574

ACT BW	75	\$PROFIT	Top 17%
WW	662	\$BRANCH	Top 39%
PROJ YW	1062	\$FEEDER	Top 16%
		DISP	★★★

HERD	GRID	CED	BW	WW	YW	MILK	ME	HPG	CEM	STAY	MARB	YG	CW	REA	BFAT
83	50	3	-0.7	59	89	21	5	15	5	8	0.67	0.06	22	0.02	0.01

Here is a paternal brother to the previous lot, just think of the consistency that you could build into your next calf crop by owning both of these brothers. Fertility is the number one profit driver in the cow calf business and this dude offers it in spades with his top 7% HPG EPD. He also offers a chance to increase the carcass quality of your herd with his top 13% MB.

EPD Averages for Non-Parents Under Two Years of Age															
95 HB	49 GM	5 CED	-2.0 BW	59 WW	90 YW	21 MILK	1 ME	11 HPG	4 CEM	10 STAY	0.46 MARB	0.02 YG	22 CW	0.12 REA	0.00 BFAT

**32 LSF JDC EXCELLENT ANSWER 518**

BD: 9/21/15 TATTOO: 518 REG#: 3518742 HERD: JDC CAT: 100% AR

BECKTON NEBULA P P707  
BROWN P707 X7877  
BROWN MS DESTINATION T7664

**DUBAS EXCELLENT ANSWER**

S A V FINAL ANSWER 0035



LCS 012  
BDEE MISS PAGE 748  
KDCS JAGO 822  
KDCS JAMES BOND 007  
KDCS JORJA 821

**KRV WYO GAL 226**

LRAR SAGA 023  
KRV WYO 6010  
RF JESSI 1421-317-1835

ACT BW	86
WW	498
PROJ YW	NA
\$PROFIT	NA
\$RANCH	NA
\$FEEDER	NA
DISP	***

HERD	GRID	CED	BW	WW	YW	MILK	ME	HPG	CEM	STAY	MARB	YG	CW	REA	BFAT
112	49	6	-0.8	58	87	15	-4	12	7	11	0.55	0.06	21	0.09	0.02

Are your inputs starting to outrun your outputs? If so, and you would like to reverse that trend, this stud can help make it happen with a ME EPD that ranks in the top 16% of the breed. He offers loads of fertility and maternal calving ease as well with top 31% HPG and 15% CEM. Notice also the end product merit that he offers with top 25% MB.



LSF JDC EXCELLENT ANSWER 518

**33 LSF JDC EXCELLENT ANSWER 520**

BD: 10/3/15 TATTOO: 520 REG#: 3533748 HERD: JDC CAT: 100% AR

BECKTON NEBULA P P707  
BROWN P707 X7877  
BROWN MS DESTINATION T7664

**DUBAS EXCELLENT ANSWER**

S A V FINAL ANSWER 0035



LCS 012  
BDEE MISS PAGE 748  
CRS DIAMND ROMEO 478  
PANHANDLE NINA 2122

**CRS DIAMND ROMA 8026**

PANHANDLE RAMBO 9005  
CRS DIAMND CASCADE 5001  
7U HI FIDELITY 1659

ACT BW	74
WW	587
PROJ YW	NA
\$PROFIT	Top 18%
\$RANCH	Top 4%
\$FEEDER	Top 42%
DISP	***

HERD	GRID	CED	BW	WW	YW	MILK	ME	HPG	CEM	STAY	MARB	YG	CW	REA	BFAT
93	50	6	-2	57	93	15	0	11	7	8	0.52	0.1	23	-0.04	0.01

Need to inject a big dose of calving ease into your cow herd? If you do, this guy can do it with his CEM EPD that ranks in the top 12% of the breed. You also get the maternal goodness of the dam and her 100.7 MPPA inherited into your herd. Got marbling? If not, and you could use some, check out his MB EPD that ranks in the top 29%.



LSF JDC EXCELLENT ANSWER 520

**34 LSF JDC EXCELLENT ANSWER 517**

BD: 8/22/15 TATTOO: 517 REG#: 3518738 HERD: JDC CAT: 99.7% AR 0.3% XX

BECKTON NEBULA P P707  
BROWN P707 X7877  
BROWN MS DESTINATION T7664

**DUBAS EXCELLENT ANSWER**

S A V FINAL ANSWER 0035



LCS 012  
BDEE MISS PAGE 748  
PANHANDLE CENTERSTAGE

**8011**

7U BECKY 0273  
7U MARY LOGAN 6811

ACT BW	74
WW	474
PROJ YW	NA
\$PROFIT	NA
\$RANCH	NA
\$FEEDER	NA
DISP	***

HERD	GRID	CED	BW	WW	YW	MILK	ME	HPG	CEM	STAY	MARB	YG	CW	REA	BFAT
99	50	7	-2.7	56	89	16	-2	11	8	8	0.57	0.08	19	-0.01	0.02

Take a look at the calving ease this guy offers. If you are tired of standing out in the cold and dark assisting in calving this deep made stud can help alleviate your pain with his top 29% CED and 26% BW EPDs. Unlike many calving ease bulls he also offers maternal calving ease with his top 5% CEM. He can help decrease inputs as well with his top 25% ME.



LSF JDC EXCELLENT ANSWER 517

EPD Averages for Non-Parents Under Two Years of Age															
95 HB	49 GM	5 CED	-2.0 BW	59 WW	90 YW	21 MILK	1 ME	11 HPG	4 CEM	10 STAY	0.46 MARB	0.02 YG	22 CW	0.12 REA	0.00 BFAT



LSF HW ANTICIPATION 4540

**35 LSF HW ANTICIPATION 4540**  
 BD: 10/19/15 TATTOO: 4540 REG#: 3538216 HERD: WRA CAT: 100% AR

RED CROWFOOT OLE'S OSCAR  
 C-BAR ANTICIPATION 101W  
 BROWN MS ABIGRACE L7730

**JLW ANTICIPATION 4141**  
 LCHMN NO EQUAL 1174D  
 HHFF 882 COPPERQUEEN T40  
 FISCHERS COPPERTOP  
 LMAN MILKY WAY 2434B  
 HW MILKY WAY 2756  
 HW LUBBOCK 1775

**HW POCHANTAS 3162**  
 LCHMN MON UR GOOD 1705F  
 HW POCHANTAS 2242  
 HW POCHANTAS 1908

ACT BW	81	SPROFIT	Top 69%
SRANCH	81	SRANCH	Top 81%
WW	709	SFEEDER	Top 56%
PROJ YW	1096	DISP	★★★★

HERD	GRID	CED	BW	WW	YW	MILK	ME	HPG	CEM	STAY	MARB	YG	CW	REA	BFAT
72	47	1	1.6	67	96	26	6	11	7	8	0.37	0.07	29	0.01	0

Here comes a front pasture bull, I believe you will love the attractive look of this long made rascal when you see him. How about the performance that this guy offers? Whether its actual with an incredible 110 weaning ratio or genomic with a top 21% WW EPD, if you market your animals by the pound he has you covered. He offers calving ease as well with top 13% CEM.



**36 LSF HW ANTICIPATION 4580**  
 BD: 11/3/15 TATTOO: 4580 REG#: 3538206 HERD: WRA CAT: 100% AR

RED CROWFOOT OLE'S OSCAR  
 C-BAR ANTICIPATION 101W  
 BROWN MS ABIGRACE L7730

**JLW ANTICIPATION 4141**  
 LCHMN NO EQUAL 1174D  
 HHFF 882 COPPERQUEEN T40  
 FISCHERS COPPERTOP  
 LCC MAJOR LEAGUE A502M  
 T.W. MAJOR LEAGUE  
 TW ZARA 1836

**HW FIREFLY 3893**  
 H.W. MOUNTAIN ROB  
 HW FIREFLY 2651  
 H.W. FIREFLY 2256

ACT BW	74	SPROFIT	Top 41%
SRANCH	74	SRANCH	Top 32%
WW	674	SFEEDER	Top 49%
PROJ YW	1002	DISP	★★★★

HERD	GRID	CED	BW	WW	YW	MILK	ME	HPG	CEM	STAY	MARB	YG	CW	REA	BFAT
85	49	2	-1	65	94	25	8	12	7	8	0.44	0.04	24	-0.08	-0.02

If you like your bulls to be extra deep and long spined here is a bull for you. With his combination of a 105 weaning weight ratio and top 27% WW EPD this bulls offers worlds of pay weight potential. When it comes time to calve out his daughters I would wager that you can throw away those calf pullers with his top 17% CEM.



LSF HW EPIC 4530

**37 LSF HW EPIC 4530**  
 BD: 10/4/15 TATTOO: 4530 REG#: 3538220 HERD: WRA CAT: 100% AR

**TOP \$ ELIGIBLE**

BECKTON EPIC D404  
 BECKTON EPIC K F075  
 BECKTON BELGA D483 KR

**BECKTON EPIC R397 K**  
 BECKTON JULIAN GG B571  
 BECKTON KIT F468 JL  
 BECKTON KIT A517 NP  
 BECKTON JULIAN GG B571  
 DZA JULIUS CQ 718  
 FORSTER COPPRQUEEN 7172

**JLW COPPER QUEEN 3904**  
 LCHMN NO EQUAL 1174D  
 HHFF 882 COPPERQUEEN T40  
 FISCHERS COPPERTOP

ACT BW	76	SPROFIT	Top 49%
SRANCH	76	SRANCH	Top 29%
WW	609	SFEEDER	Top 61%
PROJ YW	1043	DISP	★★★

HERD	GRID	CED	BW	WW	YW	MILK	ME	HPG	CEM	STAY	MARB	YG	CW	REA	BFAT
98	49	-1	0.4	65	103	22	-1	12	5	11	0.43	0.1	32	0.18	0.03

Do you get paid by the pound? If you do here is a candidate that can add tremendous profitability to your next calf crop. Check out his growth EPDs that rank in the top 27% for WW and 21% YW. With numbers like these he can pay for himself in a hurry. Even with the increased outputs he offers, he can still decrease inputs with his top 32% ME.

EPD Averages for Non-Parents Under Two Years of Age															
95 HB	49 GM	5 CED	-2.0 BW	59 WW	90 YW	21 MILK	1 ME	11 HPG	4 CEM	10 STAY	0.46 MARB	0.02 YG	22 CW	0.12 REA	0.00 BFAT

**38 LSF HW TRAVELING ON 4585**

BD: 11/5/15 TATTOO: 4585 REG#: 3538201 HERD: WRA CAT: 100% AR

**TOP \$ ELIGIBLE**

5L NORSEMAN EXPRESS  
5L TRAVLIN EXPRESS 1892-6295  
5L SUNSHINE 699-1892

**TW TRAVELING ON 3457**

BJR MONU 4X-303  
BULL HILL ANGELA 5021  
BULL HILL ANGELA 0063  
5L NORSEMAN EXPRESS  
5L TRAVLIN EXPRESS 1892-6295  
5L SUNSHINE 699-1892



**HW FIREFLY EXPRESS 3571**

H.W. MOUNTAIN ROB  
HW FIREFLY 2651  
H.W. FIREFLY 2256

ACT BW	74	\$PROFIT	NA
WW	718	\$RANCH	NA
PROJ YW	1097	\$FEEDER	NA
		DISP	***

HERD	GRID	CED	BW	WW	YW	MILK	ME	HPG	CEM	STAY	MARB	YG	CW	REA	BFAT
97	50	4	-0.8	79	115	15	3	12	2	10	0.43	0.03	37	0.17	-0.01

WOW! If you are looking for scale pressing performance, you got it! How does an amazing 122 weaning ratio sound to you. This superb performance helps him to score growth EPDs in the top 3% WW and 6% YW. This tight bred stud enables you to maximize profit on your carcasses as well with a CW EPD in the breeds top 8%.



LSF HW TRAVELING ON 4585

**39 LSF TW TRAVELING ON 4548**

BD: 10/23/15 TATTOO: 4548 REG#: 3538223 HERD: WRA CAT: 100% AR

**TOP \$ ELIGIBLE**

5L NORSEMAN EXPRESS  
5L TRAVLIN EXPRESS 1892-6295  
5L SUNSHINE 699-1892

**TW TRAVELING ON 3457**

BJR MONU 4X-303  
BULL HILL ANGELA 5021  
BULL HILL ANGELA 0063  
PERKS ADVANCE 121R  
PIE TEQUILA 5503  
PIE LASAM 491



**TW MRS IMPACT 3517**

LCC RIBEYE A133L  
HUST MS IMPACT P195  
HUST 1488 IM1 6921

ACT BW	78	\$PROFIT	NA
WW	635	\$RANCH	NA
PROJ YW	NA	\$FEEDER	NA
		DISP	***

HERD	GRID	CED	BW	WW	YW	MILK	ME	HPG	CEM	STAY	MARB	YG	CW	REA	BFAT
84	49	2	0.7	73	105	10	0	9	0	10	0.36	0	33	0.19	-0.01

If you want cattle that will definitely push the scales down at pay weight time, I sure hope that you are loading up on these Traveling On sons. Imagine the increased revenue that this bull can create just off the extra pounds that he can produce with his top 9% WW and 18% YW. He will help you capitalize on those heavier carcasses with his top 16% CW.



LSF TW TRAVELING ON 4548

**40 LSF JLW TRAVELING ON 4602**

BD: 11/16/15 TATTOO: 4602 REG#: 3538196 HERD: WRA CAT: 100% AR

**TOP \$ ELIGIBLE**

5L NORSEMAN EXPRESS  
5L TRAVLIN EXPRESS 1892-6295  
5L SUNSHINE 699-1892

**TW TRAVELING ON 3457**

BJR MONU 4X-303  
BULL HILL ANGELA 5021  
BULL HILL ANGELA 0063  
LCHMN GOLD ROBBER 1909E  
LCB GOLDRÖBBER 1105P  
RSLND REBELLA 102-502



**JLW LEGGS 4058**

LCHMN IN POSITION 1026H  
JLW LEGGS 2758  
JLW LEGGS 2034

ACT BW	75	\$PROFIT	NA
WW	657	\$RANCH	NA
PROJ YW	NA	\$FEEDER	NA
		DISP	***

HERD	GRID	CED	BW	WW	YW	MILK	ME	HPG	CEM	STAY	MARB	YG	CW	REA	BFAT
88	50	3	-0.6	77	118	21	5	11	3	9	0.36	0.1	39	0.16	0.01

Check out this long made and muscular made dude. Imagine what a set of feeders will look like out of this guy. How about that super 116 weaning weight ratio that helps to give him growth EPDs in the top 4% WW and 6% YW. Just think of the extra profit this guy is capable of just from the extra pounds alone. Last chance for an 18 month old bull today.



LSF JLW TRAVELING ON 4602

EPD Averages for Non-Parents Under Two Years of Age

95 HB	49 GM	5 CED	-2.0 BW	59 WW	90 YW	21 MILK	1 ME	11 HPG	4 CEM	10 STAY	0.46 MARB	0.02 YG	22 CW	0.12 REA	0.00 BFAT
-------	-------	-------	---------	-------	-------	---------	------	--------	-------	---------	-----------	---------	-------	----------	-----------



LSF DDC LEGEND 67D



LSF SRR LEGEND 3110A

41

LSF DDC LEGEND 67D

BD: 1/23/16 TATTOO: 67D REG#: 3539310 HERD: DDC CAT: 100% AR

---

**TOP \$ ELIGIBLE**

LSF SAGA 1040Y

**LSF SRR LEGEND 3110A**

**GMPLD**

**D&D AMBROSIA B42**

BECKTON EPIC R397 K

LSF MINOLA T7172 W9041

MESSMER PACKER S008

LSF CRYSTAL LA394 Y1401

LSF CRYSTAL G1382 LA394

LCC CHEYENNE B221L

BIEBER ROUSE SAMURAI X22

GHR MARITA R31

LEACHMAN END CUT 1383G

LSF AMBROSIA F602 N3173

PARK MISS HEAVENLY F602

ACT BW	79
WW	718
PROJ YW	1239

\$PROFIT	Top 4%
\$RANCH	Top 4%
\$FEEDER	Top 13%
DISP	***

HERD	GRID	CED	BW	WW	YW	MILK	ME	HPG	CEM	STAY	MARB	YG	CW	REA	BFAT
134	51	7	-1.9	86	135	22	4	14	6	11	0.44	0.23	47	0.15	0.05

Here we are back into our yearling bulls and we are starting off with one stout dude. This rascal's incredible 121 weaning weight ratio is one of the highest in the entire sale and his corresponding growth EPDs that are in the elite top 1% for both WW and YW are some of the highest in the entire country! Check out those ERTs with top 9% HPG, 22% CEM and 27% ST.

95 HB	49 GM	5 CED	-2.0 BW	59 WW	90 YW	EPD Averages for Non-Parents Under Two Years of Age						21 MILK	1 ME	11 HPG	4 CEM	10 STAY	0.46 MARB	0.02 YG	22 CW	0.12 REA	0.00 BFAT
-------	-------	-------	---------	-------	-------	---	--	--	--	--	--	---------	------	--------	-------	---------	-----------	---------	-------	----------	-----------

**LUDVIGSON STOCK FARMS • RED ANGUS YEARLING BULLS**

**42 LSF SRR INDEPENDENCE 6143D**

BD: 2/6/16 TATTOO: 6143D REG#: 3532581 HERD: SRR CAT: 100% AR

**TOP \$ ELIGIBLE**

BUF CRK LANCER R017  
BUF CRK THE RIGHT KIND U199  
BUF CRK SHOSHONE R353

**5L INDEPENDENCE 560-298Y**

TC STOCKMAN 365  
5L BLACK ADINA 525-560  
5L ADINA 293-525  
BECKTON NEBULA M045  
BECKTON NEBULA P P707  
BECKTON LANA M809 EP

**BROWN MS P707 Y6646**

BROWN COMMITMENT S7206  
BROWN MS COMMITMENT W6547  
BROWN MS REVELATION S6937

\$PROFIT
Top 3%
\$RANCH
Top 15%
\$FEEDER
Top 4%
\$DISP
★★

HERD	GRID	CED	BW	WW	YW	MILK	ME	HPG	CEM	STAY	MARB	YG	CW	REA	BFAT
186	56	15	-5.5	64	112	26	0	12	7	15	0.96	-0.13	29	0.47	-0.02

Who made the sale order? This long made rascal has one of the best EPD profiles that you are going to find in this or any other sale. He ranks in the top 1% CED, 3% BW, 29% WW, 11% YW, 12% MK, 11% CEM, 3% ST, 2% MB, 8% YG, 25% CW, 8% REA and 14% FAT. Yes that is a top 25% or better ranking on 11 traits and he is top 31% or better on 2 others. Don't miss this one.

**43 LSF AHR REDEMPTION 613D**

BD: 1/14/16 TATTOO: 613D REG#: 3536258 HERD: AHR CAT: 100% AR

**TOP \$ ELIGIBLE**

BECKTON NEBULA M045  
BECKTON NEBULA P P707  
BECKTON LANA M809 EP

**BROWN JYJ REDEMPTION Y1334**

LJC MISSION STATEMENT P27  
JYJ MS JOLENE W16  
HXC JOLENE R548  
HXC HEMI 4400P  
HXC JACKHAMMER 8800U  
HXC JOLENE 301N

**HUSTON DESTINY 1062Y**

GLACIER LOGAN 210  
SRN DESTINY O912 ET  
FARN RED DESTINY 712

\$PROFIT
Top 17%
\$RANCH
Top 25%
\$FEEDER
Top 21%
\$DISP
★★★

HERD	GRID	CED	BW	WW	YW	MILK	ME	HPG	CEM	STAY	MARB	YG	CW	REA	BFAT
156	53	8	-2.6	76	125	15	0	13	6	14	0.63	0.05	41	0.09	-0.02

HERDBULL ALERT! Remember that they can't all sell first, you can just cut his lot tag out and tell your neighbors that he was lot 1. These Redemptions are some good dudes aren't they? This stud is no exception with his big spread EPDs in the top 25% CED, 27% BW, 5% WW and 2% YW. Keep every daughter with his top 23% HPG, 19% CEM and 7% ST.

**44 LSF RHO REDEMPTION 617**

BD: 2/23/16 TATTOO: 617 REG#: 3523754 HERD: RHO CAT: 100% AR

**BROWN JYJ REDEMPTION Y1334**

BECKTON NEBULA M045  
BECKTON NEBULA P P707  
BECKTON LANA M809 EP  
LJC MISSION STATEMENT P27  
JYJ MS JOLENE W16  
HXC JOLENE R548  
RED COMPASS MULBERRY 449M  
RED FINE LINE MULBERRY 26P  
RED DUS FAYETTE 8G

\$PROFIT
Top 27%
\$RANCH
Top 47%
\$FEEDER
Top 25%
\$DISP
★★★

HERD	GRID	CED	BW	WW	YW	MILK	ME	HPG	CEM	STAY	MARB	YG	CW	REA	BFAT
153	53	9	-3.4	72	126	17	1	11	7	13	0.52	0.17	40	-0.11	0

Trust me when I say this. Buy as many of these Redemptions as possible, there's a reason that they are usually the most popular sire group in sales across the nation. If you are looking for big time, big spread genetics this guy has you covered with top 17% CED, 17% BW, 10% WW and 2% YW. His daughters should be easy calving and stay in the herd for years with his top 15% CEM and 9% ST.



*LSF RHO REDEMPTION 617*

**45 LSF JKK REDEMPTION 6767D**

BD: 1/31/16 TATTOO: 6767D REG#: 3564596 HERD: JKK CAT: 100% AR

**TOP \$ ELIGIBLE**

BECKTON NEBULA M045  
BECKTON NEBULA P P707  
BECKTON LANA M809 EP

**BROWN JYJ REDEMPTION Y1334**

LJC MISSION STATEMENT P27  
JYJ MS JOLENE W16  
HXC JOLENE R548  
SJRA 2174 ELDORADO 533  
RED LOREDO 0421  
RED 0360

\$PROFIT
Top 38%
\$RANCH
Top 56%
\$FEEDER
Top 33%
\$DISP
★★

**PERKS CHRISTY 0213**

PERKS CHATEAU 601S  
RED BETSY 0109  
RED DYNA 7340

HERD	GRID	CED	BW	WW	YW	MILK	ME	HPG	CEM	STAY	MARB	YG	CW	REA	BFAT
134	51	8	-1.2	63	105	21	-1	10	6	13	0.49	0.01	31	0.16	-0.01

Have I mentioned how fantastic the Redemption line daughters are? This bulls daughters should be no exception as they should be easy calving and loaded with longevity with his top 20% CEM and 12% ST. Expect them to need less groceries as well with his ME that is 14% below breed average and we all know the average Red Angus cow is low input.

**46 LSF JKK REDEMPTION 6753D**

BD: 1/25/16 TATTOO: 6753D REG#: 3564584 HERD: JKK CAT: 100% AR

**BROWN JYJ REDEMPTION Y1334**

BECKTON NEBULA M045  
BECKTON NEBULA P P707  
BECKTON LANA M809 EP  
LJC MISSION STATEMENT P27  
JYJ MS JOLENE W16  
HXC JOLENE R548  
5L DIRECT FIRE 1641-6443  
5L RED DIRECTION 691-6046  
5L ADINA 525-691 ET

\$PROFIT
Top 62%
\$RANCH
Top 41%
\$FEEDER
Top 68%
\$DISP
★★★

**SRR IONE 330-060**

RED SIX MILE SAKIC 832S  
SRR LOUISE 060-349  
SRR LOUISE 349-892

HERD	GRID	CED	BW	WW	YW	MILK	ME	HPG	CEM	STAY	MARB	YG	CW	REA	BFAT
161	52	12	-3.4	61	102	18	-1	12	13	13	0.47	-0.02	26	0.14	-0.02

If you are looking for calving season to go a lot smoother next year you might want to consider this good dude with his calving ease EPDs that rank in the top 7% CED and 17% BW. Even with this much calving ease he still displays exceptional growth with a top 23% YW. Check out those ERTs! How about top 29% HPG, 1% CEM and 13% CEM along with a ME 11% below breed average?

**EPD Averages for Non-Parents Under Two Years of Age**

95 HB	49 GM	5 CED	-2.0 BW	59 WW	90 YW	21 MILK	1 ME	11 HPG	4 CEM	10 STAY	0.46 MARB	0.02 YG	22 CW	0.12 REA	0.00 BFAT
-------	-------	-------	---------	-------	-------	---------	------	--------	-------	---------	-----------	---------	-------	----------	-----------



LSF BRA REDEMPTION 6705D



BROWN JYJ REDEMPTION Y1334

47

### LSF BRA REDEMPTION 6705D

BD: 1/18/16 TATTOO: 6705D REG#: 3538977 HERD: BRA CAT: 100% AR

---

BECKTON NEBULA M045  
BECKTON NEBULA P P707  
BECKTON LANA M809 EP  
**BROWN JYJ REDEMPTION Y1334**  
LJC MISSION STATEMENT P27  
JYJ MS JOLENE W16  
 HXC JOLENE R548  
BECKTON JULIAN GG B571  
LCB JEWEL MAKER N155  
HXC STAR LA504  
**MONTVUE N155 DINA S010**  
LCC HEAVEN OR BUST1000B  
MVK DINA 802  
LCHMN DINA F1050

SPROFIT	Top 25%
SRANCH	Top 40%
ACT BW	SFEEDER
89	Top 25%
WW	DISP
711	***
PROJ YW	
1214	

---

HERD	GRID	CED	BW	WW	YW	MILK	ME	HPG	CEM	STAY	MARB	YG	CW	REA	BFAT
149	51	14	-5.2	55	97	18	3	12	7	13	0.44	0.23	21	-0.32	0.03

Imagine that! Another solid made Redemption son. In all honesty Redemption pumps out "good ones" as well as any bull in the history of the breed. There's a reason commercial cattlemen gobble them up. You want to talk about a cow maker, this stud can get it done for you. They should be loaded with fertility, calving ease and longevity with top 28% HPG, 15% CEM and 14% ST.

EPD Averages for Non-Parents Under Two Years of Age															
95 HB	49 GM	5 CED	-2.0 BW	59 WW	90 YW	21 MILK	1 ME	11 HPG	4 CEM	10 STAY	0.46 MARB	0.02 YG	22 CW	0.12 REA	0.00 BFAT

# LUDVIGSON STOCK FARMS • RED ANGUS YEARLING BULLS

## 48 LSF AHR JUSTICE 609D

BD: 1/9/16 TATTOO: 609D REG#: 3536255 HERD: AHR CAT: 100% AR

### TOP \$ ELIGIBLE

BUF CRK PATRIOT M183  
VGW JUSTICE 614  
VGW M82-FIREFLY 0479

### FRITZ JUSTICE 8013

5L HOBO BEN 04-4422  
FRITZ CHRIS 6047  
FRITZ CRIS 1051  
MESSMER JOSHUA 019P  
MESSMER PACKER S008  
MESSMER MILLIE 124P

### AAHR COPPER QUEEN 151X 184Z

SODAK ALLIANCE 5L/S381  
AAHR COPPER QUEEN 151X  
SRN COPPER QUEEN M308

ACT BW	89
WW	762
PROJ YW	1254
\$PROFIT	Top 35%
\$RANCH	Top 9%
\$FEEDER	Top 59%
DISP	***

HERD	GRID	CED	BW	WW	YW	MILK	ME	HPG	CEM	STAY	MARB	YG	CW	REA	BFAT
114	51	6	-1.3	77	120	27	3	8	7	10	0.56	0.07	39	0.34	0.03

There is big time performance in this dude. Check out that 110 weaning ratio. This stud has loads and loads of profit potential with his top 4% ranking for both WW and YW. With a top 11% CEM don't expect calving difficulty with his daughters. He more than gets it done on end product merit as well with top 23% MB, 7% CW and 15% REA.

## 49 LSF JKK TAKEOVER 6769D

BD: 2/2/16 TATTOO: 6769D REG#: 3564598 HERD: JKK CAT: 75% AR 25% SM

### TOP \$ ELIGIBLE

BECKTON JULIAN GG B571  
HXC CONQUEST 4405P  
HXC ELLIE MAY MA638

### LSF TAKEOVER 9943W

MESSMER PACKER S008  
LSF WIDELOAD R5014 U8061  
LSF WIDELOAD N3195 R5014  
RC STINGER 072K  
TNT GUNNER N208  
TNT MISS HONEY L9

### SRR VICTORIA 352-972

SRR EXPLORER 7043  
SRR VICTORIA 972-675  
SRR VICTORIA JOAN 675-711

ACT BW	98
WW	709
PROJ YW	1287
\$PROFIT	Top 26%
\$RANCH	Top 9%
\$FEEDER	Top 47%
DISP	***

HERD	GRID	CED	BW	WW	YW	MILK	ME	HPG	CEM	STAY	MARB	YG	CW	REA	BFAT
96	51	7	-2.1	70	104	24	0	4	5	9	0.74	0.04	29	0.35	0.03

Take one look at this attractive made dude and it will be easy to see why the Takeovers have been some of the high selling bulls in the entire breed. Notice the top 27% CED combined with a 113 weaning weight ratio and top 14% WW and 20% YW EPDs. This stud knocks it out of the park on carcass merit as well with top 15% REA, 26% CW and 9% MB.

## 50 LSF JKK TAKEOVER 6754D

BD: 1/25/16 TATTOO: 6754D REG#: 3564585 HERD: JKK CAT: 100% AR

### LSF TAKEOVER 9943W

BECKTON JULIAN GG B571  
HXC CONQUEST 4405P  
HXC ELLIE MAY MA638



MESSMER PACKER S008  
LSF WIDELOAD R5014 U8061  
LSF WIDELOAD N3195 R5014  
BASIN EXT 5233  
BASIN EXT 7455  
BASIN CHINOOK 06P7

ACT BW	74
WW	643
PROJ YW	1222
\$PROFIT	Top 12%
\$RANCH	Top 3%
\$FEEDER	Top 33%
DISP	**

HERD	GRID	CED	BW	WW	YW	MILK	ME	HPG	CEM	STAY	MARB	YG	CW	REA	BFAT
129	52	13	-4.8	56	89	26	2	10	8	10	0.67	0.02	16	0.31	0.04

HEIFER BULL ALERT! Take this good lookin' rascal home and you can be your heifer's new best friend with his combination of 96 birth weight ratio and calving ease EPDs in the top 4% CED and 6% BW. Expect his daughters to be easy calving as well with his top 5% CEM. Check out that carcass as well with top 13% MB combined with top 19% REA.

## 51 LSF BRA PREMIER 6699D

BD: 12/30/15 TATTOO: 6699D REG#: 3538985 HERD: BRA CAT: 100% AR

### BROWN PREMIER X7876

BECKTON NEBULA M045  
BECKTON NEBULA P P707  
BECKTON LANA M809 EP



5L DESTINATION 893-6215  
BROWN MS DESTINATION T7664  
BROWN MS JULIA M7788  
BECKTON JULIAN GG B571  
HXC CONQUEST 4405P  
HXC ELLIE MAY MA638

ACT BW	42
WW	616
PROJ YW	1187
\$PROFIT	Top 4%
\$RANCH	Top 1%
\$FEEDER	Top 22%
DISP	***

HERD	GRID	CED	BW	WW	YW	MILK	ME	HPG	CEM	STAY	MARB	YG	CW	REA	BFAT
156	54	12	-4.4	71	111	13	0	11	5	13	1.03	0.11	30	-0.12	0

You have to love the length of spine and muscularity that this bull offers. Many people out there are looking for either a heifer bull or a growth bull. Why settle for one when you can have both in the same animal. This stud offers one of the best spreads you are going to find with top 6% CED, 8% BW, 11% WW and 11% YW along with chart topping 1% MB.

## 52 LSF RHO BROWN ALLIANCE 621

BD: 2/26/16 TATTOO: 621 REG#: 3523758 HERD: RHO CAT: 100% AR

### TOP \$ ELIGIBLE

BECKTON NEBULA M045  
BECKTON NEBULA P P707  
BECKTON LANA M809 EP

### BROWN ALLIANCE X7795

LJC MISSION STATEMENT P27  
C-BAR & BROWN ABIGRACE T714  
BROWN MS ABIGRACE L7730  
BLUE SPRUCE ZOOK 50H  
RED DWAJO GLADIATOR 32L  
RED DWAJO SUPERIOR 4H

ACT BW	101
WW	804
PROJ YW	1305
\$PROFIT	Top 15%
\$RANCH	Top 42%
\$FEEDER	Top 13%
DISP	***

### WCR MISS RHONDA GL 2072Z

RED CRESCENT CREEK FRCHIEF  
RED SOO LINE RHONDA 5109  
RED GEIS RHODA 176'99

HERD	GRID	CED	BW	WW	YW	MILK	ME	HPG	CEM	STAY	MARB	YG	CW	REA	BFAT
104	52	2	0.3	71	119	21	-4	9	5	11	0.67	0.08	42	0.13	0

Here comes a son of Alliance, the bull that has sired some of our most popular bulls and females in our Western Classic Sale. This bull is a scale presser deluxe with his combination of an outstanding 112 weaning weight ratio combined with growth EPDs in the top 11% WW and 5% YW. Plus you get all of this output with decreased inputs with his top 19% ME.

## 53 LSF H2R PROFITBUILDER D615

BD: 2/11/16 TATTOO: D615 REG#: 3515882 HERD: H2R CAT: 100% AR

### TOP \$ ELIGIBLE

HXC CONQUEST 4405P  
LSF TAKEOVER 9943W  
LSF WIDELOAD R5014 U8061

### H2R PROFITBUILDER B403

BECKTON NEBULA P P707  
BROWN MS P707 Y6674  
BROWN MS MISSION STMT T6963  
BROWN/BOLA CHEROKEE 62N  
BROWN-CH CHEROKEE 3570S  
CEDAR HILL 57M

### TPW 524 CH CHERO X39

PPR CAYENNE CHAT 524  
PPR O'PRINCESS 635  
PPR O'PRINCESS 544

ACT BW	99
WW	830
PROJ YW	1252
\$PROFIT	Top 4%
\$RANCH	Top 28%
\$FEEDER	Top 4%
DISP	***

HERD	GRID	CED	BW	WW	YW	MILK	ME	HPG	CEM	STAY	MARB	YG	CW	REA	BFAT
187	54	8	-1.1	80	128	21	4	12	6	18	0.78	-0.1	44	0.63	-0.01

And the herd bulls just keep coming! This dude is a performance powerhouse. He can put pounds on the ground and extra dollars in your pocket with his 105 weaning weight ratio and growth EPDs that rank in the top 2% for both WW and YW. Keep every daughter and retain interest in every steer with his top 27% HPG, 28% CEM, 1% ST, 6% MB, 13% YG, 3% CW, 27% FAT, 2% REA, 1% HBI and 1% GMI.

### EPD Averages for Non-Parents Under Two Years of Age

95 HB	49 GM	5 CED	-2.0 BW	59 WW	90 YW	21 MILK	1 ME	11 HPG	4 CEM	10 STAY	0.46 MARB	0.02 YG	22 CW	0.12 REA	0.00 BFAT
-------	-------	-------	---------	-------	-------	---------	------	--------	-------	---------	-----------	---------	-------	----------	-----------

# LUDVIGSON STOCK FARMS • RED ANGUS YEARLING BULLS

## 54 LSF DDC CONQUEST 613D

BD: 1/20/16 TATTOO: 613D REG#: 3539332 HERD: DDC CAT: 100% AR

BKT JULIAN 7526 G  
BECKTON JULIAN GG B571  
BKT MARTA 9A13 JL

### HXC CONQUEST 4405P

BFCCK CHEROKEE CNYN 4912  
HXC ELLIE MAY MA638  
HXC 529E  
BFCCK CHEROKEE CNYN 4912  
D&D STONEWALL 61S  
LSF ROBIN HOOD H1365

### D&D LASS U89

BIEBER MONTOYA 8237  
D&D LASS 41P  
BIEBER ERIC LASS 5791

\$PROFIT	
ACT BW	Top 49%
84	\$RANCH
WW	Top 33%
568	\$FEEDER
PROJ YW	Top 58%
1162	DISP
	**

HERD	GRID	CED	BW	WW	YW	MILK	ME	HPG	CEM	STAY	MARB	YG	CW	REA	BFAT
91	51	11	-2.7	60	93	20	4	6	1	9	0.61	-0.02	22	0.4	0.03

It should be easy for you to find this dark red stud out in the pens on sale day. If you need calving ease this guy has it with his top 8% CED and 26% BW. You have to absolutely love how he completely destroys the antagonisms between quality grade and muscling with his end product EPDs that rank in the top 18% for MB and 11% for REA.

## 55 LSF AHR NEW DIRECTION 600D

BD: 12/23/15 TATTOO: 600D REG#: 3536251 HERD: AHR CAT: 100% AR

MYTTY IN FOCUS  
ANDRAS IN FOCUS B152  
ANDRAS PINETA B91

### ANDRAS NEW DIRECTION R240

MORGANS DIRECTION 111 9901  
ANDRAS KURUBA B111  
ANDRAS KURUBA B71  
BECKTON NEBULA P P707  
BROWN JYJ REDEMPTION Y1334  
JYJ MS JOLENE W16

### AAHR CASSIDY 425B

LCC CHEYENNE B221L  
AAHR CASSIDY 2008Z  
HORNUNG CASSIDY 100R

\$PROFIT	
ACT BW	Top 1%
77	\$RANCH
WW	Top 1%
709	\$FEEDER
PROJ YW	Top 5%
1105	DISP
	***

HERD	GRID	CED	BW	WW	YW	MILK	ME	HPG	CEM	STAY	MARB	YG	CW	REA	BFAT
104	53	9	-3.7	66	111	25	-3	11	6	7	0.83	0.1	31	0.16	0.03

We just knew we were on to something good when we put New Direction on Redemption. Check out the beautifully balanced EPD spread of birth and growth on this bull with his top 18% CED, 14% BW, 24% WW and 11% YW. If you are looking to inject some carcass quality into your herd he has you covered with his top 5% MB as well as top 20% CW.

## 56 LSF RHO NEW DIRECTION 613

BD: 2/23/16 TATTOO: 613 REG#: 3523750 HERD: RHO CAT: 100% AR

MYTTY IN FOCUS  
ANDRAS IN FOCUS B152  
ANDRAS PINETA B91

### ANDRAS NEW DIRECTION R240

MORGANS DIRECTION 111 9901  
ANDRAS KURUBA B111  
ANDRAS KURUBA B71  
RED LAZY MC COWBOY CUT 26U  
RED LAZY MC HONKY TONK 11X  
RED YV PATTY 701T

### RED LAZY MC ECHO DUCHESS 13Z

RED BROX JIGSAW 35J  
RED MS BILTRITE PRIME RIB 24  
RED PRAIRIE ECHO DUCHESS 13Z

\$PROFIT	
ACT BW	Top 49%
94	\$RANCH
WW	Top 32%
747	\$FEEDER
PROJ YW	Top 58%
1240	DISP
	**

HERD	GRID	CED	BW	WW	YW	MILK	ME	HPG	CEM	STAY	MARB	YG	CW	REA	BFAT
72	49	4	-0.5	54	91	22	-9	12	5	7	0.43	0.12	24	0.11	0.04

Check out the look on this guy. Take him home and you really get the guys down at the coffee shop to talking. He is the front pasture kind. With the rising costs of inputs this stud can go a long way towards lowering the maintenance costs of your herd with his outstanding ME in the top 3% of the breed. He offers extra fertility as well with top 32% HPG.

## 57 LSF JKK TYSON 6756D

BD: 1/27/16 TATTOO: 6756D REG#: 3564586 HERD: JKK CAT: 100% AR

BUF CRK LANCER R017  
MUSHRUSH IMPRESSIVE CA U236  
MUSHRUSH MADAM LT R265

### LSF SRR TYSON 3025A

MESSMER PACKER S008  
LSF JIBA R5009 W9247  
LSF JIBA K1004 R5009  
MESSMER PACKER S008  
LAUBACH PACKER 1041  
LAUBACH JUANA 561

### SRR DOROTHY 3185-8016

SRR MR SENSATION 696  
SRR DOROTHY 8016-007  
SRR DOROTHY 007-10F

\$PROFIT	
ACT BW	Top 62%
78	\$RANCH
WW	Top 5%
631	\$FEEDER
PROJ YW	Top 88%
1191	DISP
	***

HERD	GRID	CED	BW	WW	YW	MILK	ME	HPG	CEM	STAY	MARB	YG	CW	REA	BFAT
99	51	7	-3.7	62	96	25	1	13	4	9	0.5	0.08	22	0.23	0.04

WOW! Check out the depth on this stud. He is one heavy made dude. How often do you find a bull with this kind of makeup combined with this much calving ease? His EPDs that rank in the top 28% CED and 14% BW should ensure both you and your females a peaceful calving season next year. Think of the females he can produce with his top 17% MK and 23% HPG.

## 58 LSF JKK PREMIER 6755D

BD: 1/27/16 TATTOO: 6755D REG#: Pending HERD: JKK CAT: 100% AR

BECKTON NEBULA M045  
BECKTON NEBULA P P707  
BECKTON LANA M809 EP

### BROWN PREMIER X7876

5L DESTINATION 893-6215  
BROWN MS DESTINATION T7664  
BROWN MS JULIA M7788  
K2 RED ALLIANCE 1602 73  
RED WHEATLAND 1235  
RED VALORIE 4258

### SRR FLO-MARIE 3147-811

GMRA WIDE SPREAD 972  
SRR FLO-MARIE 811-150  
SRR FLO-MARIE 150-185

\$PROFIT	
ACT BW	NA
	\$RANCH
WW	NA
	\$FEEDER
PROJ YW	NA
NA	DISP
	***

HERD	GRID	CED	BW	WW	YW	MILK	ME	HPG	CEM	STAY	MARB	YG	CW	REA	BFAT
146	53	7	-3.3	65	101	12	2	14	7	13	0.98	0.10	25	0.08	0.03



EPD Averages for Non-Parents Under Two Years of Age

95 HB 49 GM 5 CED -2.0 BW 59 WW 90 YW 21 MILK 1 ME 11 HPG 4 CEM 10 STAY 0.46 MARB 0.02 YG 22 CW 0.12 REA 0.00 BFAT

# LUDVIGSON STOCK FARMS • RED ANGUS YEARLING BULLS

## 59 LSF H2R PREMIER D624

BD: 2/24/16 TATTOO: D624 REG#: 3515905 HERD: H2R CAT: 100% AR

### TOP \$ ELIGIBLE

BECKTON NEBULA M045  
BECKTON NEBULA P P707  
BECKTON LANA M809 EP

### BROWN PREMIER X7876

5L DESTINATION 893-6215  
BROWN MS DESTINATION T7664  
BROWN MS JULIA M7788  
LJC LANCER 806  
LJC MISSION STATEMENT P27



### BROWN MS MISSION STMT X7559

LJC HANNAH 106  
PIE GRIDMASTER 589  
DUNN JIBA 0704  
LCC JIBA MA970

ACT BW	110	\$PROFIT	Top 1%
WW	869	\$BRANCH	Top 35%
PROJ YW	1218	\$FEEDER	Top 1%
		DISP	***

HERD	GRID	CED	BW	WW	YW	MILK	ME	HPG	CEM	STAY	MARB	YG	CW	REA	BFAT
179	55	7	-0.7	78	125	6	1	13	6	17	1.14	-0.12	43	0.6	-0.02

Do you want to know how our customers top Superior and win Grid Master Awards so often? I'll give you some insider information here, they buy bulls like this. When you sale steers out of bulls with top 1% MB, 10% YG, 3% CW, 2% REA, 14% FAT and 1% GMI they know that they are getting value for the money they are spending. Check out his top 18% HPG, 28% CEM, 1% ST and 1% HBI.



LSF H2R PREMIER D624

## 60 LSF DDC PREMIER 612D

BD: 1/15/16 TATTOO: 612D REG#: 3539318 HERD: DDC CAT: 100% AR

### BROWN PREMIER X7876

BECKTON NEBULA M045  
BECKTON NEBULA P P707  
BECKTON LANA M809 EP



### D&D FIONA B48

5L DESTINATION 893-6215  
BROWN MS DESTINATION T7664  
BROWN MS JULIA M7788  
LCC CHEYENNE B221L  
BIEBER ROUSE SAMURAI X22  
GHR MARITA R31  
D&D STONEWALL 61S  
D&D FIONA U86  
D&D FIONA R54

ACT BW	71	\$PROFIT	Top 16%
WW	566	\$BRANCH	Top 10%
PROJ YW	1123	\$FEEDER	Top 29%
		DISP	***

HERD	GRID	CED	BW	WW	YW	MILK	ME	HPG	CEM	STAY	MARB	YG	CW	REA	BFAT
141	54	6	-3.7	66	112	12	4	15	6	12	0.89	0.02	32	0.25	0

OH, MY! Take a look at the length of spine and the muscularity that this bull possesses. Can you imagine the set of steers that this stud can produce. Especially with his set of carcass EPDs that rank in the top 3% MB, 18% CW, and 26% REA. With numbers like that it's easy to see how he scores a top 1% GMI. Clint you need to make sure you get this bull's new owner's number.

## 61 LSF JKK REDEMPTION 6763D

BD: 1/29/16 TATTOO: 6763D REG#: 3564592 HERD: JKK CAT: 100% AR

### TOP \$ ELIGIBLE

BECKTON NEBULA M045  
BECKTON NEBULA P P707  
BECKTON LANA M809 EP

### BROWN JYJ REDEMPTION Y1334

LJC MISSION STATEMENT P27  
JYJ MS JOLENE W16  
HXC JOLENE R548  
JKC HUCKLEBERRY 701  
SUTH BETTER HUCKLEBERRY 76W  
SUTH BETTER INDIGO 210N



### SSR FLO-MARIE 3211-713

BIEBER MAKE MIMI 7249  
SSR FLO-MARIE 713-394  
SSR FLO-MARIE 394-185

ACT BW	76	\$PROFIT	Top 19%
WW	694	\$BRANCH	Top 21%
PROJ YW	1220	\$FEEDER	Top 27%
		DISP	***

HERD	GRID	CED	BW	WW	YW	MILK	ME	HPG	CEM	STAY	MARB	YG	CW	REA	BFAT
167	53	13	-3.8	73	118	15	-3	11	7	14	0.59	0.01	34	0.1	-0.02

HEIFER BULL ALERT! Take this bull home and put a smile on those heifer's faces with this bulls outstanding calving ease EPDs that rank in the top 4% CED and 13% BW. This stud offers high performance growth EPDs as well with top 8% WW and 6% YW. With the combination of his top 5% ST, 2% HBI and elite cow family, you just might to keep every daughter.

## 62 LSF BRA REDEMPTION 6697D

BD: 1/10/16 TATTOO: 6697D REG#: 3538969 HERD: BRA CAT: 100% AR

### BROWN JYJ REDEMPTION Y1334

BECKTON NEBULA M045  
BECKTON NEBULA P P707  
BECKTON LANA M809 EP  
LJC MISSION STATEMENT P27  
JYJ MS JOLENE W16



### BOXT REU ROSE 82

HXC JOLENE R548  
BFLO CR VC CHIEF 105  
GLACIER LOGAN 210  
GLACIER REBALAS  
FEDDES ROB 044  
BOXT REV ROSE  
BOXT PENNY

ACT BW	80	\$PROFIT	Top 40%
WW	638	\$BRANCH	Top 42%
PROJ YW	1090	\$FEEDER	Top 42%
		DISP	***

HERD	GRID	CED	BW	WW	YW	MILK	ME	HPG	CEM	STAY	MARB	YG	CW	REA	BFAT
129	51	10	-4.6	44	74	21	-1	11	9	11	0.56	-0.02	8	0.02	0

Calving season should be much less eventful if you take this guy home with his combination of 97 birth weight ratio and calving ease EPDs in the top 12% CED and 7% BW. You should be able to throw away the calf pullers as well when you calve out his daughters with his top 4% CEM. If your inputs are spiraling out of control check out his top 33% ME.



LSF BRA REDEMPTION 6697D

EPD Averages for Non-Parents Under Two Years of Age															
95 HB	49 GM	5 CED	-2.0 BW	59 WW	90 YW	21 MILK	1 ME	11 HPG	4 CEM	10 STAY	0.46 MARB	0.02 YG	22 CW	0.12 REA	0.00 BFAT



LSF DDC LEGEND 64D

**63** LSF DDC LEGEND 64D  
 BD: 1/24/16 TATTOO: 64D REG#: 3539306 HERD: DDC CAT: 100% AR

BECKTON EPIC R397 K  
 LSF SAGA 1040Y  
 LSF MINOLA T7172 W9041  
**LSF SRR LEGEND 3110A**  
 MESSMER PACKER S008  
 LSF CRYSTAL LA394 Y1401  
 LSF CRYSTAL G1382 LA394  
 BECKTON NEBULA P P707  
 LSF RAB SOVEREIGN X7780  
 BROWN MS DESTINATION T7664  
**D&D CRYSTAL B41**  
 LCC RIBEYE A133L  
 LSF CRYSTAL J1352 P4018  
 LSF CRYSTAL C09 J1352

ACT BW	81
WW	699
PROJ YW	1193
\$PROFIT	Top 28%
\$BRANCH	Top 25%
\$FEEDER	Top 37%
\$DISP	***

HERD	GRID	CED	BW	WW	YW	MILK	ME	HPG	CEM	STAY	MARB	YG	CW	REA	BFAT
129	51	10	-3.5	71	109	20	2	16	5	11	0.58	0.23	30	-0.12	0.04

MY, MY! Would you check out the actual performance spread on this guy. He explodes the antagonisms between birth and growth with exceptional ratios of 98 birth and 118 weaning. With ratios like that it's certainly easy to see how he has an impeccable EPD spread with top 13% CED, 16% BW, 11% WW and 13% YW. How about that fertility with top 3% HPG.

**64** LSF AHR JUSTICE 614D  
 BD: 1/15/16 TATTOO: 614D REG#: 3536259 HERD: AHR CAT: 100% AR

BUF CRK PATRIOT M183  
 VGW JUSTICE 614  
 VGW M82-FIREFLY 0479  
**FRITZ JUSTICE 8013**  
 5L HOBO BEN 04-4422  
 FRITZ CHRIS 6047  
 FRITZ CRIS 1051  
 5L ALLIANCE 174-5342  
 SODAK ALLIANCE 5L/S381  
 SODAK OLIVE M108  
**AAHR COPPER QUEEN 151X**  
 FORSTER BLAZE 6129  
 SRN COPPER QUEEN M308  
 FORSTER COPPRQUEEN 7166

ACT BW	69
WW	646
PROJ YW	1117
\$PROFIT	Top 16%
\$BRANCH	Top 1%
\$FEEDER	Top 61%
\$DISP	**

HERD	GRID	CED	BW	WW	YW	MILK	ME	HPG	CEM	STAY	MARB	YG	CW	REA	BFAT
105	51	10	-4.5	53	83	33	2	8	9	9	0.51	0	13	0.2	0.02

Do you have a bunch of Redemption and P707 line daughters and been wondering what to breed to them? Here's a good choice. With his combination of calving ease and maternal EPDs he can do a lot of good for you with his top 12% CED, 8% BW and 1% MK. It should be pretty uneventful when you calve out his daughters with his top 4% CEM.

EPD Averages for Non-Parents Under Two Years of Age															
95 HB	49 GM	5 CED	-2.0 BW	59 WW	90 YW	21 MILK	1 ME	11 HPG	4 CEM	10 STAY	0.46 MARB	0.02 YG	22 CW	0.12 REA	0.00 BFAT



LSF SRR POSSESSION 6230D

**65** **LSF SRR POSSESSION 6230D**  
 BD: 2/24/16 TATTOO: 6230D REG#: 3532028 HERD: SRR CAT: 100% AR

BECKTON JULIAN GG B571  
 HXC CONQUEST 4405P  
 HXC ELLIE MAY MA638

**LSF TAKEOVER 9943W**

MESSMER PACKER S008  
 LSF WIDELOAD R5014 U8061  
 LSF WIDELOAD N3195 R5014  
 BECKTON NEBULA M045  
 BECKTON NEBULA P P707  
 BECKTON LANA M809 EP

**BROWN MS P707 X7580**

LJC MISSION STATEMENT P27  
 C-BAR & BROWN ABIGRACE T714  
 BROWN MS ABIGRACE L7730

	<b>\$PROFIT</b>
	<b>Top 1%</b>
<b>ACT BW</b>	<b>\$RANCH</b>
<b>76</b>	<b>Top 1%</b>
<b>WW</b>	<b>\$FEEDER</b>
<b>731</b>	<b>Top 7%</b>
<b>PROJ YW</b>	<b>DISP</b>
<b>1133</b>	<b>★★★★</b>

HERD	GRID	CED	BW	WW	YW	MILK	ME	HPG	CEM	STAY	MARB	YG	CW	REA	BFAT
206	54	12	-5.3	63	103	25	1	16	7	18	0.91	0.04	24	0.19	0.02

HERD BULL ALERT! Here comes a great one. You need to keep as many daughters as possible out of this guy with his exceptional ERTs in the top 2% HPG, 17% CEM and 1% ST, which explains his off the charts HBI. Notice as well that his dam is a full sister to Alliance and Synergy. Calving ease, growth, carcass, pedigree, this bull does it all. This bull deserves to be sampled.

**66** **LSF AHR NEW DIRECTION 620D**  
 BD: 2/14/16 TATTOO: 620D REG#: 3536261 HERD: AHR CAT: 100% AR

**TOP \$ ELIGIBLE**

MYTTY IN FOCUS  
 ANDRAS IN FOCUS B152  
 ANDRAS PINETA B91

**ANDRAS NEW DIRECTION R240**

MORGANS DIRECTION 111 9901  
 ANDRAS KURUBA B111  
 ANDRAS KURUBA B71  
 MESSMER JOSHUA 019P  
 MESSMER PACKER S008  
 MESSMER MILLIE 124P

**AAHR TOOTSIE 1042Y 3003A**

5L TRADESMAN 1715-6237  
 AAHR TOOTSIE 1042Y  
 MEADO-WEST TOOTSIE

	<b>\$PROFIT</b>
	<b>Top 28%</b>
<b>ACT BW</b>	<b>\$RANCH</b>
<b>90</b>	<b>Top 9%</b>
<b>WW</b>	<b>\$FEEDER</b>
<b>749</b>	<b>Top 49%</b>
<b>PROJ YW</b>	<b>DISP</b>
<b>1182</b>	<b>★★★</b>

HERD	GRID	CED	BW	WW	YW	MILK	ME	HPG	CEM	STAY	MARB	YG	CW	REA	BFAT
79	52	3	-0.1	76	126	23	1	12	5	6	0.77	0.15	45	0.24	0.03

If you would like to show off a little to your friends, make sure that you stick this fantastic profiling bull in your front pasture. Not only does this guy have the look, he has the performance as well. If you want to put out some scale busting calves this guy can do it with his 108 weaning ratio and top 5% WW and 2% YW EPDs. He can put out the quality grade as well with top 7% MB.

EPD Averages for Non-Parents Under Two Years of Age															
95 HB	49 GM	5 CED	-2.0 BW	59 WW	90 YW	21 MILK	1 ME	11 HPG	4 CEM	10 STAY	0.46 MARB	0.02 YG	22 CW	0.12 REA	0.00 BFAT

# LUDVIGSON STOCK FARMS • RED ANGUS YEARLING BULLS

## 67 LSF BRA NIGHT CALVER 6704D

BD: 12/31/15 TATTOO: 6704D REG#: 3538986 HERD: BRA CAT: 100% AR

### TOP \$ ELIGIBLE

MESSMER JOSHUA 019P  
MESSMER PACKER S008  
MESSMER MILLIE 124P

### LSF NIGHT CALVER 9921W

FEDDES BIG SKY R9  
LSF DELLA P4078 U8051  
LSF DELLA G1372 P4078  
BECKTON NEBULA P P707  
BROWN JYJ REDEMPTION Y1334  
JYJ MS JOLENE W16

### BRA ERICA 36 B4651

FEDDES ROB 044  
BOXT ERICA 36  
BOXT T BUTTERCUP

ACT BW	32
SRANCH	Top 11%
WW	Top 3%
578	\$FEEDER
PROJ YW	Top 30%
1008	DISP
	***

HERD	GRID	CED	BW	WW	YW	MILK	ME	HPG	CEM	STAY	MARB	YG	CW	REA	BFAT
186	53	16	-6.4	67	109	26	0	14	5	16	0.57	0	25	0.3	0.01

This guy is a heifer bull deluxe. He also has one of the biggest spreads in this sale but in the entire country. It's hard enough to find a bull that ranks in the top 1% for both CED and BW, but to combine that with top 20% WW and 14% YW is truly a rare find. Throw in his ERTs in the top 14% HPG, 2% ST and 1% HBI combined with carcass in the top 23% MB, 20% REA and 2% GMI and you really have something.



LSF DDC INDEPENDENCE 610D



LSF DDC INDEPENDENCE 63D

## 68 LSF DDC INDEPENDENCE 62D

BD: 1/7/16 TATTOO: 62D REG#: 3539316 HERD: DDC CAT: 100% AR

### TOP \$ ELIGIBLE

BUF CRK LANCER R017  
BUF CRK THE RIGHT KIND U199  
BUF CRK SHOSHONE R353

### 5L INDEPENDENCE 560-298Y

TC STOCKMAN 365  
5L BLACK ADINA 525-560  
5L ADINA 293-525  
PIE ATLANTIC 2204  
RED CORNER CREEK CASH 2R  
RED NORTHLINE PRINCESS 59L

### D&D MSB AMBROSIA B46

WEBR DOC HOLLIDAY 2N  
D & D AMBROSIA T71  
D&D AMBROSIA R52

ACT BW	70
SRANCH	Top 12%
WW	Top 19%
608	\$FEEDER
PROJ YW	Top 18%
1061	DISP
	***

HERD	GRID	CED	BW	WW	YW	MILK	ME	HPG	CEM	STAY	MARB	YG	CW	REA	BFAT
129	50	11	-4.3	64	100	19	-1	11	9	10	0.1	-0.08	23	0.4	0

Throw those calf pullers away! If you have a group of heifers to breed I sure hope that you are loading up on these good calving ease bulls. His combination of a low 62# actual birth weight with a 85 ratio and calving ease EPDs in the top 9% for both CED and BW should ensure that you get reacquainted with your pillow next calving season.

## 69 LSF DDC INDEPENDENCE 610D

BD: 1/20/16 TATTOO: 610D REG#: 3539317 HERD: DDC CAT: 100% AR

### TOP \$ ELIGIBLE

BUF CRK LANCER R017  
BUF CRK THE RIGHT KIND U199  
BUF CRK SHOSHONE R353

### 5L INDEPENDENCE 560-298Y

TC STOCKMAN 365  
5L BLACK ADINA 525-560  
5L ADINA 293-525  
LCC CHEYENNE B221L  
BIEBER ROUSE SAMURAI X22  
GHR MARITA R31

### D&D QUEEN B47

LORENZEN CHEROKEE 4602  
SANTIAM'S QUEEN U12  
SANTIAM'S PRINCESS P51

ACT BW	84
SRANCH	Top 30%
WW	Top 57%
617	\$FEEDER
PROJ YW	Top 24%
1112	DISP
	****

HERD	GRID	CED	BW	WW	YW	MILK	ME	HPG	CEM	STAY	MARB	YG	CW	REA	BFAT
144	55	9	-3.5	72	116	20	5	14	7	11	1.08	-0.01	34	0.44	0.01

WOW! WOW! WOW! Check out the huge EPD spread on this bull. He destroys the calving ease/high growth antagonisms with his top 16% CED, 15% BW, 9% WW and 7% YW. Just think of the heifers that he can produce with his top 9% HPG, 12% CEM and 30% ST. With his top 1% MB, 15% CW and 9% REA EPDs and 1% GMI you might want to retain interest in his steers.

## 70 LSF DDC INDEPENDENCE 63D

BD: 1/17/16 TATTOO: 63D REG#: 3539327 HERD: DDC CAT: 100% AR

### TOP \$ ELIGIBLE

BUF CRK LANCER R017  
BUF CRK THE RIGHT KIND U199  
BUF CRK SHOSHONE R353

### 5L INDEPENDENCE 560-298Y

TC STOCKMAN 365  
5L BLACK ADINA 525-560  
5L ADINA 293-525  
MLK CRK CUB 722  
WEBR DOC HOLLIDAY 2N  
WEBR MS DOLLY 1L

### D & D RAINY T72

LSF COMBINATION A301M  
D&D RAINY R53  
LSF RAINDANCE J1423

ACT BW	78
SRANCH	Top 23%
WW	Top 35%
588	\$FEEDER
PROJ YW	Top 25%
1076	DISP
	***

HERD	GRID	CED	BW	WW	YW	MILK	ME	HPG	CEM	STAY	MARB	YG	CW	REA	BFAT
138	52	9	-5.5	51	80	20	4	17	12	10	0.83	0.13	10	-0.13	0.04

I have a great idea. Take all three of these paternal half brothers by Independence home with you and you can achieve all new levels of calving ease and uniformity in your next calf crop. Check out the maternal calving ease and fertility that this guy brings to the table with top 2% HPG and 1% CEM. He gets it done on carcass quality as well with a top 5% MB.

### EPD Averages for Non-Parents Under Two Years of Age

95 HB	49 GM	5 CED	-2.0 BW	59 WW	90 YW	21 MILK	1 ME	11 HPG	4 CEM	10 STAY	0.46 MARB	0.02 YG	22 CW	0.12 REA	0.00 BFAT
-------	-------	-------	---------	-------	-------	---------	------	--------	-------	---------	-----------	---------	-------	----------	-----------

**71 LSF H2R PROFITBUILDER D626**

BD: 3/5/16 TATTOO: D626 REG#: 3523968 HERD: H2R CAT: 100% AR

HXC CONQUEST 4405P  
LSF TAKEOVER 9943W  
LSF WIDELOAD R5014 U8061

**H2R PROFITBUILDER B403**

BECKTON NEBULA P P707  
BROWN MS P707 Y6674  
BROWN MS MISSION STMT T6963  
LCC MARIO 1889J  
BROWN-CH ASSURANCE 3567S  
BROWN MS LADY H7566

**BROWN MS ASSURANCE Y7707**

LJC MISSION STATEMENT P27  
BROWN MS MISSION STMT W7918  
GMM MS CHEYENNE S3608

ACT BW	88	\$PROFIT	Top 3%
WW	815	\$RANCH	Top 14%
PROJ YW	1169	\$FEEDER	Top 5%
		DISP	***

HERD	GRID	CED	BW	WW	YW	MILK	ME	HPG	CEM	STAY	MARB	YG	CW	REA	BFAT
186	54	12	-2.9	75	126	19	3	15	4	17	0.93	0.2	41	0.13	0.05

Here we are 71 lots in and we have a bull with one of the best EPD tabulations in the entire sale. If you need calving ease this guy has it in spades with his top 7% CED and 23% BW. Unlike calving ease bulls in many other sales this guy is loaded to the hilt with growth as well with top 6% WW and 2% YW. Keep the heifers and retain the steers with his top 1% ST, 2% MB, 1% HBI and 1% GMI.



**72 LSF H2R PROFITBUILDER D606**

BD: 1/30/16 TATTOO: D606 REG#: 3515893 HERD: H2R CAT: 100% AR

HXC CONQUEST 4405P  
LSF TAKEOVER 9943W  
LSF WIDELOAD R5014 U8061

**H2R PROFITBUILDER B403**

BECKTON NEBULA P P707  
BROWN MS P707 Y6674  
BROWN MS MISSION STMT T6963  
LJC LANCER 806  
BROWN COMMITMENT S7206  
BROWN MS SHAZZAM P7940

**BROWN MS COMMITMENT X7537**

FEDES BIG SKY R9  
BROWN MS BIG SKY U7829  
BROWN MS IN FOCUS S7549

ACT BW	72	\$PROFIT	Top 1%
WW	742	\$RANCH	Top 3%
PROJ YW	1161	\$FEEDER	Top 3%
		DISP	***

HERD	GRID	CED	BW	WW	YW	MILK	ME	HPG	CEM	STAY	MARB	YG	CW	REA	BFAT
169	53	9	-3.2	72	109	22	3	14	0	17	1.1	0.07	30	0.05	0

You might want to start making room on your wall for your Grid Master Award if you take this stud back home with you. With his top 1% MB, 23% CW and 2% GMI he can take your herd's carcass program ahead by leaps and bounds in a hurry. Expect his progeny to press the scales down with his top 9% WW and 13% YW. You might want to keep all the daughters with his top 1% ST and 2% HBI.



LSF H2R PROFITBUILDER D606

**73 LSF AHR REDEMPTION 635D**

BD: 2/29/16 TATTOO: 635D REG#: 3536271 HERD: AHR CAT: 100% AR

BECKTON NEBULA M045  
BECKTON NEBULA P P707  
BECKTON LANA M809 EP

**BROWN JYJ REDEMPTION Y1334**

LJC MISSION STATEMENT P27  
JYJ MS JOLENE W16  
HXC JOLENE R548  
LCC CHEYENNE B221L  
GMRA LARAMIE 5110  
GMRA LAKOTA 341

**MEADO-WEST TOOTSIE**

BADLANDS MR BEEF 805  
MEADO-WEST BIANCA 103L  
PIE MISS LOGAN 722

ACT BW	96	\$PROFIT	Top 23%
WW	809	\$RANCH	Top 70%
PROJ YW	1167	\$FEEDER	Top 13%
		DISP	***

HERD	GRID	CED	BW	WW	YW	MILK	ME	HPG	CEM	STAY	MARB	YG	CW	REA	BFAT
162	52	7	-2	68	116	22	4	13	9	15	0.67	0.09	36	-0.03	-0.01

Get paid by the pound? If so, you had better take a long look at this stud. He can do worlds of good for you bottom line with a weaning weight over 800 pounds combined with growth EPDs in the top 17% WW and 7% YW. His daughters should be loaded to the hilt with fertility, calving ease and longevity with his top 23% HPG, 4% CEM and 4% ST.



LSF AHR REDEMPTION 635D

EPD Averages for Non-Parents Under Two Years of Age															
95 HB	49 GM	5 CED	-2.0 BW	59 WW	90 YW	21 MILK	1 ME	11 HPG	4 CEM	10 STAY	0.46 MARB	0.02 YG	22 CW	0.12 REA	0.00 BFAT



LSF DDC CONQUEST 69D



HXC CONQUEST 4405P

74

LSF DDC CONQUEST 69D

BD: 1/25/16 TATTOO: 69D REG#: 3539344 HERD: DDC CAT: 100% AR

TOP \$ ELIGIBLE

BKT JULIAN 7526 G  
 BECKTON JULIAN GG B571  
 BKT MARTA 9A13 JL

HXC CONQUEST 4405P

BFCK CHEROKEE CNYN 4912  
 HXC ELLIE MAY MA638  
 HXC 529E  
 5L NORSEMAN KING 2291  
 5L HOTLINE 708-6093  
 XXX MATTIE 708 HM

GIMPLD

D&D FIONA X04

LCHMN ENTERPRISE 1370H  
 D&D FIONA R54  
 LSF FIONA 881 SO 365

\$PROFIT
Top 86%
\$RANCH
Top 55%
\$FEEDER
Top 83%
DISP
★★★★

ACT BW
86
WW
549
PROJ YW
1127

HERD	GRID	CED	BW	WW	YW	MILK	ME	HPG	CEM	STAY	MARB	YG	CW	REA	BFAT
107	51	10	-1.9	62	100	21	3	6	1	11	0.61	0.01	27	0.37	0.03

Check out the calving ease to growth spread that this solid made bull offers going from a top 15% CED to a YW that ranks in the top 27% of the breed. If you are wanting to increase the end product merit of your cow herd this guy can do it by blowing apart the antagonisms between marbling and muscle with his top 18% MB and 13% REA.

**75 LSF DDC TRILOGY 615D**

BD: 1/25/16 TATTOO: 615D REG#: 3539352 HERD: DDC CAT: 100% AR

MESSMER JOSHUA 019P  
MESSMER PACKER S008  
MESSMER MILLIE 124P

**GMRA TRILOGY 0226**

GLACIER CHATEAU 744  
GMRA LAKOTA 625



GMRA LAKOTA 380  
MESSMER JUDGE 36N  
D&D ACCELERATOR 92W  
D & D AMBROSIA T71

**D&D SUNBURST Y115**

DBL TREE ALFA ROMEO 442GD  
DBL TREE SUNBURST-910  
DIG SUNBURST 7146K

ACT BW	85	\$PROFIT	Top 82%
WW	529	\$RANCH	Top 71%
PROJ YW	1176	\$FEEDER	Top 79%
		DISP	★★

HERD	GRID	CED	BW	WW	YW	MILK	ME	HPG	CEM	STAY	MARB	YG	CW	REA	BFAT
168	50	9	-2.7	57	85	16	3	15	9	15	0.65	-0.02	17	0.33	0.02

How about that HerdBuilder Index on this stud. If you want to produce females that are loaded with fertility, calving ease and stay in the herd for years this guy can do it with his top 6% HPG, 3% CEM and 3% ST. He gets it done on carcass merit as well with top 14% MB and 17% REA. Plus, you get all of this in a calving ease package that ranks in the top 15% CED and 25% BW.



LSF DDC TRILOGY 615D

**76 LSF JKK TYSON 6775D**

BD: 2/16/16 TATTOO: 6775D REG#: 3564618 HERD: JKK CAT: 100% AR

BUF CRK LANCER R017  
MUSHRUSH IMPRESSIVE CA U236  
MUSHRUSH MADAM LT R265

**LSF SRR TYSON 3025A**

MESSMER PACKER S008  
LSF JIBA R5009 W9247  
LSF JIBA K1004 R5009  
SIX MILE UNLEADED 561U  
SUTH UNLEADED 140X  
SUTH CANYON SKY 7043



ACT BW	72	\$PROFIT	Top 23%
WW	631	\$RANCH	Top 1%
PROJ YW	1234	\$FEEDER	Top 62%
		DISP	★★★

**SRR POLY 3100-1134**

FRITZ GRAND OSCAR 8014  
SRR POLY 1134-843  
SRR POLY 843

HERD	GRID	CED	BW	WW	YW	MILK	ME	HPG	CEM	STAY	MARB	YG	CW	REA	BFAT
106	52	9	-5.6	63	97	22	2	12	5	9	0.52	0.04	19	0.08	0.01

Check out the length of top in this rascal. If you want to put some stretch into your next set of calves he can get it done for you. Take this stud back home and next calving season should be a breeze for both you and your heifers with his top 16% CED and 3% BW EPDs. Even with this much calving ease he still offers plenty of performance with a top 33% ranking for both WW and YW.



LSF JKK TYSON 6775D

**77 LSF H2R PREMIER D625**

BD: 2/27/16 TATTOO: D625 REG#: 3515906 HERD: H2R CAT: 100% AR

**TOP \$ ELIGIBLE**

BECKTON NEBULA M045  
BECKTON NEBULA P P707  
BECKTON LANA M809 EP

**BROWN PREMIER X7876**

5L DESTINATION 893-6215  
BROWN MS DESTINATION T7664  
BROWN MS JULIA M7788  
LJC LANCER 806  
LJC MISSION STATEMENT P27  
LJC HANNAH 106



ACT BW	88	\$PROFIT	Top 1%
WW	737	\$RANCH	Top 15%
PROJ YW	1250	\$FEEDER	Top 1%
		DISP	★★★

**BROWN MS MISSION STMT X7559**

PIE GRIDMASTER 589  
DUNN JIBA 0704  
LCC JIBA MA970

HERD	GRID	CED	BW	WW	YW	MILK	ME	HPG	CEM	STAY	MARB	YG	CW	REA	BFAT
169	54	6	-1.5	71	109	10	1	14	5	16	1	-0.13	33	0.46	-0.03

There is big time profit potential in this bull. think how fast he can pay for himself with just the extra pounds that he can produce with his growth EPDs that rank in the top 12% WW and 13% YW. His daughters should be profit centers for years to come with his top 10% HPG, 2% ST and 2% HBI. Expect his steers to be grid toppers with his top 1% MB, 9% YG, 16% CW, 8% REA, 10% FT and 2% GMI.



LSF H2R PREMIER D625

EPD Averages for Non-Parents Under Two Years of Age

95 HB	49 GM	5 CED	-2.0 BW	59 WW	90 YW	21 MILK	1 ME	11 HPG	4 CEM	10 STAY	0.46 MARB	0.02 YG	22 CW	0.12 REA	0.00 BFAT
-------	-------	-------	---------	-------	-------	---------	------	--------	-------	---------	-----------	---------	-------	----------	-----------

# LUDVIGSON STOCK FARMS • RED ANGUS YEARLING BULLS

## 78 LSF JKK PREMIER 6777D

BD: 2/19/16 TATTOO: 6777D REG#: 3564620 HERD: JKK CAT: 100% AR

BECKTON NEBULA M045  
BECKTON NEBULA P P707  
BECKTON LANA M809 EP

### BROWN PREMIER X7876

5L DESTINATION 893-6215  
BROWN MS DESTINATION T7664  
BROWN MS JULIA M7788  
BECKTON JULIAN GG B571  
HXC CONQUEST 4405P  
HXC ELLIE MAY MA638

### SRR KIMA 303-1152

BASIN EXT 7455  
SRR KIMA 1152-728  
SRR KIMA 728-104

\$PROFIT	
ACT BW	Top 6%
90	\$BRANCH
WW	Top 20%
669	\$FEEDER
PROJ YW	Top 8%
1261	DISP
	***

HERD	GRID	CED	BW	WW	YW	MILK	ME	HPG	CEM	STAY	MARB	YG	CW	REA	BFAT
149	53	7	-2.4	75	118	11	2	13	6	13	0.76	0.07	36	0.04	-0.01

You have to love the performance that these Premier sons offer. This stud earns a 112 weaning weight ratio to go along with growth EPDs in the top 6% for both WW and YW. Keep as many females as possible out of this guy because they should be money making machines with his top 18% HPG, 24% CEM and 9% ST. With top 7% MB and 4% GMI his steers should be grid top-pers.

## 79 LSF JKK PREMIER 6760D

BD: 1/28/16 TATTOO: 6760D REG#: 3564589 HERD: JKK CAT: 100% AR

BECKTON NEBULA M045  
BECKTON NEBULA P P707  
BECKTON LANA M809 EP

### BROWN PREMIER X7876

5L DESTINATION 893-6215  
BROWN MS DESTINATION T7664  
BROWN MS JULIA M7788  
RED SVR GANGSTER 14S  
RED NORTHLINE FAT TONY 605U  
RED NORTHLINE RUBY 0305N

### SRR FLO-MARIE 398

LCHMN HEVN'S SAKE 1002F  
SRR FLO-MARIE 150-185  
LARSON FLO-MARIE 185

\$PROFIT	
ACT BW	Top 6%
60	\$BRANCH
WW	Top 2%
631	\$FEEDER
PROJ YW	Top 21%
1150	DISP
	***

HERD	GRID	CED	BW	WW	YW	MILK	ME	HPG	CEM	STAY	MARB	YG	CW	REA	BFAT
135	52	8	-5	57	89	16	-2	15	8	11	0.75	-0.04	16	0.14	-0.01

Want to produce females that are low input with tremendous fertility and calving ease? If so, you might want to load this guy up with hi top 31% ME, 5% HPG and 6% ST. Throw in the dam being from one of the highest producing cow families in the breed and you really can have something. An added bonus is the calving ease he offers with top 24% CED and 5% BW.

## 80 LSF RHO REDEMPTION 608

BD: 2/28/16 TATTOO: 608 REG#: 3523745 HERD: RHO CAT: 100% AR

BECKTON NEBULA M045  
BECKTON NEBULA P P707  
BECKTON LANA M809 EP

### BROWN JYJ REDEMPTION Y1334

LJC MISSION STATEMENT P27  
JYJ MS JOLENE W16  
HXC JOLENE R548  
LAFLINS CUTTING EDGE 2075  
HAYCOW CUTTING EDGE 055  
HAYCOW 370 PRINCESS 5002

### SLGN MILLIE B52

VGW TOP PICK 130  
MESSMER MILLIE 124P  
MESSMER MILLIE 9416

\$PROFIT	
ACT BW	Top 40%
81	\$BRANCH
WW	Top 46%
685	\$FEEDER
PROJ YW	Top 40%
1178	DISP
	***

HERD	GRID	CED	BW	WW	YW	MILK	ME	HPG	CEM	STAY	MARB	YG	CW	REA	BFAT
150	53	13	-3.3	58	100	23	0	13	4	13	0.73	0.02	25	0.11	0

Here we are 80 lots in and we are still bringing you herd bull quality bulls. Take one look at this guy and it's easy to see why the Redemptions are so popular. If you need a calving ease bull he should definitely be on your list with his top 3% CED and 18% BW. His daughters should be world beaters with his top 15% HPG and 12% ST. Notice that top 9% MB EPD as well.

## 81 LSF JKK REDEMPTION 6759D

BD: 1/27/16 TATTOO: 6759D REG#: Pending HERD: JKK CAT: 100% AR

BECKTON NEBULA M045  
BECKTON NEBULA P P707  
BECKTON LANA M809 EP

### BROWN JYJ REDEMPTION Y1334

LJC MISSION STATEMENT P27  
JYJ MS JOLENE W16  
HXC JOLENE R548  
SIX MILE UNLEADED 561U  
SUTH UNLEADED 140X  
SUTH CANYON SKY 7043

### SRR DORY-JIBA 396-0173

BASIN ELIXIR R18  
SRR DORY-JIBA 0173-440  
SRR DORY JIBA 440-784

\$PROFIT	
ACT BW	NA
	\$BRANCH
WW	NA
	\$FEEDER
PROJ YW	NA
1112	DISP
	****

HERD	GRID	CED	BW	WW	YW	MILK	ME	HPG	CEM	STAY	MARB	YG	CW	REA	BFAT
131	52	12	-4.9	51	86	21	-1	11	7	11	0.46	-0.02	14	-0.03	-0.02

## 82 LSF JKK REDEMPTION 6757D

BD: 1/27/16 TATTOO: 6757D REG#: 3564587 HERD: JKK CAT: 100% AR

BECKTON NEBULA M045  
BECKTON NEBULA P P707  
BECKTON LANA M809 EP

### BROWN JYJ REDEMPTION Y1334

LJC MISSION STATEMENT P27  
JYJ MS JOLENE W16  
HXC JOLENE R548  
RED CROWFOOT OLE'S OSCAR  
FRITZ GRAND OSCAR 8014  
FRITZ REBALS 6016

### SRR DINA 3187-637

BIEBER MAKE MIMI 7249  
SRR DINA 637-D1057  
LCHMN DINA D1057

\$PROFIT	
ACT BW	Top 30%
73	\$BRANCH
WW	Top 28%
592	\$FEEDER
PROJ YW	Top 36%
1128	DISP
	**

HERD	GRID	CED	BW	WW	YW	MILK	ME	HPG	CEM	STAY	MARB	YG	CW	REA	BFAT
152	52	12	-4.7	55	96	25	3	10	9	13	0.58	0	21	0.12	0

If you have not got your heifer bull bought yet, now is your chance. Take this dude home and get reacquainted with your pillow next calving season with his top 6% CED and 7% BW. His daughters should be easy calving as well and be profit centers in your herd for years to come with his top 5% CEM and 10% ST. No wonder he ranks in the top 5% for HBI.



LSF JKK REDEMPTION 6759D

### EPD Averages for Non-Parents Under Two Years of Age

95 HB 49 GM 5 CED -2.0 BW 59 WW 90 YW 21 MILK 1 ME 11 HPG 4 CEM 10 STAY 0.46 MARB 0.02 YG 22 CW 0.12 REA 0.00 BFAT



LSF JFC ROLLIN DEEP 667

**83 LSF JKK REDEMPTION 6752D**  
 BD: 1/24/16 TATTOO: 6752D REG#: 3564583 HERD: JKK CAT: 100% AR

BECKTON NEBULA M045  
 BECKTON NEBULA P P707  
 BECKTON LANA M809 EP  
 LJC MISSION STATEMENT P27  
 JYJ MS JOLENE W16  
 HXC JOLENE R548  
 RED CROWFOOT OLE'S OSCAR  
 FRITZ GRAND OSCAR 8014  
 FRITZ REBALS 6016  
 SRR TOP RIDGE 217  
 SRR COPPER QUEEN 500-2001  
 FORSTER COPPRQUEEN 2011

**BROWN JYJ REDEMPTION Y1334**

**SRR COPPER QUEEN 3204-500**

ACT BW	69
WW	624
PROJ YW	1144

SPROFIT	Top 19%
SRANCH	Top 21%
SFEEDER	Top 27%
DISP	***

HERD	GRID	CED	BW	WW	YW	MILK	ME	HPG	CEM	STAY	MARB	YG	CW	REA	BFAT
142	53	11	-5.1	54	93	22	0	11	9	11	0.73	0.03	19	0.03	0

Take a look at this deep and soggy made dude. You have to love the look of this guy. You have to love his calving ease even more with EPDs that rank in the top 7% CED and 5% BW. Keep every daughter you can out of this guy as they should be easy calving and be able to stay in the herd with his top 3% CEM and 26% ST. He gets it done on carcass quality as well with top 9% MB.

**84 LSF JFC ROLLIN DEEP 667**  
 BD: 3/25/16 TATTOO: 667 REG#: 3534536 HERD: JFC CAT: 100% AR

**TOP \$ ELIGIBLE**

BIEBER ROUGH RIDER 10712  
 BIEBER ROOSEVELT W384  
 BIEBER SHEBA 9602  
 BIEBER BOONE 8000  
 BIEBER TILLY 399W  
 BIEBER TILLY 303S  
 RD TER-RON FULLY LOADED 540R  
 RED 6 MILE FULL THROTTLE171T  
 RED SIX MILE WITZEL 360J  
 BJR MONU 4X-303  
 BEAVER BROOK PHOENIX 244P  
 RED ACRES MILLIE 7M

**BIEBER ROLLIN DEEP Y118**

**JFCC LADY IN RED 067**

ACT BW	76
WW	711
PROJ YW	1169

SPROFIT	Top 42%
SRANCH	Top 37%
SFEEDER	Top 46%
DISP	***

HERD	GRID	CED	BW	WW	YW	MILK	ME	HPG	CEM	STAY	MARB	YG	CW	REA	BFAT
83	50	3	-0.8	69	110	18	1	12	2	8	0.42	0.15	34	0.02	0.02

If you are looking for an outcross bull that offers tremendous performance this guy needs to be on your list. He offers a superb actual performance spread with ratios of only 93 for birth and an impressive 107 for weaning. His growth EPDs that rank in the top 16% for WW and 13% YW he can pay for himself in a hurry.

EPD Averages for Non-Parents Under Two Years of Age															
95 HB	49 GM	5 CED	-2.0 BW	59 WW	90 YW	21 MILK	1 ME	11 HPG	4 CEM	10 STAY	0.46 MARB	0.02 YG	22 CW	0.12 REA	0.00 BFAT



LSF DDC CONQUEST 65D

**85 LSF JKK TAKEOVER 6765D**  
 BD: 1/30/16 TATTOO: 6765D REG#: 3564594 HERD: JKK CAT: 100% AR

BECKTON JULIAN GG B571  
 HXC CONQUEST 4405P  
 HXC ELLIE MAY MA638

**LSF TAKEOVER 9943W**

MESSMER PACKER S008  
 LSF WIDELOAD R5014 U8061  
 LSF WIDELOAD N3195 R5014  
 RED HILL B571 JULIAN 84S  
 BUF CRK SPITN IMAGE X014  
 BUF CRK BLOCKANNA U227

**SRR VRDALE 38-1156**

FRITZ GRAND OSCAR 8014  
 SRR VRDALE 1156  
 SRR VRDALE 7013-331

	<b>\$PROFIT</b>
	<b>Top 8%</b>
<b>ACT BW</b>	<b>\$RANCH</b>
<b>79</b>	<b>Top 3%</b>
<b>WW</b>	<b>\$FEEDER</b>
<b>633</b>	<b>Top 23%</b>
<b>PROJ YW</b>	<b>DISP</b>
<b>1119</b>	<b>***</b>

HERD	GRID	CED	BW	WW	YW	MILK	ME	HPG	CEM	STAY	MARB	YG	CW	REA	BFAT
117	51	9	-2.6	57	88	25	-2	9	7	11	0.7	-0.02	19	0.29	0.02

This guy looks like a body builder he's so heavily muscled. You have to love the moderation he offers, if you need to moderate that frame size on your herd he can do it. Check out those carcass EPDs. He can put out a heck of a set of steers with his top 11% MB and 20% REA. Can you imagine what this guy could do on a set of Continental heifers?

**86 LSF DDC CONQUEST 65D**  
 BD: 1/24/16 TATTOO: 65D REG#: 3539353 HERD: DDC CAT: 100% AR

BKT JULIAN 7526 G  
 BECKTON JULIAN GG B571  
 BKT MARTA 9A13 JL

**HXC CONQUEST 4405P**

BFCK CHEROKEE CNYN 4912  
 HXC ELLIE MAY MA638  
 HXC 529E  
 VGW KING OF THE WEST  
 5L NORSEMAN KING 2291  
 NORSEMAN 1312 PJM

**D&D MISS FOREVER Y17**

B C MARATHON 7022  
 LAGRAND MISS FOREVER 6151  
 ROTH MISS FOREVER 2228

	<b>\$PROFIT</b>
	<b>Top 34%</b>
<b>ACT BW</b>	<b>\$RANCH</b>
<b>64</b>	<b>Top 13%</b>
<b>WW</b>	<b>\$FEEDER</b>
<b>512</b>	<b>Top 52%</b>
<b>PROJ YW</b>	<b>DISP</b>
<b>1106</b>	<b>***</b>

HERD	GRID	CED	BW	WW	YW	MILK	ME	HPG	CEM	STAY	MARB	YG	CW	REA	BFAT
113	53	16	-5.6	51	89	25	-3	8	-2	10	0.65	-0.07	16	0.64	0.05

Say hello to your heifer's new best friend. With his combination of 63 pound actual birth weight with a 78 ratio and calving ease EPDs that rank in the top 1% CED and 3% BW, your calving season next year should be a breeze. He can also help to put downward pressure on your inputs as well with a top 23% ME. Check out his carcass 15% MB, 20% YG and 2% REA.

EPD Averages for Non-Parents Under Two Years of Age															
95 HB	49 GM	5 CED	-2.0 BW	59 WW	90 YW	21 MILK	1 ME	11 HPG	4 CEM	10 STAY	0.46 MARB	0.02 YG	22 CW	0.12 REA	0.00 BFAT

# LUDVIGSON STOCK FARMS • RED ANGUS YEARLING BULLS

## 87 LSF H2R PROFITBUILDER D608

BD: 1/31/16 TATTOO: D608 REG#: 3515895 HERD: H2R CAT: 100% AR

HXC CONQUEST 4405P  
LSF TAKEOVER 9943W  
LSF WIDELOAD R5014 U8061

### H2R PROFITBUILDER B403



BECKTON NEBULA P P707  
BROWN MS P707 Y6674  
LJC LANCER 806  
BROWN COMMITMENT S7206  
BROWN MS SHAZZAM P7940

### BROWN MS COMMITMENT X7537

FEDES BIG SKY R9  
BROWN MS BIG SKY U7829  
BROWN MS IN FOCUS S7549

\$PROFIT
Top 2%
\$RANCH
Top 18%
\$FEEDER
725
Top 2%
DISP
1158
***

HERD	GRID	CED	BW	WW	YW	MILK	ME	HPG	CEM	STAY	MARB	YG	CW	REA	BFAT
161	53	7	-1.8	74	115	22	3	11	0	17	1.06	0.08	36	0.18	0.01

WOW! Check out the top 1% MB EPD on this stud. Did you really expect anything different by crossing Profitbuilder on Commitment? It's pretty easy to see how this guy earns a GridMaster Index in the top 2% of the breed. He offers tremendous performance as well with growth EPD in the top 7% for both WW and YW. Keep every daughter with his top 1% ST and 3% HBI.

## 88 LSF DDC INDEPENDENCE 611D

BD: 2/5/16 TATTOO: 611D REG#: 3539365 HERD: DDC CAT: 100% AR

### TOP \$ ELIGIBLE

BUF CRK LANCER R017  
BUF CRK THE RIGHT KIND U199  
BUF CRK SHOSHONE R353

### 5L INDEPENDENCE 560-298Y



TC STOCKMAN 365  
5L BLACK ADINA 525-560  
5L ADINA 293-525  
HXC HEMI 4400P  
HXC JACKHAMMER 8800U  
HXC JOLENE 301N

### D&D RAINY Z27

D&D REDLINE 62S  
D&D RAINY X014  
D & D RAINY U85

\$PROFIT
Top 5%
\$RANCH
Top 37%
\$FEEDER
603
Top 4%
DISP
1208
***

HERD	GRID	CED	BW	WW	YW	MILK	ME	HPG	CEM	STAY	MARB	YG	CW	REA	BFAT
125	54	9	-1.5	82	139	16	0	10	8	9	0.62	-0.01	50	0.45	-0.01

This has to be one of the highest performance Independence sons in the country. If you are looking to put pounds on the ground, he can do it with incredible growth EPDs that rank in the top 2% WW and 1% YW. Even with all of this elite performance he still offers calving ease with a top 16% CED. Check out the carcass on this guy with his top 17% MB, 1% CW and 8% REA.

## 89 LSF JKK PREMIER 6764D

BD: 1/29/16 TATTOO: 6764D REG#: 3564593 HERD: JKK CAT: 100% AR

BECKTON NEBULA M045  
BECKTON NEBULA P P707  
BECKTON LANA M809 EP

### BROWN PREMIER X7876



5L DESTINATION 893-6215  
BROWN MS DESTINATION T7664  
BROWN MS JULIA M7788  
PAR ULTIMATE DIRECTION 1018R  
SRR RIGHT DIRECTION  
GMRA LAKOTA 027

### SRR BLOCKANNA 3104-499

LARSON CHAPPARRAL 986  
SRR BLOCKANA 499-179  
SRR BLOCKANA 179

\$PROFIT
Top 7%
\$RANCH
Top 2%
\$FEEDER
62
Top 22%
DISP
672
DISP
1027
**

HERD	GRID	CED	BW	WW	YW	MILK	ME	HPG	CEM	STAY	MARB	YG	CW	REA	BFAT
136	52	9	-5.3	65	102	13	1	15	7	11	0.51	0	23	0.04	-0.02

Here is one of the most attractive made bulls in the sale. If you are looking for a front pasture bull that you can show off to your neighbors this is him. His genotype really shines as well with a great combination of calving ease and performance with his top 20% CED, 4% BW, 27% WW and 23% YW. He's a female maker as well with top 8% HPG and 12% CEM.

## 90 LSF SRR REDEMPTION 6038D

BD: 1/15/16 TATTOO: 6038D REG#: 3531777 HERD: SRR CAT: 100% AR

BECKTON NEBULA M045  
BECKTON NEBULA P P707  
BECKTON LANA M809 EP

### BROWN JYJ REDEMPTION Y1334



LJC MISSION STATEMENT P27  
JYJ MS JOLENE W16  
HXC JOLENE R548  
BIEBER MAKE MIMI 7249  
FEDES BIG SKY R9  
FEDES LAKINA 310

### LSF RED FAY N3087 T7066

BFCK CHEROKEE CNYN 4912  
LSF RED FAY J1426 N3087  
LSF RED FAY 3502 J1426

\$PROFIT
Top 11%
\$RANCH
Top 25%
\$FEEDER
72
Top 13%
DISP
588
DISP
993
***

HERD	GRID	CED	BW	WW	YW	MILK	ME	HPG	CEM	STAY	MARB	YG	CW	REA	BFAT
125	53	12	-5.3	55	95	22	4	14	1	11	0.55	-0.04	19	0.18	-0.01

HERD BULL ALERT! We are getting near the end of the sale and yes, we are still offering you herd bulls. When you study this complete stud you have to love the moderation and muscle that he brings to the table. Take a look at his outstanding GridMaster Index that ranks in the top 4% and imagine the steers that he can produce when you combine this with his excellent phenotype.

## 91 LSF JKK REDEMPTION 6773D

BD: 2/14/16 TATTOO: 6773D REG#: 3564616 HERD: JKK CAT: 100% AR

BECKTON NEBULA M045  
BECKTON NEBULA P P707  
BECKTON LANA M809 EP

### BROWN JYJ REDEMPTION Y1334



LJC MISSION STATEMENT P27  
JYJ MS JOLENE W16  
HXC JOLENE R548  
K2 RED ALLIANCE 1602 73  
RED WHEATLAND 1235  
RED VALORIE 4258

### SRR IONE 3157-879

SRR TOP RIDGE 217  
SRR IONE 879-309  
SRR IONE 309-131

\$PROFIT
Top 32%
\$RANCH
Top 45%
\$FEEDER
80
Top 31%
DISP
590
DISP
1189
***

HERD	GRID	CED	BW	WW	YW	MILK	ME	HPG	CEM	STAY	MARB	YG	CW	REA	BFAT
142	52	10	-2.3	66	108	20	1	10	6	13	0.79	0.07	31	0.01	0

I hope that you are loading up as many of these Redemptions as possible. Check out that super spread between calving ease and growth with his top 14% CED, 32% BW, 22% WW and 15% YW. If you are looking to build a cow herd he can do it with his top 18% CEM and 14% ST. If you need carcass quality he has you covered there with top 6% MB.



BROWN JYJ REDEMPTION Y1334

### EPD Averages for Non-Parents Under Two Years of Age

95 HB	49 GM	5 CED	-2.0 BW	59 WW	90 YW	21 MILK	1 ME	11 HPG	4 CEM	10 STAY	0.46 MARB	0.02 YG	22 CW	0.12 REA	0.00 BFAT
-------	-------	-------	---------	-------	-------	---------	------	--------	-------	---------	-----------	---------	-------	----------	-----------



LSF JKK REDEMPTION 6766D

**92 LSF JKK REDEMPTION 6766D**  
 BD: 1/30/16 TATTOO: 6766D REG#: 3564595 HERD: JKK CAT: 100% AR

**TOP \$ ELIGIBLE** BECKTON NEBULA M045  
 BECKTON NEBULA P P707  
 BECKTON LANA M809 EP

**BROWN JYJ REDEMPTION Y1334**  
 LJC MISSION STATEMENT P27  
 JYJ MS JOLENE W16

**GMPLD** HXC JOLENE R548  
 BECKTON WARRIOR R667 CL  
 VGW WARRIOR 969  
 VGW 400-FIREFLY 0449

**SRR VICTORIA JOAN 3172-6028**  
 FISCHERS TREND 3595  
 SRR VICTORIA JOAN 6028-237  
 SRR VICTORIA JOAN 237-711

ACT BW	77	\$PROFIT	Top 55%
SRANCH		\$FEEDER	Top 58%
WW	596	DISP	Top 51%
PROJ YW	1133		★★★★

HERD	GRID	CED	BW	WW	YW	MILK	ME	HPG	CEM	STAY	MARB	YG	CW	REA	BFAT
144	52	10	-2.3	63	111	21	0	12	4	13	0.6	0.06	33	0.11	0

I believe it will be pretty easy for you to find this dark red and attractive made bull out in the pens. I also believe that you will be glad you got this guy home come next calving season with his top 14% CED and 32% BW. On top of calving ease he also offers great performance with growth EPDs in the top 31% WW and 11% YW. Check out that carcass with top 19% MB and 15% CW.



LSF JKK REDEMPTION 6768D

**93 LSF JKK REDEMPTION 6768D**  
 BD: 2/1/16 TATTOO: 6768D REG#: 3564597 HERD: JKK CAT: 100% AR

**TOP \$ ELIGIBLE** BECKTON NEBULA M045  
 BECKTON NEBULA P P707  
 BECKTON LANA M809 EP

**BROWN JYJ REDEMPTION Y1334**  
 LJC MISSION STATEMENT P27  
 JYJ MS JOLENE W16

**GMPLD** HXC JOLENE R548  
 MESSMER PACKER S008  
 LAUBACH PACKER 1041  
 LAUBACH JUANA 561

**SRR DORY JIBA 3171-7041**  
 FISCHERS TREND 3595  
 SRR DORY JIBA 7041-320  
 SRR DORY JIBA 320-930

ACT BW	97	\$PROFIT	Top 50%
SRANCH		\$FEEDER	Top 72%
WW	640	DISP	Top 39%
PROJ YW	1104		★★★

HERD	GRID	CED	BW	WW	YW	MILK	ME	HPG	CEM	STAY	MARB	YG	CW	REA	BFAT
140	51	7	-0.5	72	119	21	3	11	5	14	0.38	0.03	40	0.23	-0.01

If you get paid by the pound you are definitely in the right spot. This bull offers worlds of pay weight with his combination of 102 weaning ratio and growth EPDs in the top 10% WW and 5% YW. Expect this guy's daughters to be around for a long time with his top 7% ST. Stop throwing away profit with light carcasses, let this bull's top 5% CW get you where you need to be.



LSF JKK REDEMPTION 6778D

**94 LSF JKK REDEMPTION 6778D**  
 BD: 2/19/16 TATTOO: 6778D REG#: 3564621 HERD: JKK CAT: 100% AR

**TOP \$ ELIGIBLE** BECKTON NEBULA M045  
 BECKTON NEBULA P P707  
 BECKTON LANA M809 EP

**BROWN JYJ REDEMPTION Y1334**  
 LJC MISSION STATEMENT P27  
 JYJ MS JOLENE W16

**GMPLD** HXC JOLENE R548  
 THRA 2A JULESBURG 207S ET  
 CHOAT JULESBURG X56  
 RIDGE SHEILA 378-6108

**SRR JOAN 337-L1121**  
 SRR JUDGE 987  
 LAUBACH JOAN 1121  
 LAUBACH JOAN 8109

ACT BW	82	\$PROFIT	Top 28%
SRANCH		\$FEEDER	Top 35%
WW	643	DISP	Top 31%
PROJ YW	1114		★★★★

HERD	GRID	CED	BW	WW	YW	MILK	ME	HPG	CEM	STAY	MARB	YG	CW	REA	BFAT
140	52	9	-2.5	67	109	21	-3	11	5	13	0.69	-0.02	31	0.25	-0.01

We are starting to run short on Redemptions in this sale, if you want one now is your chance. Combine his 107 weaning weight ratio with growth EPDs in the top 19% WW and 13% YW and this guy can pay for himself in a hurry with the extra pounds that he can produce. His steers should be superb with his top 12% MB, 19% CW and 25% REA.

EPD Averages for Non-Parents Under Two Years of Age															
95 HB	49 GM	5 CED	-2.0 BW	59 WW	90 YW	21 MILK	1 ME	11 HPG	4 CEM	10 STAY	0.46 MARB	0.02 YG	22 CW	0.12 REA	0.00 BFAT

# LUDVIGSON STOCK FARMS • RED ANGUS YEARLING BULLS

## 95 LSF H2R PROFITBUILDER D614

BD: 2/8/16 TATTOO: D614 REG#: 3515884 HERD: H2R CAT: 100% AR

HXC CONQUEST 4405P  
LSF TAKEOVER 9943W  
LSF WIDELOAD R5014 U8061

### H2R PROFITBUILDER B403

BECKTON NEBULA P P707  
BROWN MS P707 Y6674  
BROWN MS MISSION STMT T6963  
HXC HEMI 4400P  
HXC JACKHAMMER 8800U  
HXC JOLENE 301N

### H2R J.H. HOBO A263

BROWN-CH CHEROKEE 3570S  
TPW HOBO CH CHERO X33  
BROWN MS PRINCESS K7666

ACT BW	84	\$PROFIT	Top 6%
WW	698	\$BRANCH	Top 11%
PROJ YW	1175	\$FEEDER	Top 12%
		DISP	***

HERD	GRID	CED	BW	WW	YW	MILK	ME	HPG	CEM	STAY	MARB	YG	CW	REA	BFAT
165	53	11	-4.5	66	107	17	3	10	4	16	0.83	0.05	27	0.32	0.03

This bull's combination of a low 93 ratio at birth combined with calving ease EPDs in the top 10% CED and 8% BW should ensure both you and your heifers a peaceful calving season next year. With performance EPDs in the top 22% WW and 16% YW he offers main herd type growth. You might want to keep every daughter and grid every steer with his top 2% ST and 5% MB.

## 96 LSF AHR NEW DIRECTION 603D

BD: 12/31/15 TATTOO: 603D REG#: 3536252 HERD: AHR CAT: 100% AR

MYTTY IN FOCUS  
ANDRAS IN FOCUS B152  
ANDRAS PINETA B91

### ANDRAS NEW DIRECTION R240

MORGANS DIRECTION 111 9901  
ANDRAS KURUBA B111  
ANDRAS KURUBA B71  
BECKTON NEBULA P P707  
BROWN JYJ REDEMPTION Y1334  
JYJ MS JOLENE W16

### AAHR TOOTSIE 724T 4023B

GMRA LARAMIE 5110  
MEADO-WEST TOOTSIE  
MEADO-WEST BIANCA 103L

ACT BW	70	\$PROFIT	Top 33%
WW	639	\$BRANCH	Top 15%
PROJ YW	1018	\$FEEDER	Top 49%
		DISP	***

HERD	GRID	CED	BW	WW	YW	MILK	ME	HPG	CEM	STAY	MARB	YG	CW	REA	BFAT
105	53	9	-4.1	59	101	28	-1	12	8	8	0.81	0.08	24	0.06	0.02

If you want to produce grid topping steers and maybe win one of those coveted Grid Master Awards from the Red Angus Association you had better load up this dark red stud with his top 5% MB and 3% GridMaster Index. Check out his calving ease with top 20% CED and 11% BW. He can put the fertility and maternal calving ease in them as well with top 25% HPG and 10% CEM.

## 97 LSF RHO LEGEND 607

BD: 2/29/16 TATTOO: 607 REG#: 3523744 HERD: RHO CAT: 100% AR

### TOP \$ ELIGIBLE

BECKTON EPIC K F075  
BECKTON EPIC R397 K  
BECKTON KIT F468 JL

### BROWN BLW LEGEND A1965

BECKTON NEBULA P P707  
HXC PATRICIA ROSE 102Y  
HXC 502R  
BRYLOR FORT ROCK 68W  
BRYLOR JKC FORT KNOX 100Y  
RED BRYLOR BONITA 66K

### RED BRYLOR 46T JUANITA 55A

RED FINE LINE MULBERRY 26P  
RED BRYLOR JUANITA 46T  
RED BRYLOR JUANITA 18P

ACT BW	107	\$PROFIT	Top 49%
WW	712	\$BRANCH	Top 38%
PROJ YW	1234	\$FEEDER	Top 54%
		DISP	**

HERD	GRID	CED	BW	WW	YW	MILK	ME	HPG	CEM	STAY	MARB	YG	CW	REA	BFAT
126	52	5	1.4	70	122	17	-9	15	5	11	0.65	0.08	45	0.31	0.02

Want to put some stretch into your next calf crop and give them that extra rib look? If so take this long bodied bull home and reap the rewards. He will put the pounds in them as well with super growth EPDs in the top 13% WW and 4% YW. He can put downward pressure on your inputs as well with top 3% ME. Check out that carcass with top 14% MB, 2% CW and 18% REA.



*LSF RHO LEGEND 607*

## 98 LSF DDC LEGEND 66D

BD: 2/12/16 TATTOO: 66D REG#: 3539363 HERD: DDC CAT: 100% AR

BECKTON EPIC R397 K  
LSF SAGA 1040Y  
LSF MINOLA T7172 W9041

### LSF SRR LEGEND 3110A

MESSMER PACKER S008  
LSF CRYSTAL LA394 Y1401  
LSF CRYSTAL G1382 LA394  
BECKTON JULIAN GG B571  
HXC CONQUEST 4405P  
HXC ELLIE MAY MA638

### D&D FIONA Z25

5L HOTLINE 708-6093  
D&D FIONA X04  
D&D FIONA R54

ACT BW	70	\$PROFIT	Top 28%
WW	547	\$BRANCH	Top 9%
PROJ YW	1139	\$FEEDER	Top 49%
		DISP	***

HERD	GRID	CED	BW	WW	YW	MILK	ME	HPG	CEM	STAY	MARB	YG	CW	REA	BFAT
131	52	12	-5.1	54	88	21	2	8	4	12	0.56	-0.01	15	0.34	0.03

Check out the muscle on this stud. How often do you find a sure fire heifer bull with a 68 pound actual birth weight and 85 ratio as well as top 7% CED and 5% BW EPDs have this much muscle? I can assure you it's not often. I would advise you to keep as many females as possible and retain interest in all of the steers out of him with his top 17% ST, 24% MB and 15% REA.



*LSF DDC LEGEND 66D*

### EPD Averages for Non-Parents Under Two Years of Age

95 HB	49 GM	5 CED	-2.0 BW	59 WW	90 YW	21 MILK	1 ME	11 HPG	4 CEM	10 STAY	0.46 MARB	0.02 YG	22 CW	0.12 REA	0.00 BFAT
-------	-------	-------	---------	-------	-------	---------	------	--------	-------	---------	-----------	---------	-------	----------	-----------

# LUDVIGSON STOCK FARMS • RED ANGUS YEARLING BULLS



**LSF RHO INDEPENDENCE 604**

**99 LSF RHO INDEPENDENCE 604**  
 BD: 2/22/16 TATTOO: 604 REG#: 3523741 HERD: RHO CAT: 100% AR

BUF CRK LANCER R017  
 BUF CRK THE RIGHT KIND U199  
 BUF CRK SHOSHONE R353

**5L INDEPENDENCE 560-298Y**  
 TC STOCKMAN 365  
 5L BLACK ADINA 525-560  
 5L ADINA 293-525  
 RED COMPASS MULBERRY 449M  
 RED FINE LINE MULBERRY 26P  
 RED DUS FAYETTE 8G

**BIEBER MELLSSIE 308W**  
 VGW RAMBLER 1000  
 BIEBER MELLSSIE 8337  
 BIEBER MELLSSIE 6773

ACT BW	88
SRANCH	Top 33%
WW	\$FEEDER
685	Top 15%
PROJ YW	DISP
1165	★★

HERD	GRID	CED	BW	WW	YW	MILK	ME	HPG	CEM	STAY	MARB	YG	CW	REA	BFAT
152	51	14	-5	56	84	18	-3	12	11	12	0.51	-0.06	13	0.09	-0.02

Last chance at an Independence son today. If you haven't got one of these calving ease deluxe bulls like this one with his top 3% CED and 5% BW EPDs, you had better act now. The daughters out of this guy should be phenomenal with decreased inputs, increased fertility, great calving ease and tremendous longevity with his top 24%ME, 275 HPG, 1% CEM and 19% ST.

**100 LSF H2R CONQUEST D622**  
 BD: 2/20/16 TATTOO: D622 REG#: 3515903 HERD: H2R CAT: 100% AR

BKT JULIAN 7526 G  
 BECKTON JULIAN GG B571  
 BKT MARTA 9A13 JL

**HXC CONQUEST 4405P**  
 BFCK CHEROKEE CNYN 4912  
 HXC ELLIE MAY MA638  
 HXC 529E  
 LJC LANCER 806  
 BROWN COMMITMENT S7206  
 BROWN MS SHAZZAM P7940

**BROWN MS COMMITMENT X7537**  
 FEDDES BIG SKY R9  
 BROWN MS BIG SKY U7829  
 BROWN MS IN FOCUS S7549

ACT BW	86
SRANCH	Top 8%
WW	\$FEEDER
775	Top 12%
PROJ YW	DISP
1206	★★★

HERD	GRID	CED	BW	WW	YW	MILK	ME	HPG	CEM	STAY	MARB	YG	CW	REA	BFAT
135	54	9	-5.2	65	98	24	3	12	-2	13	1	-0.01	21	0.26	0.01

Here we are 100 lots deep and we are still offering you bulls with tremendous calving ease. If you have a group of heifers to breed you might want to jump on this guy with his top 16% CED and 4% BW. If you have a set of cows to breed, guess what? You guessed it, you can use same bull with his top 26% WW and 30% YW. Imagine the steers he can put out with top 1% MB, 24% REA and 1% GMI.

**101 LSF JFC LOCK N LOAD 602**  
 BD: 3/25/16 TATTOO: 602D REG#: 3581195 HERD: JFC CAT: 100% AR

BECKTON LANCER F442 T  
 BUF CRK LANCER R017  
 BUF CRK JULIET N036

**MUSHRUSH LOCK N LOAD**  
 BIEBER MAKE MIMI 7249  
 MUSHRUSH PRIMROSE R213  
 MUSHRUSH LANCER8032 N293  
 ARROWHEAD BRANDED BEEF L107

**DAMAR GABRIELLA X043**  
 RED BAYLOR A L C STRONG 116S  
 RED BRYLOR KARMA 12K  
 DFRA MELMON 534L  
 DFRA CHERABELLE S672  
 DFRA CHERABELLE N310

ACT BW	NA
SRANCH	NA
WW	\$FEEDER
610	NA
PROJ YW	DISP
1250	★★★

HERD	GRID	CED	BW	WW	YW	MILK	ME	HPG	CEM	STAY	MARB	YG	CW	REA	BFAT
106	49	5	0.3	66	99	21	1	15	3	11	0.41	0.03	29	0.08	-0.01

**102 LSF JKK CONQUISTADOR 6789D**  
 BD: 3/31/16 TATTOO: 6789D REG#: 3564632 HERD: JKK CAT: 100% AR

**TOP \$ ELIGIBLE**  
 HXC CONQUEST 4405P  
 LSF CONQUEROR 0026X  
 LSF DINA R5000 U8039

**LSF SRR CONQUISTADOR 3066A**  
 LSF JBOB EXPECTATION 6034S  
 LSF DINA S6120 W9024  
 LSF DINA N3044 S6120  
 HXC CONQUEST 4405P  
 SRR SUPER CONQUEST 03  
 SRR DORY JIBA 815-5036

**SRR JOAN 31-1141**  
 BASIN FUTURE DIRECTION 7303  
 SRR JOAN 1141  
 SRR JOAN 541-898

ACT BW	83
SRANCH	Top 6%
WW	\$FEEDER
714	Top 29%
PROJ YW	DISP
1242	★★★

HERD	GRID	CED	BW	WW	YW	MILK	ME	HPG	CEM	STAY	MARB	YG	CW	REA	BFAT
93	51	4	-0.1	79	131	26	3	12	3	9	0.57	0.3	48	0	0.06

If you market your animals by the pound you had better load this rascal up with his combination of an incredible 115 weaning weight ratio and growth EPDs in the top 3% WW and 1% YW. Stop leaving dollars behind with light carcasses, use his top 1% CW.



**LSF JFC LOCK N LOAD 602**

EPD Averages for Non-Parents Under Two Years of Age															
95 HB	49 GM	5 CED	-2.0 BW	59 WW	90 YW	21 MILK	1 ME	11 HPG	4 CEM	10 STAY	0.46 MARB	0.02 YG	22 CW	0.12 REA	0.00 BFAT

# LUDVIGSON STOCK FARMS • RED ANGUS YEARLING BULLS

## 103 LSF RHO HIGH CAPACITY 627

BD: 3/3/16 TATTOO: 627 REG#: 3523763 HERD: RHO CAT: 100% AR

**TOP \$ ELIGIBLE**

BJR HI HO 916  
BJR HIGH CAPACITY 008  
JRA JAMES 904

**UBAR HIGH CAPACITY 224**

LARSON RED LIGHTNING  
BJR BONNEBELL 7G  
RD BONNEBELL 5E  
RED COMPASS MULBERRY 449M  
RED FINE LINE MULBERRY 26P  
RED DUS FAYETTE 8G

**RED BRYLOR TINSEL 104Y**

RED BRYLOR STALLION 46M  
RED BCR TINSEL 4P  
RED PRIME TIME'S TINSEL 287

ACT BW	98
WW	676
PROJ YW	1271

\$PROFIT	Top 82%
\$RANCH	Top 66%
\$FEEDER	Top 81%
DISP	★

HERD	GRID	CED	BW	WW	YW	MILK	ME	HPG	CEM	STAY	MARB	YG	CW	REA	BFAT
80	47	0	2.1	73	110	8	0	16	5	8	-0.01	0.09	39	0.02	-0.01

Check out the performance that this guy brings to the table. With his growth EPDs that rank in the top 8% WW and 12% YW this guy can pay for himself in a hurry. You have to love the fertility that he can inject into your cow herd with his top 3% HPG.

## 104 LSF JKK TAKEOVER 6780D

BD: 3/4/16 TATTOO: 6780D REG#: 3564623 HERD: JKK CAT: 100% AR

**TOP \$ ELIGIBLE**

BECKTON JULIAN GG B571  
HXC CONQUEST 4405P  
HXC ELLIE MAY MA638

**LSF TAKEOVER 9943W**

MESSMER PACKER S008  
LSF WIDELOAD R5014 U8061  
LSF WIDELOAD N3195 R5014  
PAR ULTIMATE DIRECTION 1018R  
SRR RIGHT DIRECTION  
GMRA LAKOTA 027

**SRR IONE 371-0159**

BASIN EXT 7455  
SRR IONE 0159-533  
SRR IONE 533-131

ACT BW	85
WW	673
PROJ YW	1244

\$PROFIT	Top 18%
\$RANCH	Top 3%
\$FEEDER	Top 43%
DISP	★★★

HERD	GRID	CED	BW	WW	YW	MILK	ME	HPG	CEM	STAY	MARB	YG	CW	REA	BFAT
114	51	9	-2.7	66	106	25	4	8	8	10	0.47	0.06	29	0.25	0.02

If you like your bulls deep made, I believe that you are going to like this guy. Whether you need calving ease or high performance this guy has you covered with his EPDs in the top 18% CED, 26% BW, 24% WW and 17% YW. If you need REA check out his top 25% ranking.

## 105 LSF JKK TYSON 6776D

BD: 2/18/16 TATTOO: 6776D REG#: 3564619 HERD: JKK CAT: 100% AR

**TOP \$ ELIGIBLE**

BUF CRK LANCER R017  
MUSHRUSH IMPRESSIVE CA U236  
MUSHRUSH MADAM LT R265

**LSF SRR TYSON 3025A**

MESSMER PACKER S008  
LSF JIBA R5009 W9247  
LSF JIBA K1004 R5009  
BECKTON JULIAN GG B571  
HXC CONQUEST 4405P  
HXC ELLIE MAY MA638

**SRR ELIZABETH 339-707**

MESSMER JUDGE 36N  
SRR ELIZABETH 707-919  
LARSON ELIZBETH 919-189

ACT BW	72
WW	577
PROJ YW	1136

\$PROFIT	Top 26%
\$RANCH	Top 14%
\$FEEDER	Top 41%
DISP	★★★

HERD	GRID	CED	BW	WW	YW	MILK	ME	HPG	CEM	STAY	MARB	YG	CW	REA	BFAT
110	51	10	-4.1	67	109	23	5	11	4	9	0.3	-0.02	29	0.28	0

If you are looking to inject some loin into your steers this guy can do it with his top 22% REA. He'll make them pull the scales down as well with his top 25% CW. Check out his performance spread offering calving ease and growth with top 13% CED, 10% BW, 21% WW and 14% YW.



LSF JKK TYSON 6776D

## 106 LSF JKK TYSON 6779D

BD: 3/1/16 TATTOO: 6779D REG#: 3564622 HERD: JKK CAT: 100% AR

**TOP \$ ELIGIBLE**

BUF CRK LANCER R017  
MUSHRUSH IMPRESSIVE CA U236  
MUSHRUSH MADAM LT R265

**LSF SRR TYSON 3025A**

MESSMER PACKER S008  
LSF JIBA R5009 W9247  
LSF JIBA K1004 R5009  
TE MANIA ADA A149  
PARINGA IRON ORE E27  
STORTH OAKS LOWAN C1(TW)

**SRR LAKOTA 310-0175**

BASIN EXT 7455  
SRR LAKOTA 0175-701  
SRR LAKOTA 701-210

ACT BW	79
WW	594
PROJ YW	1256

\$PROFIT	Top 21%
\$RANCH	Top 17%
\$FEEDER	Top 32%
DISP	★★★

HERD	GRID	CED	BW	WW	YW	MILK	ME	HPG	CEM	STAY	MARB	YG	CW	REA	BFAT
97	51	6	-3.5	58	94	24	0	12	2	9	0.41	-0.01	21	0.29	0.02

If you are looking to put some downward pressure on the birth weight in your herd this guy can get it done for you with his top 16% BW EPD. He can increase the fertility in your herd as well with his HPG that ranks in the top 25% of the breed.



LSF JKK TYSON 6779D

EPD Averages for Non-Parents Under Two Years of Age															
95 HB	49 GM	5 CED	-2.0 BW	59 WW	90 YW	21 MILK	1 ME	11 HPG	4 CEM	10 STAY	0.46 MARB	0.02 YG	22 CW	0.12 REA	0.00 BFAT



LSF JKK CONQUISTADOR 6785D



**107** LSF JKK CONQUISTADOR 6785D  
 BD: 3/13/16 TATTOO: 6785D REG#: 3564628 HERD: JKK CAT: 100% AR

**TOP \$ ELIGIBLE**

HXC CONQUEST 4405P  
 LSF CONQUEROR 0026X  
 LSF DINA R5000 U8039  
 LSF SRR CONQUISTADOR 3066A  
 LSF JBOB EXPECTATION 6034S  
 LSF DINA S6120 W9024  
 LSF DINA N3044 S6120  
 BASIN EXT 5233  
 BASIN EXT 7455  
 BASIN CHINOOK 06P7  
 SRR SPEARA 348-U8105  
 HXC BIG DAWG 5515R  
 TJS SPERA U8105  
 LCC SPERA LA173

ACT BW	91	SPROFIT	Top 31%
WW	595	SRANCH	Top 35%
PROJ YW	1248	SFEEDER	Top 35%
		DISP	★★★★

HERD	GRID	CED	BW	WW	YW	MILK	ME	HPG	CEM	STAY	MARB	YG	CW	REA	BFAT
79	50	2	1.4	67	112	23	7	11	4	8	0.56	0.13	39	0.05	0.01

If you market your animals by the pound I hope that you are loading up on these high performance bulls like this one with his top 20% WW an 10% YW EPDs. With numbers like that he can pay for himself in a hurry. Check out that MB in the top 24%.

95 HB	49 GM	5 CED	-2.0 BW	59 WW	90 YW	EPD Averages for Non-Parents Under Two Years of Age				21 MILK	1 ME	11 HPG	4 CEM	10 STAY	0.46 MARB	0.02 YG	22 CW	0.12 REA	0.00 BFAT
-------	-------	-------	---------	-------	-------	---	--	--	--	---------	------	--------	-------	---------	-----------	---------	-------	----------	-----------

# LUDVIGSON STOCK FARMS • RED ANGUS YEARLING BULLS

**108 LSF AHR NEW DIRECTION 621D**  
 BD: 2/17/16 TATTOO: 621D REG#: 3536262 HERD: AHR CAT: 100% AR

MYTTY IN FOCUS  
 ANDRAS IN FOCUS B152  
 ANDRAS PINETA B91

**ANDRAS NEW DIRECTION R240**  
 MORGANS DIRECTION 111 9901  
 ANDRAS KURUBA B111  
 ANDRAS KURUBA B71  
 BECKTON JULIAN GG B571  
 HXC CONQUEST 4405P  
 HXC ELLIE MAY MA638

**AAHR TOOTSIE 1058Y 3007A**  
 5L TRADESMAN 1715-6237  
 HUSTON TOOTSIE 1058Y  
 MEADO-WEST TOOTSIE

ACT BW	87	\$PROFIT	Top 38%
WW	680	\$RANCH	Top 8%
PROJ YW	1121	\$FEEDER	Top 8%
		DISP	Top 63%
			★★★★

HERD	GRID	CED	BW	WW	YW	MILK	ME	HPG	CEM	STAY	MARB	YG	CW	REA	BFAT
83	52	8	-2.4	61	101	27	-1	12	6	6	0.76	0.13	27	0.02	0.03

Do you need a big boost in the carcass quality in your herd? If so, this guy can get it done with his MB EPD that ranks in the top 7% of the breed. Imagine the milky, low input and easy calving females he can produce with his top 9% MK, 34% ME, and 27% CEM.



LSF AHR NEW DIRECTION 621D

**109 LSF RHO BIG SKY 655**  
 BD: 2/18/16 TATTOO: 655 REG#: 3522549 HERD: RHO CAT: 100% AR

BJR MAKE MY DAY 981  
 BIEBER MAKE MIMI 7249  
 BIEBER SIRENA 6708

**FEDDES BIG SKY R9**  
 LCHMN GRANDCANYON 1244G  
 FEDDES LAKINA 310  
 FEDDES LAKINA 954  
 HSCC RED FOX 905W  
 HSCC COLLEGE FUND 14Y  
 RCRA BELLE 882

**HARMONYS DUCHESS 134**  
 RED LAZY MC HONKY TONK 11X  
 RED LAZY MC ECHO DUCHESS 13Z  
 RED MS BILTRITE PRIME RIB 24

ACT BW	67	\$PROFIT	Top 29%
WW	741	\$RANCH	Top 10%
PROJ YW	1136	\$FEEDER	Top 49%
		DISP	★★★

HERD	GRID	CED	BW	WW	YW	MILK	ME	HPG	CEM	STAY	MARB	YG	CW	REA	BFAT
88	50	7	-4.4	56	79	27	0	19	0	7	0.53	-0.01	11	0.03	0

Throw away those calf pullers! With his super low 60 pound actual birth weight and 78 ratio combined with his calving ease EPDs in the top 31% CED and 9% BW next calving season should be a breeze. Check out the fertility he offers with his top 1% HPG.

**110 LSF AHR SPARTACUS 624D**  
 BD: 2/26/16 TATTOO: 624D REG#: 3536270 HERD: AHR CAT: 100% AR

LCC CHEYENNE B221L  
 BIEBER ROUSE SAMURAI X22  
 GHR MARITA R31

**BIEBER SPARTACUS A193**  
 LCOC HIGH NOON A093R  
 BIEBER TILLY 233U  
 BIEBER TILLY 7334  
 VGW KING OF THE WEST  
 5L NORSEMAN KING 2291  
 NORSEMAN 1312 PJM

**UNFORGETTABLE COPPER QUEEN**  
 FORSTER BLAZE 6129  
 SRN COPPER QUEEN M308  
 FORSTER COPPRQUEEN 7166

ACT BW	76	\$PROFIT	Top 78%
WW	646	\$RANCH	Top 53%
PROJ YW	1201	\$FEEDER	Top 80%
		DISP	★★★★

HERD	GRID	CED	BW	WW	YW	MILK	ME	HPG	CEM	STAY	MARB	YG	CW	REA	BFAT
78	51	6	-2.5	63	96	23	6	10	1	8	0.6	0.02	23	0.25	0.02

If you need end product merit for your cow herd this guy can do it with his carcass EPDs that rank in the top 19% MB, and 25% REA. He also offers a superb spread between low birth and high growth with EPDs in the top 30% BW, 33% WW and 35% YW.

**111 LSF DDC LEGEND 68D**  
 BD: 1/25/16 TATTOO: 68D REG#: 3539347 HERD: DDC CAT: 100% AR

BECKTON EPIC R397 K  
 LSF SAGA 1040Y  
 LSF MINOLA T7172 W9041

**LSF SRR LEGEND 3110A**  
 MESSMER PACKER S008  
 LSF CRYSTAL LA394 Y1401  
 LSF CRYSTAL G1382 LA394  
 5L NORSEMAN KING 2291  
 5L HOTLINE 708-6093  
 XXX MATTIE 708 HM

**D&D ROBIN X07**  
 LMAN ROBIN HOOD 1174B  
 LSF ROBIN HOOD H1365  
 PARK MISS WIDELOAD E530

ACT BW	80	\$PROFIT	Top 66%
WW	516	\$RANCH	Top 55%
PROJ YW	1028	\$FEEDER	Top 66%
		DISP	★★★★

HERD	GRID	CED	BW	WW	YW	MILK	ME	HPG	CEM	STAY	MARB	YG	CW	REA	BFAT
104	50	7	-3	49	81	18	4	12	7	9	0.51	-0.01	14	0.29	0.03

Take this stud back home to help make next calving season go a lot smoother with his calving ease EPDs that rank in the top 30% CED and 21% BW. You might want to keep as many daughters as possible with his top 31% HPG and 17% CEM EPDs.



LSF AHR SPARTACUS 624D

EPD Averages for Non-Parents Under Two Years of Age															
95 HB	49 GM	5 CED	-2.0 BW	59 WW	90 YW	21 MILK	1 ME	11 HPG	4 CEM	10 STAY	0.46 MARB	0.02 YG	22 CW	0.12 REA	0.00 BFAT

# LUDVIGSON STOCK FARMS • RED ANGUS YEARLING BULLS

## 112 LSF SRR TAKEOVER 6127D

BD: 1/30/16 TATTOO: 6127D REG#: 3532584 HERD: SRR CAT: 100% AR

BECKTON JULIAN GG B571  
HXC CONQUEST 4405P  
HXC ELLIE MAY MA638

### LSF TAKEOVER 9943W

MESSMER PACKER S008  
LSF WIDELOAD R5014 U8061  
LSF WIDELOAD N3195 R5014  
BECKTON NEBULA M045  
BECKTON NEBULA P P707  
BECKTON LANA M809 EP

### BROWN MS P707 Y7786

GLACIER LOGAN 210  
BROWN MS ABIGRAE L7730  
LCHMN ABIGAIL E1013

ACT BW	77
WW	613
PROJ YW	1006
\$PROFIT	Top 9%
\$BRANCH	Top 4%
\$FEEDER	Top 25%
DISP	***

HERD	GRID	CED	BW	WW	YW	MILK	ME	HPG	CEM	STAY	MARB	YG	CW	REA	BFAT
183	54	14	-6.9	48	76	25	3	13	8	16	1.17	0.09	5	0.11	0.06

HEIFER BULL ALERT! HERD BULL ALERT! See, I told you that we have herd bulls all throughout this sale. You can throw away your calf pullers with this guys top 1% ranking for both CED and BW. Imagine the females and steers with his top 23% HPG, 6% CEM, 2% ST, 1% MB, 2% GMI and 1% HBI.

## 113 LSF H2R CONQUEST D628

BD: 3/11/16 TATTOO: D628 REG#: 3523976 HERD: H2R CAT: 100% AR

BKT JULIAN 7526 G  
BECKTON JULIAN GG B571  
BKT MARTA 9A13 JL

### HXC CONQUEST 4405P

BFCK CHEROKEE CNYN 4912  
HXC ELLIE MAY MA638  
HXC 529E  
LJC LANCER 806  
BROWN COMMITMENT S7206  
BROWN MS SHAZZAM P7940

### BROWN MS COMMITMENT X7537

FEDES BIG SKY R9  
BROWN MS BIG SKY U7829  
BROWN MS IN FOCUS S7549

ACT BW	83
WW	747
PROJ YW	1181
\$PROFIT	Top 5%
\$BRANCH	Top 7%
\$FEEDER	Top 13%
DISP	***

HERD	GRID	CED	BW	WW	YW	MILK	ME	HPG	CEM	STAY	MARB	YG	CW	REA	BFAT
123	53	10	-5.3	69	101	23	3	12	-2	12	0.94	0.03	22	0.22	0.02

WOW! Check out the superb performance spread on this guy. Here is a bull that you can truly breed to the entire herd. He offers first calf heifer calving ease with top 13% CED and 4% BW combined with mature cow herd growth with top 16% WW and 24% YW. Also notice the top 2% MB.

## 114 LSF JFC REDEMPTION 654

BD: 2/14/16 TATTOO: 654 REG#: 3534540 HERD: JFC CAT: 100% AR

### TOP \$ ELIGIBLE

BECKTON NEBULA M045  
BECKTON NEBULA P P707  
BECKTON LANA M809 EP

### BROWN JYJ REDEMPTION Y1334

LJC MISSION STATEMENT P27  
JYJ MS JOLENE W16  
HXC JOLENE R548  
LIT CITADEL 812  
TROTTERS STRONGHOLD 156  
LJT PEARL 579

### JFCC SCARLET 466

NSFR LOGAN H99  
RED ACRES MILLIE 7M  
BNOR VICTORIA 710

ACT BW	88
WW	722
PROJ YW	1085
\$PROFIT	Top 20%
\$BRANCH	Top 34%
\$FEEDER	Top 21%
DISP	***

HERD	GRID	CED	BW	WW	YW	MILK	ME	HPG	CEM	STAY	MARB	YG	CW	REA	BFAT
135	51	6	0.4	74	120	20	-1	9	7	13	0.59	0.09	42	0.09	0

Last chance at a Redemption son today and this is one of the higher performance sons that you are going to find. With his top 7% WW and 4% YW he can pay for himself in a hurry. You might want to keep every daughter with his top 14% CEM and 10% ST.

## 115 LSF H2R PREMIER D623

BD: 2/20/16 TATTOO: D623 REG#: 3515904 HERD: H2R CAT: 100% AR

BECKTON NEBULA M045  
BECKTON NEBULA P P707  
BECKTON LANA M809 EP

### BROWN PREMIER X7876

5L DESTINATION 893-6215  
BROWN MS DESTINATION T7664  
BROWN MS JULIA M7788  
LJC LANCER 806  
BROWN COMMITMENT S7206  
BROWN MS SHAZZAM P7940

### BROWN MS COMMITMENT X7537

FEDES BIG SKY R9  
BROWN MS BIG SKY U7829  
BROWN MS IN FOCUS S7549

ACT BW	66
WW	720
PROJ YW	1028
\$PROFIT	Top 1%
\$BRANCH	Top 1%
\$FEEDER	Top 2%
DISP	***

HERD	GRID	CED	BW	WW	YW	MILK	ME	HPG	CEM	STAY	MARB	YG	CW	REA	BFAT
143	54	6	-5	64	95	12	2	14	1	14	1.01	-0.08	19	0.12	-0.03

Check out that BW EPD! With his top 5% ranking you can throw away those calf pullers with this guy. Even with his calving ease he still offers mature cow herd type growth with his top 30% WW EPD. Imagine the females and steers with his top 12% HPG, 7% ST, 16% YG and 1% MB.



LSF JKK HARMONY 6783D

## 116 LSF JKK HARMONY 6783D

BD: 3/11/16 TATTOO: 6783D REG#: 3564626 HERD: JKK CAT: 100% AR

MESSMER PACKER S008  
LSF YIELD GRADE 0066X  
LSF RED FAY N3087 T7066

### LSF HARMONY 2020Z

LCB JEWEL MAKER N155  
LSF MATTIE F1274 U8238  
LEACHMAN MATTIE F1274  
K2 INDEPENDENCE ALLI 807 57  
K2 RED ALLIANCE 1602 73  
ZCC SAGEBRUSH LADY 0602

### SRR DORY JIBA 367-8019

LCHMN NO EQUAL 1174D  
SRR DORY JIBA 8019-784  
LARSON DORYJIBA 784-834

ACT BW	75
WW	616
PROJ YW	1174
\$PROFIT	Top 20%
\$BRANCH	Top 6%
\$FEEDER	Top 42%
DISP	**

HERD	GRID	CED	BW	WW	YW	MILK	ME	HPG	CEM	STAY	MARB	YG	CW	REA	BFAT
97	51	6	-1.4	67	96	18	3	11	3	9	0.96	0.02	24	0.38	0.03

If you want to put out a set of grid topping steers you had better load this guys up. He blows apart the antagonisms between marbling and muscle with his top 2% MB and 12% REA. He'll put the pounds in them as well with his top 21% WW and 35% YW.

#### EPD Averages for Non-Parents Under Two Years of Age

95 HB 49 GM 5 CED -2.0 BW 59 WW 90 YW 21 MILK 1 ME 11 HPG 4 CEM 10 STAY 0.46 MARB 0.02 YG 22 CW 0.12 REA 0.00 BFAT

# LUDVIGSON STOCK FARMS • RED ANGUS YEARLING BULLS

**117 LSF DDC CONQUEST 616D**  
 BD: 1/17/16 TATTOO: 616D REG#: 3539311 HERD: DDC CAT: 100% AR

BKT JULIAN 7526 G  
 BECKTON JULIAN GG B571  
 BKT MARTA 9A13 JL

**HXC CONQUEST 4405P**  
 BFCK CHEROKEE CNYN 4912  
 HXC ELLIE MAY MA638  
 HXC 529E  
 B C EMBLAZON 854E 8023  
 D&D BRANDISH 213Z  
 D&D MEGAN 29M

**D&D MISS TIMES B421**  
 5L NORSEMAN KING 2291  
 D&D MISS TIMES Y111  
 D&D MISS TIMES U87

ACT BW	77
WW	727
PROJ YW	1176

\$PROFIT	Top 33%
\$RANCH	Top 8%
\$FEEDER	Top 57%
DISP	****

HERD	GRID	CED	BW	WW	YW	MILK	ME	HPG	CEM	STAY	MARB	YG	CW	REA	BFAT
110	52	13	-5	59	99	25	-1	9	-1	10	0.6	0.13	22	0.17	0.05

Check out the length of spine on this guy, he is as long as a rope! If you want to put some stretch into your next calf crop this guy can do it. This outcross bull also offers tremendous calving ease with his super low 93 birth weight ratio and calving ease EPDs in the top 4% CED and 5% BW.

**118 LSF DDC NEW STANDARD 617D**  
 BD: 2/18/16 TATTOO: 617D REG#: 3539337 HERD: DDC CAT: 100% AR

**TOP \$ ELIGIBLE**

BON VIEW NEW DESIGN 1407  
 LCC NEW STANDARD  
 LC SUNSET K3118

**RAB NEW STANDARD 181A**  
 GAR-EGL PROTEGE  
 RAB MS PROTEGE 656W  
 RAB MS PROTEGE 656W  
 LCB HOSS A444N  
 PIE GRIDMASTER 589  
 PIE KRUGGER KANYON 353

**RRSO SARAH BELLA 4909**  
 LCC NEW CHAPTER A705L  
 LSF SARAH K1281 N3141  
 LCC SARAH K1281

ACT BW	84
WW	659
PROJ YW	1273

\$PROFIT	NA
\$RANCH	NA
\$FEEDER	NA
DISP	***

HERD	GRID	CED	BW	WW	YW	MILK	ME	HPG	CEM	STAY	MARB	YG	CW	REA	BFAT
117	54	5	-0.8	79	129	20	-4	10	5	10	0.98	-0.06	45	0.81	0.02

You want to talk about a bull that is stacked for carcass merit, this guy has it. Check out his superb carcass EPDs in the top 2% MB, 23% YG, 2% CW and 1% REA as well as top 1% GMI. Some of the highest value Red Angus right now are out of Black Angus parentage, now is your chance.

**119 LSF JKK TYSON 6758D**  
 BD: 1/27/16 TATTOO: 6758D REG#: 3564588 HERD: JKK CAT: 100% AR

BUF CRK LANCER R017  
 MUSHRUSH IMPRESSIVE CA U236  
 MUSHRUSH MADAM LT R265

**LSF SRR TYSON 3025A**  
 MESSMER PACKER S008  
 LSF JIBA R5009 W9247  
 LSF JIBA K1004 R5009  
 BASIN EXT 5233  
 BASIN EXT 7455  
 BASIN CHINOOK 06P7

**SRR ALLISON 379-842**  
 BUF CRK HOB0 1961  
 SRR ALLISON 842-332  
 SRR ALLISON 332-7116

ACT BW	76
WW	561
PROJ YW	1129

\$PROFIT	Top 51%
\$RANCH	Top 28%
\$FEEDER	Top 62%
DISP	***

HERD	GRID	CED	BW	WW	YW	MILK	ME	HPG	CEM	STAY	MARB	YG	CW	REA	BFAT
109	50	7	-3.2	58	93	25	6	13	3	10	0.38	0	21	0.2	0.01

We are almost to the finish line and your chances on getting a bull are starting to run out. If you need calving ease this guy has it with his top 30% CED and 19% BW EPDs. He brings in tremendous fertility and maternal as well with his top 15% MK and 20% HPG.



LSF JKK TYSON 6758D

**120 LSF JKK PREMIER 6771D**  
 BD: 2/10/16 TATTOO: 6771D REG#: 3564614 HERD: JKK CAT: 100% AR

BECKTON NEBULA M045  
 BECKTON NEBULA P 707  
 BECKTON LANA M809 EP

**BROWN PREMIER X7876**  
 5L DESTINATION 893-6215  
 BROWN MS DESTINATION T7664  
 BROWN MS JULIA M7788  
 RED SIX MILE SAKIC 832S  
 SRR SAKIC 965  
 DIAMOND BLACKCAP 709J

**SRR IONE 327-806**  
 BASIN HOB0 0545  
 SRR IONE 806-6019  
 SRR IONE6019-308

ACT BW	77
WW	624
PROJ YW	1159

\$PROFIT	Top 7%
\$RANCH	Top 12%
\$FEEDER	Top 11%
DISP	***

HERD	GRID	CED	BW	WW	YW	MILK	ME	HPG	CEM	STAY	MARB	YG	CW	REA	BFAT
143	52	7	-3.8	65	100	15	0	13	9	12	0.66	0.02	24	0.08	0

Last chance to buy a bull today. What an EPD spread with top 32% CED, 13% BW, 27% WW, 27% YW, 24% HPG, 3% CEM, 16% ST and 13% MB.

THANK YOU FOR YOUR INTEREST IN AND SUPPORT OF OUR PROGRAM. WE DO THIS FOR YOU AND COULD NOT DO IT WITHOUT YOU. HAVE SAFE TRAVELS BACK HOME. THANK YOU ONCE AGAIN FROM THE LUDVIGSONS, THEIR COOPERATORS AND THEIR EMPLOYEES.



LSF JKK PREMIER 6771D

EPD Averages for Non-Parents Under Two Years of Age															
95 HB	49 GM	5 CED	-2.0 BW	59 WW	90 YW	21 MILK	1 ME	11 HPG	4 CEM	10 STAY	0.46 MARB	0.02 YG	22 CW	0.12 REA	0.00 BFAT

# Top Dollar Angus- Feeder Program



Top Dollar Angus is a genetic certification and marketing company focused exclusively on the top 25% of the industry in carcass & growth, Angus or Red Angus influenced feeder cattle. Top Dollar Angus is a program similar to other popular branded beef programs, except that Top Dollar Angus does its "branding" in the feeder cattle and calf market.

Qualified herds must have two or more generations of Angus (Black or Red) genetics with growth and carcass traits objectively ranking in the top 25% of the breed based on documented historical sire use. DNA evaluation, conducted by Zoetis or GeneSeek, is another workable method to qualify. Once your cattle have met the necessary requirements, they will be marketed under the Top Dollar Angus brand and logo and will be promoted aggressively to a large number of feedyards and buyers. In today's market, Top Dollar Angus cattle are seeing premiums ranging from \$30-\$70 per head above the average market.

Why the premium? Cattle feeders know that Top Dollar Angus cattle perform better and have higher grid-based carcass rewards compared to other cattle. This puts more dollars per head into the cattle feeder's pocket, which can be passed back to

Kenny Stauffer - GM  
[kenny@topdollarangus.com](mailto:kenny@topdollarangus.com)  
308-641-0429  
[www.topdollarangus.com](http://www.topdollarangus.com)



the producer in the form of premiums paid above market price.

Top Dollar Angus helps take the guess work and surprises out of growing and feeding cattle. Feedyards are tired of unpredictable performance and wide ranging profitability results from group to group on cattle they purchase. Cattle often look the same and have the same colored hides, but are very different genetically. That's why the genetic certification of high-end Angus/Red Angus feeder cattle is here! The industry must differentiate the best Angus/Red Angus genetics from average cattle, that's what Top Dollar Angus will do for you!

If you have consistently invested in high-performance Angus/Red Angus genetics, Top Dollar Angus will make your cattle stand out from the pack and get you the premiums you deserve. No matter how you market your cattle our goal is to create more demand and higher prices for your calves.



# • Terms & Conditions •

The Red Angus Association Terms and Conditions will apply if the terms and conditions printed here are not applicable.

**TERMS:** Terms of the sale are check or cash. Every animal will be sold to the highest bidder. The right of property shall not pass until after complete settlement is made. All settlements will be made with the clerks of the sale immediately following the conclusion of the sale and before any cattle will be released from the sale facility or ranch.

**BIDDING DISPUTES:** The auctioneer will settle any disputes as to bids, and his decision on such matters shall be final.

**RETAINED INTEREST:** We are retaining a 1/2 interest in all bulls in the catalog. We are selling the remaining interest, full possession, and full salvage value on these bulls. We also retain a breeding interest for in-herd use only in all other bulls in the catalog. We reserve the right to collect semen at the convenience of the buyer.

**SEMEN RIGHTS:** Buyers receive semen rights proportional to the interest purchased. If you purchase a 1/2 interest then you are entitled to 1/2 of the semen collections at cost provided that you indicate you want semen prior to collection. We intend to collect some of the bulls in the sale and sample them in our herd. We will cooperate with the buyer in collection of the bull. We prefer to collect most bulls after the first season of use and we will contact the buyer when we intend to collect the bull at a time convenient for the buyer.

**PURCHASER'S RISK:** Each animal becomes the risk of the purchaser as soon as sold. Animals will be fed, watered and cared for at the purchaser's risk until March 30, 2017. After that, there will be a per day feed cost added to the purchase price, payable before possession occurs.

**ANNOUNCEMENTS:** Changes of information contained in this catalog relating to the animals offered for the sale will be announced from the auction box and such announcements shall take precedence. Errors discovered in the catalog will be corrected by announcements at sale time and such corrections will take precedence over the printed matter in this catalog.

**BREEDER'S GUARANTEE:** All animals sold are guaranteed breeders by the sellers. Any animal that has not proven itself as a breeder within six months after date of sale, if in healthy condition, may be returned to seller at buyer's expense. The seller reserves the privilege of trying, for a period of six months, to prove the animal is a breeder. The seller, at his option, may either replace the animal with another of equal value or grant the buyer a credit for use on any cattle marketed by the seller in full settlement and transaction of ALL claims. Yearling bulls shall be guaranteed breeders for no more than 25 females. All complaints regarding breeding difficulties must be reported in writing by the buyer to the seller within the specified time above, and any animal returned must be free from disease and in good

health and condition. All animals are guaranteed to be breeders, with the exception of: a) calves under twelve months of age; or b) animals shown by Purchaser after sale (in case of animals shown after purchase the breeding guarantee, if any, shall be such as agreed upon between Seller and Buyer; or c) gross negligence or willful misconduct on the part of the Purchaser.

## **OPTIONS AND PRIVILEGES OF RETURN OR ADJUSTMENT:**

1. All claims for adjustment or refund must be made in writing either within six month of the sale date or no later than six months after the animal reaches 18 months of age with the exception of claims involving defects or parentage.
2. If a female sold as "open" proves to be with calf, the Purchaser may return the animal to the ranch of the Seller prior to calving for a credit of the full purchase price or for another animal of equal value, whichever is acceptable to the Purchaser. It shall be the obligation of the Seller to bear any expense incurred for transportation.

**FERTILITY:** All bulls have been evaluated and are guaranteed to be breeders.

**LIABILITY:** Neither owners, sale managers, clerks nor anyone connected with the sale assumes responsibility, legal, or otherwise, for damages of any kind. Any person attending the sale does so at his own risk.

**CONTRACT:** The above terms and conditions shall constitute a contract between the buyer and seller of each animal sold.

**IDENTIFICATION:** Each animal carries a readable tattoo. The tag numbers on the cattle correspond with lot and tattoo numbers in this catalog.

**CERTIFICATE OF REGISTRY:** A certificate of registry and transfer will be provided on all bulls sold. Heifers selling for \$900 or above will receive a registry certificate. If buyers of heifers under \$900 desire a registration certificate, they can be purchased for \$100 added to the selling price.

**IMPLIED WARRANTY:** Except for those stated in the terms and conditions, there are no warranties, wither expressed or implied, as to merchantability or fitness for a particular purpose with respect to the cattle being sold in this auction. The warranties set fort in terms and conditions are in lieu of all other warranties, either expressed or implied and the remedies proved therein shall be the sole and exclusive remedy of the buyer, or any part claiming through buyer, for any breach of warranty or guarantee therein provided and all other obligations or liabilities.

**HEALTH:** All cattle will have official health certificates and are guaranteed for interstate delivery.

**LUDVIGSON STOCK FARMS**  
**Green Springs Bull Sale Center**  
24327 E Old Town Rd.  
Nevada, MO 64772

FIRST-CLASS PRSRT  
U.S. POSTAGE

**PAID**

Permit No.116  
Joplin, MO

## Time Dated Material



**We look forward to seeing you on  
March 4th and if we can be of any  
assistance prior please contact us.**

